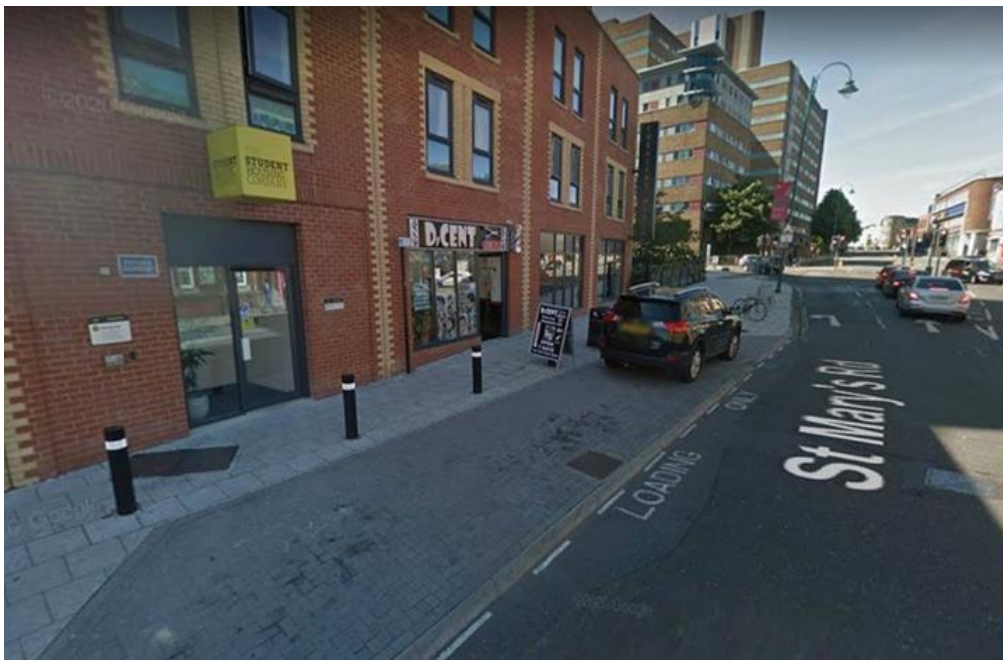


TAXI BAY – ST. MARYS ROAD, SOUTHAMPTON

Highways have been working on a package of measures on St Marys Road which will deliver junction improvements, bus stop access improvements as well as better walking and cycle access. As part of the design we have had to relocate the taxi bay from outside Orion Point student accommodation to Crescent Place student accommodation. The bay is the same size as existing with the same loading / taxi restrictions so there shouldn't be any noticeable impact on taxi operation here. It has been advertised on a TRO and no comments from the taxi trade have been received.

Given lower traffic flows currently and that southern water are due to be working in the area we are hoping to commence work in late July. This will have an impact on accessibility in the area, but Balfour Beatty will be sharing that detail shortly.

The intention is to move the rank to the layby as shown below with the appropriate restrictions as shown on the plates.



Phil Bates
Licensing Manager