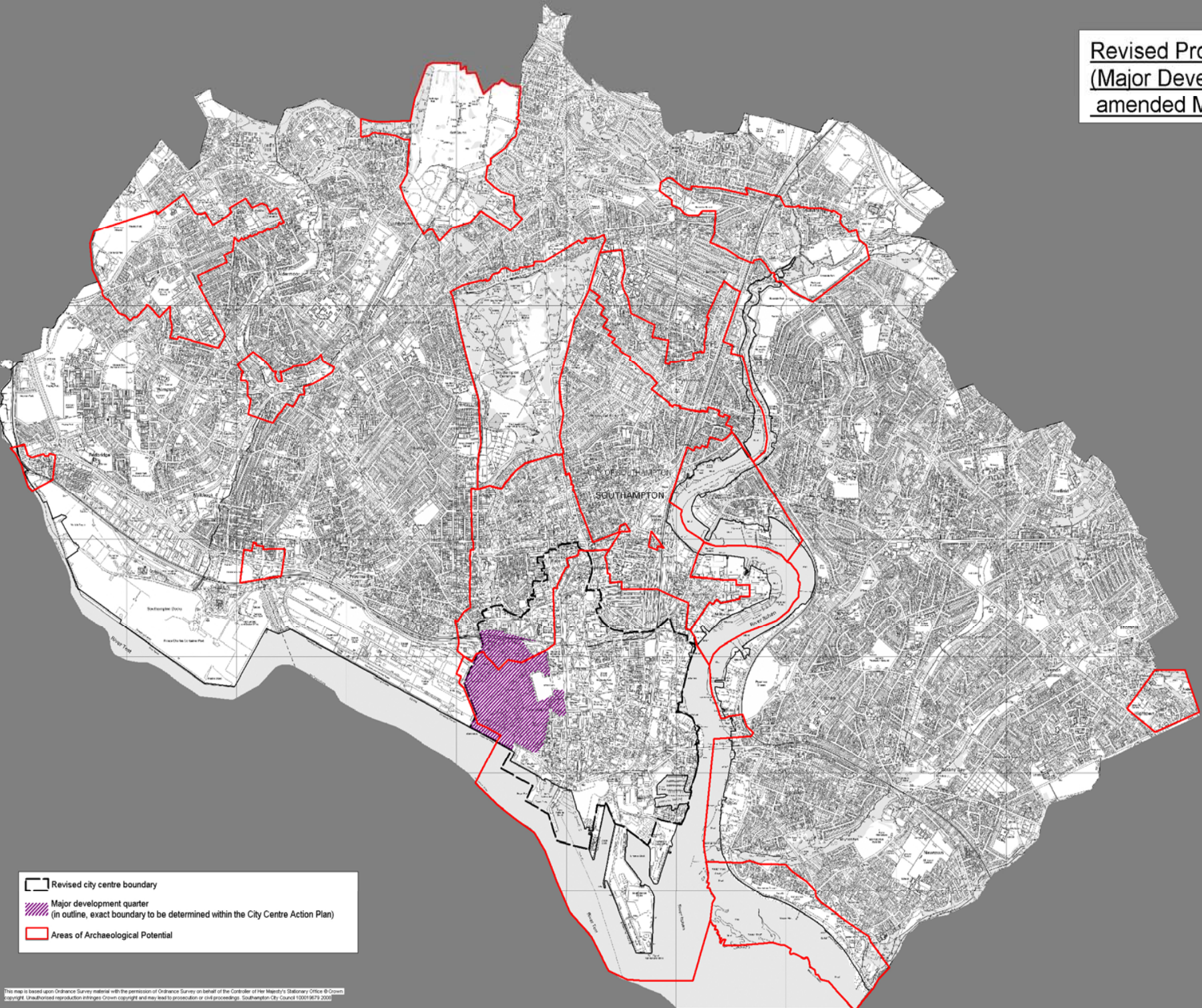





Revised Proposals Map
(Major Development Quarter
amended March 2009)



-  Revised city centre boundary
-  Major development quarter
(in outline, exact boundary to be determined within the City Centre Action Plan)
-  Areas of Archaeological Potential

This map is based upon Ordnance Survey material with the permission of Ordnance Survey on behalf of the Controller of Her Majesty's Stationary Office © Crown copyright. Unauthorised reproduction infringes Crown copyright and may lead to prosecution or civil proceedings. Southampton City Council 100019673 2009

