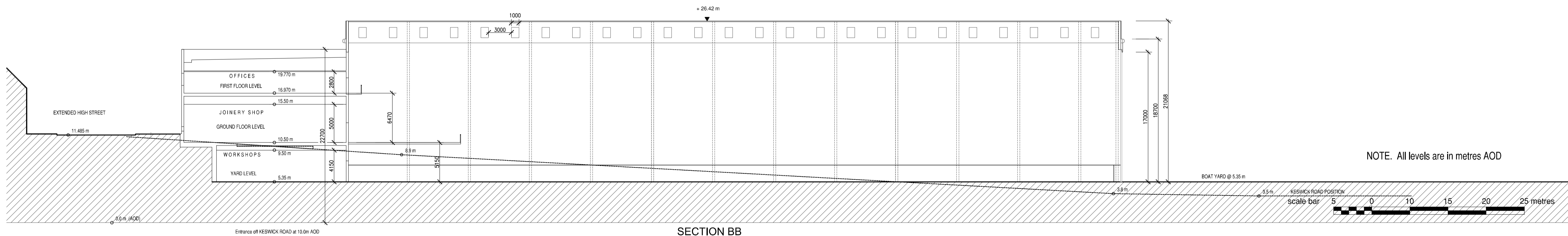


NORTH ELEVATION



SECTION BB

PLANNING APPLICATION

P4	Planning Application submission	TG 07.04.08	DAS 07.04.08
P3	Main entrance & storage lean-to revisions / title changes	TG 13.03.08	DAS 13.03.08
P2	Changes to ridge heights / dimensioned plan added	TG 05.03.08	ACF 05.03.08
P1	Original Issue	TG 22.02.08	ACF 22.02.08
Rev		QA	Dwn / Date
			Southampton
			Winch

This drawing is copyright and must not be disclosed to third parties without permission. Scaled dimensions are not to be used for construction.

EXTERNAL BUILDING MATERIALS

Walls

- 1 Kingspan (KS1000RW) Insulated Trapezoidal Wall Panel. (silver RAL 9006)
Single length laid vertically - vertical trapezoidal profile every 333mm
- 2 Kingspan (KS1000EB) Insulated Flat (Stucco) Wall Panel. (silver RAL 9006)
Single length laid vertically - vertical joint profile every 1000mm
- 3 M.R. Switherm - external wall insulation and render system 2.5mm Silkolitt Standard White render finish on 50mm mineral wool insulation board
- 4 Brickwork plinth in blue semi-engineering brick
- 5 Large bay door assemblies to be clad externally with Kingspan (KS1000EB) Insulated Flat (Stucco) Wall Panel. (silver RAL 9006)
Single length laid vertically - vertical joint profile every 1000mm

Note that whilst the colour selected is called silver, the finish is more of a light grey and NOT metallic silver.

Roof

- 6 Pitched roofs at 6 degrees.
Single ply membrane (grey) laid over Kingspan insulated flat panel
(Note with intermediate insulated polycarbonate roof lights)
- 7 Flat roof over offices (pitch lower than 6 degrees)
Single ply membrane (grey) laid over insulation and cast in situ concrete floor
- 8 Bailey roof eaves system. Rounded profile projects by 500mm and contains within it a deep rainwater gutter

Windows, Doors, Balconies & Handrails

- 9 Powder coated aluminium finish (charcoal grey RAL 7016)

PROJECT
CENTENARY QUAY, WOOLSTON

CLIENT
SEEDA

DRAWING TITLE
**BOAT FIT-OUT
Proposed North Elevation & Section BB**

PROJECT NO. 08006 DRAWING NO. 302 REV. P4 SCALE 1:250 @A1

TS Design Group