

All setting out must be checked on site
 All levels must be checked on site and refer to Ordnance Datum Newlyn unless alternative Datum given
 All fixings and weathers must be checked on site
 All dimensions must be checked on site
 This drawing must not be scaled
 This drawing must be read in conjunction with the relevant specification clauses
 This drawing must not be used for land transfer purposes
 This drawing must not be used on site unless issued for construction
 Revision Status:
 P= Preliminary/Planning T= Tender C= Construction
 © 2003 Assael Architecture Limited

DRAWING NOTES

Subject to survey and consultation with the Local Authority planning department
 Scheme Subject to Structural Design

ELECTRONIC FILE REF N° A1654 311-F3
 STATUS REVISION DATE DRN CHECK CDM

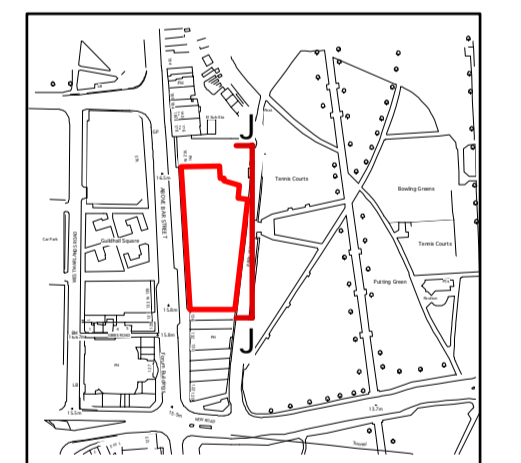
P1	PRELIMINARY ISSUE	17.10.06	PHD	--	--
P2	Contract Issue	18.12.06	PHD	PSD	--
P3	PLANNING SUBMISSION	03.10.07	NK	NK	--

- Fifteenth Floor
- Fourteenth Floor
- Thirteenth Floor
- Twelfth Floor
- Eleventh Floor
- Tenth Floor
- Ninth Floor
- Eighth Floor
- Seventh Floor
- Sixth Floor
- Fifth Floor
- Fourth Floor
- Third Floor
- Second Floor
- Service Floor
- First Floor FFL 21.40
- Ground Floor FFL 16.60
- Basement Floor

Key

- Transparent Glass
- Translucent Glass
- Opaque Glass

Key



CLIENT
City Loft Developments

PROJECT TITLE
Northern Above Bar Phase 1, Southampton

DRAWING TITLE
Long Elevation JJ

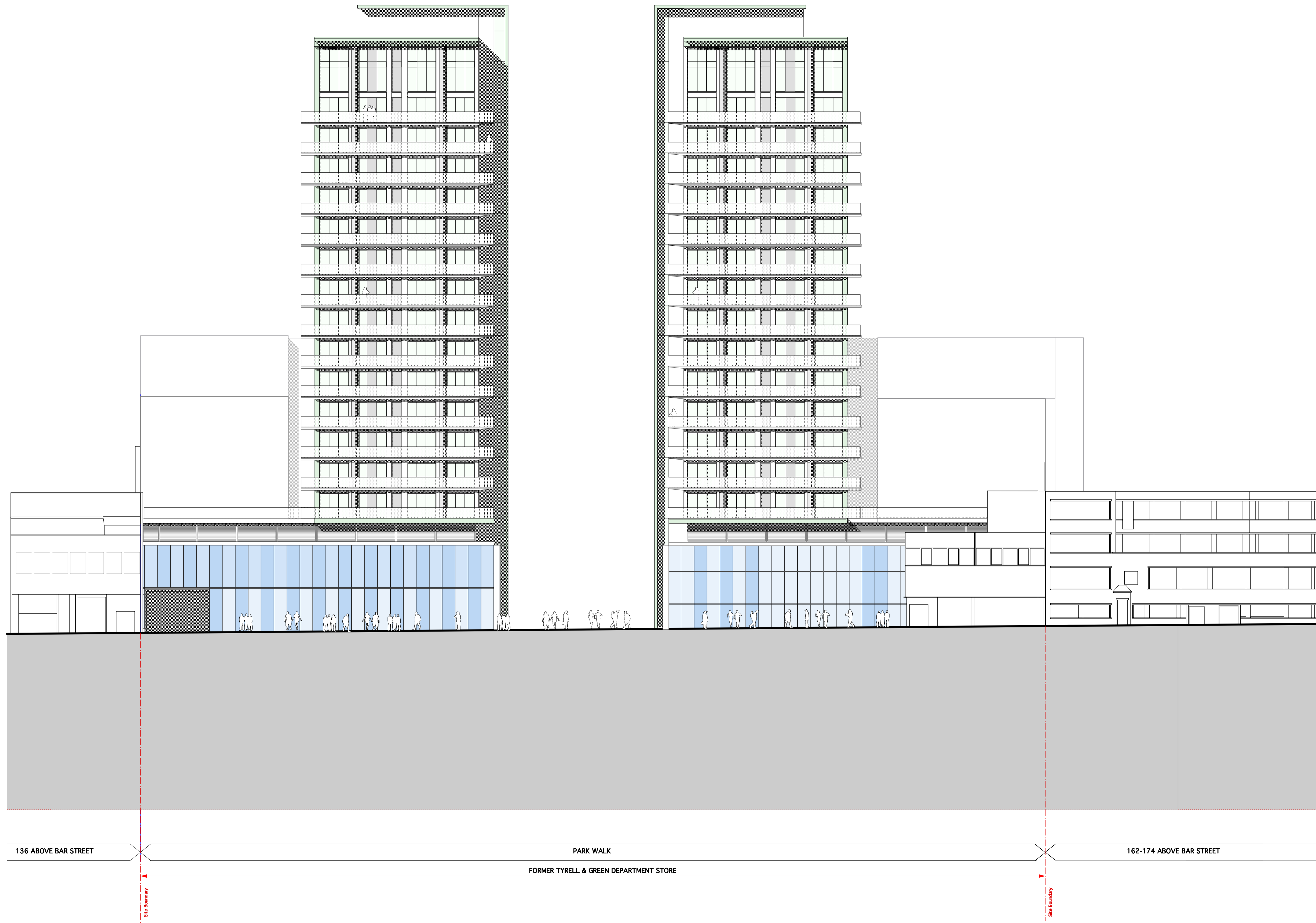
SCALE @ A1 SIZE DATE
1:200 May '03

DRAWING N° STATUS & REVISION
A1654 311 P4

Assael

Assael Architecture Limited
 Studio 13
 50 Carnwath Road
 London SW6 3EG

T +44 (0) 20 7736 7744
 F +44 (0) 20 7736 6677
 E surname@assael.co.uk
 W www.assael.co.uk



136 ABOVE BAR STREET

PARK WALK

162-174 ABOVE BAR STREET

FORMER TYRELL & GREEN DEPARTMENT STORE

Site Boundary

Site Boundary