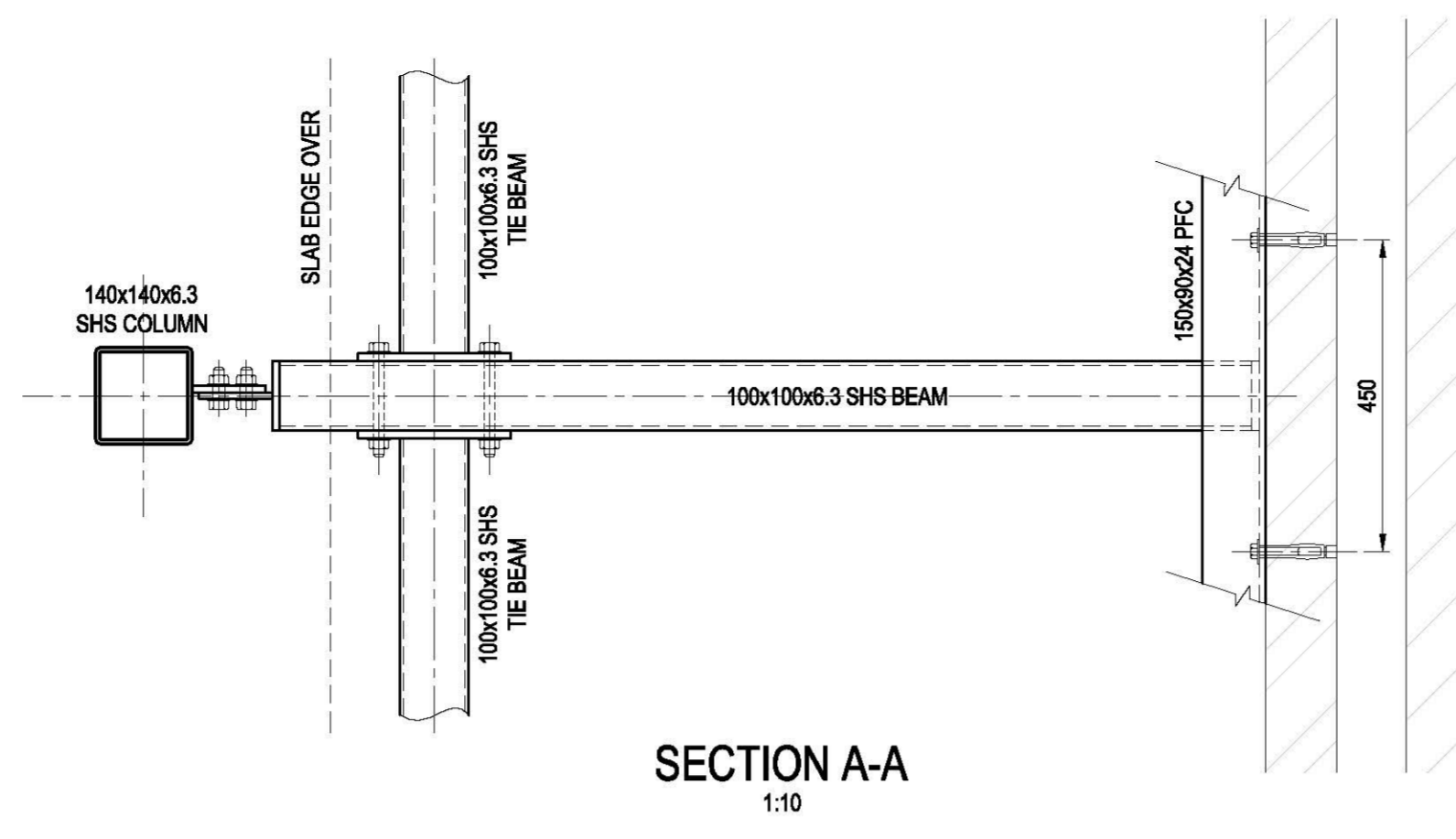
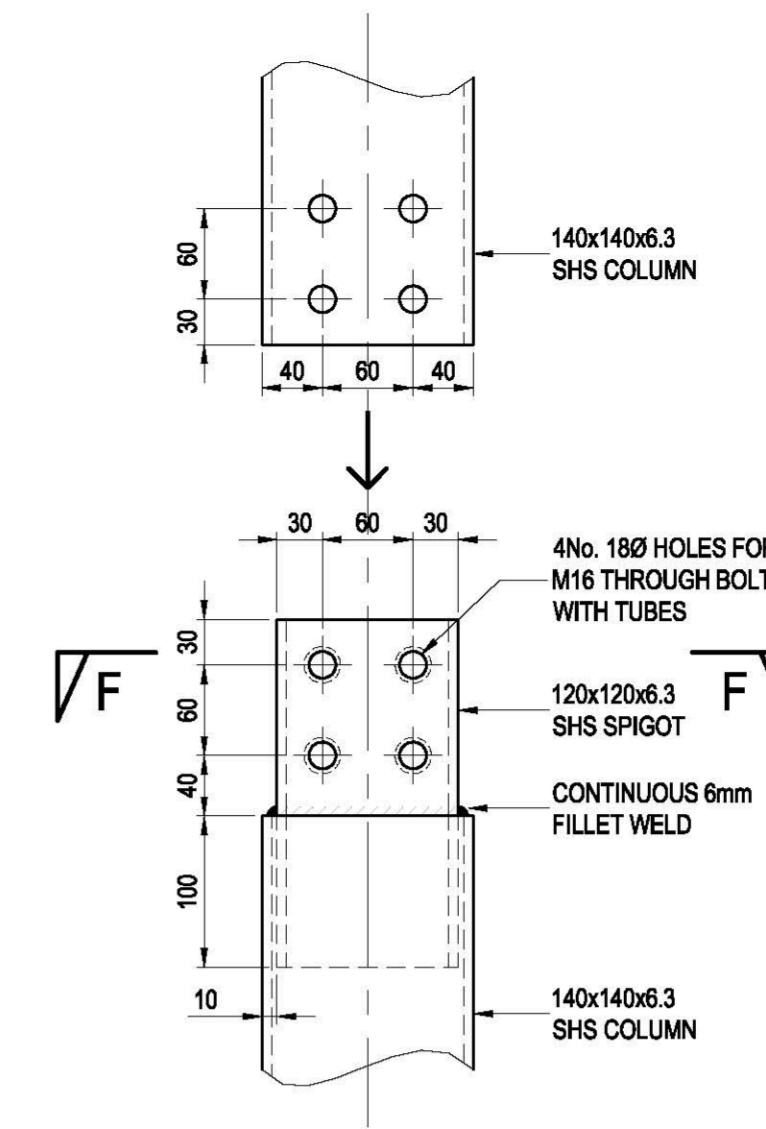


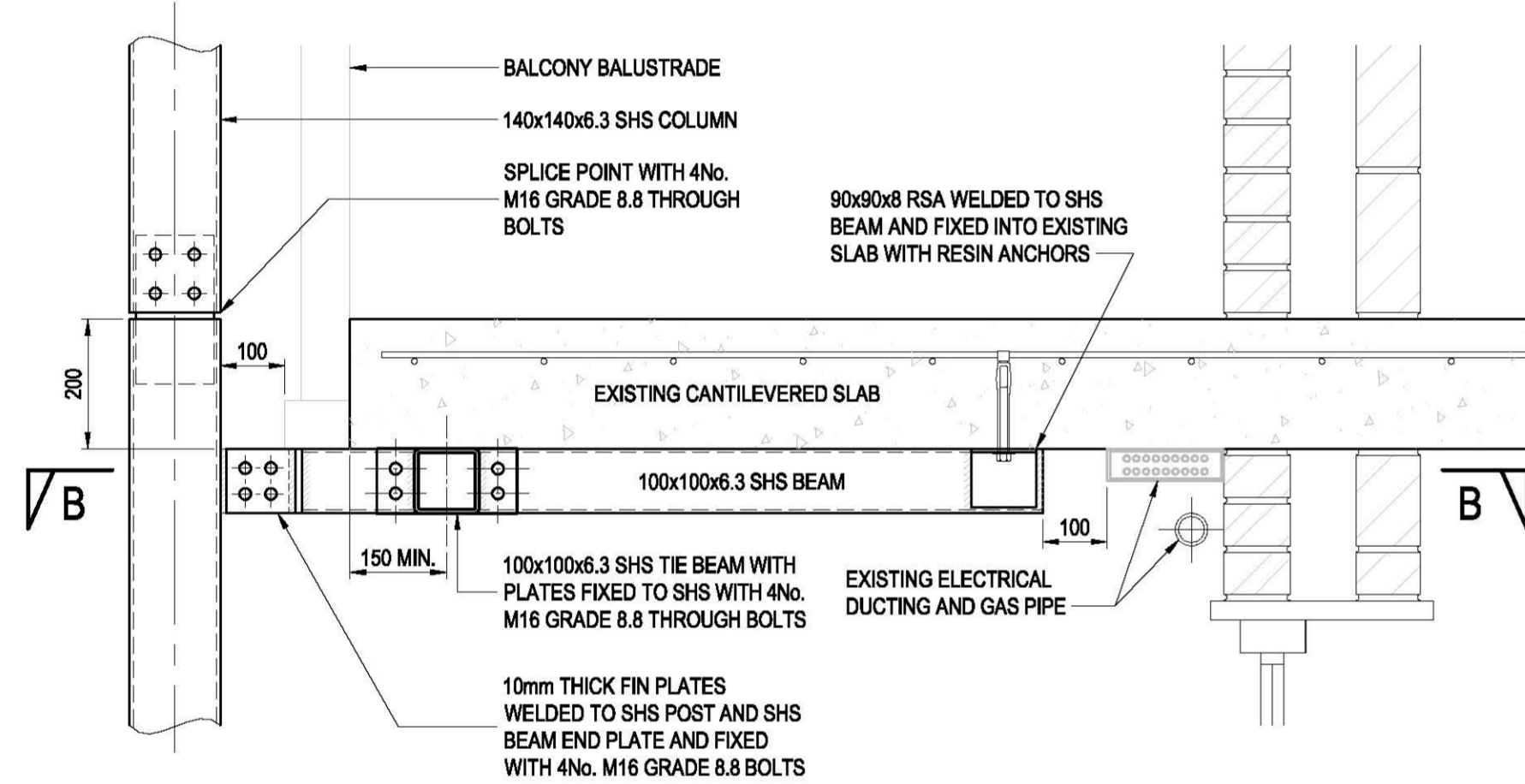
TYPICAL SECTION AT ROOF LEVEL
1:10



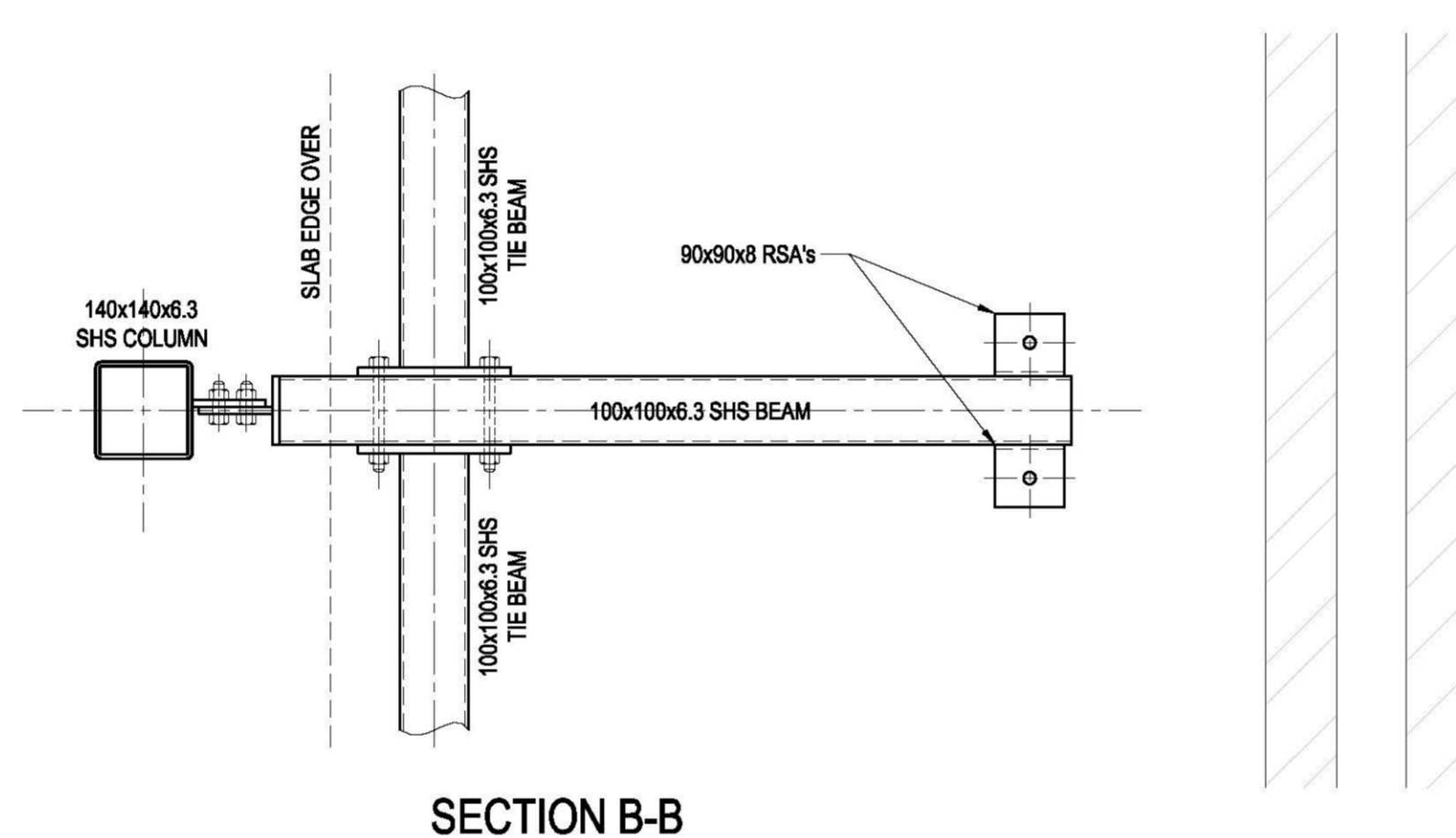
SECTION A-A
1:10



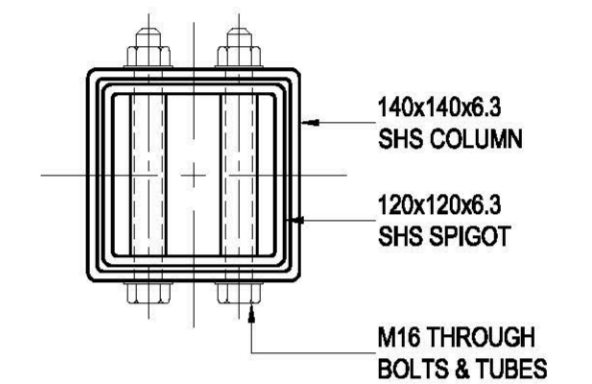
SPIGOT DETAIL
1:5



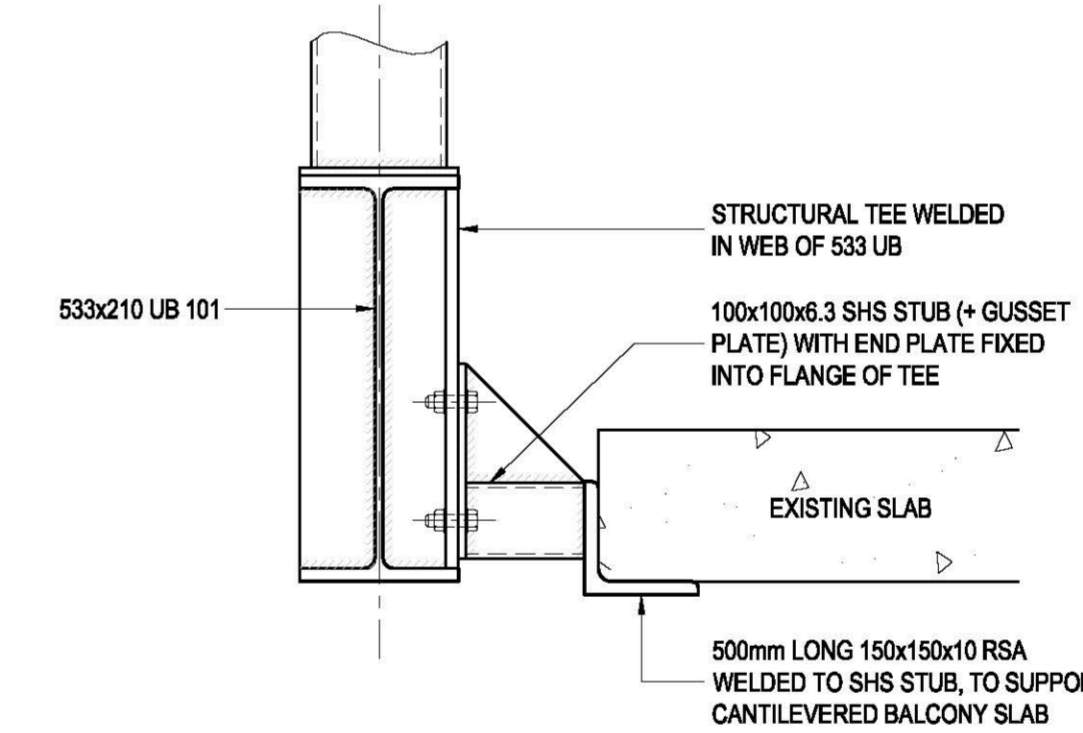
TYPICAL BALCONY SUPPORT SECTION
1:10



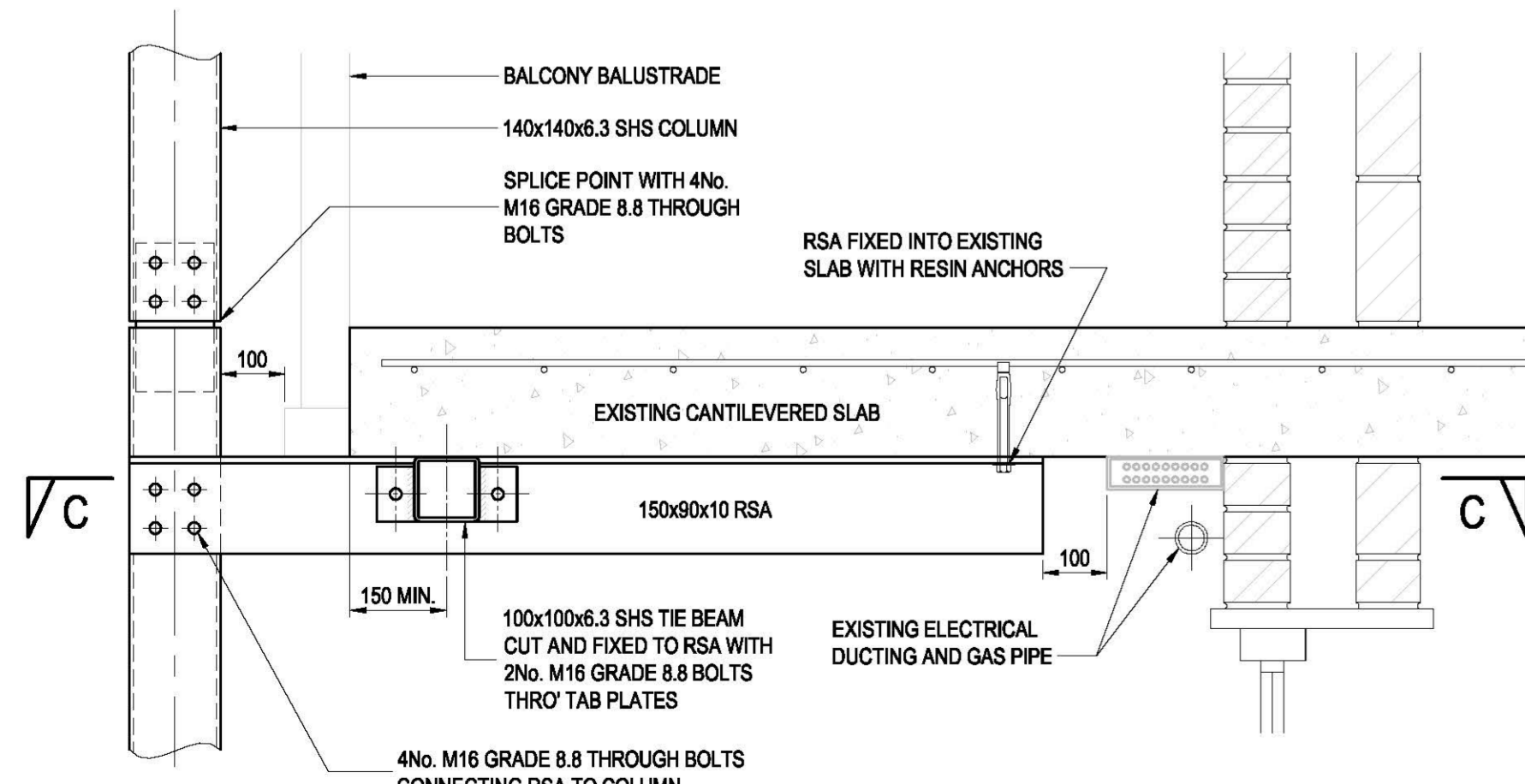
SECTION B-B
1:10



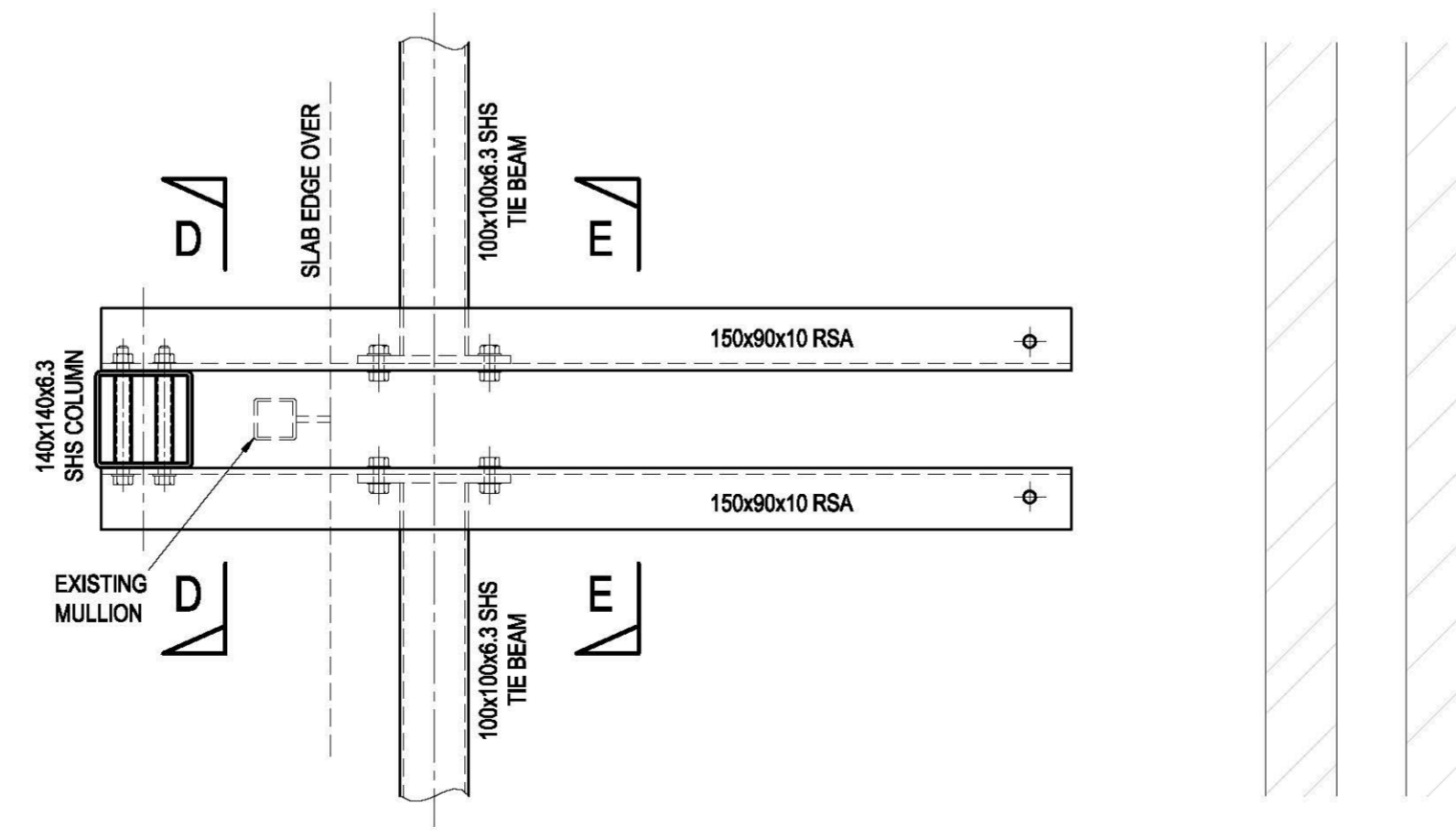
SECTION F-F
1:5



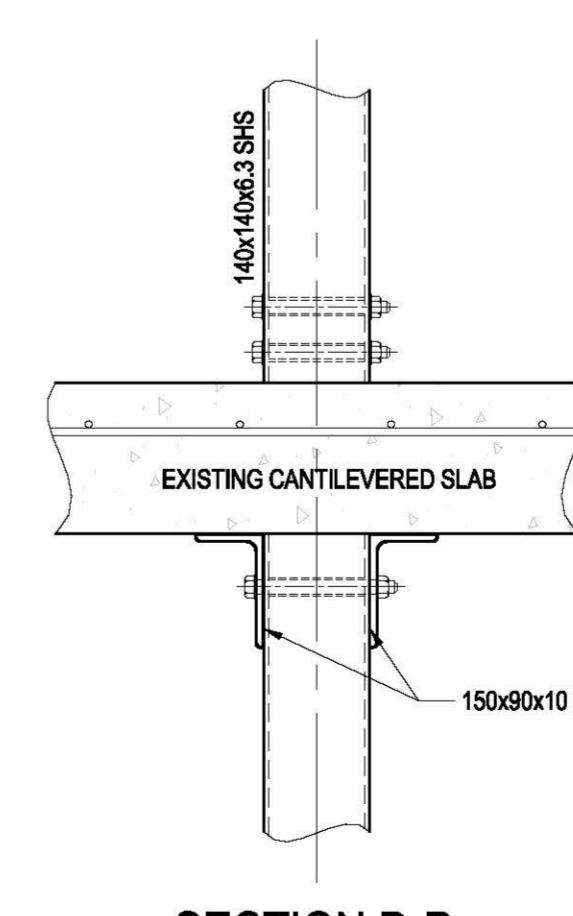
TYPICAL SECTION THROUGH 'SHOP AREA' ON TYPE 4 (3 No. PER BLOCK)
1:10



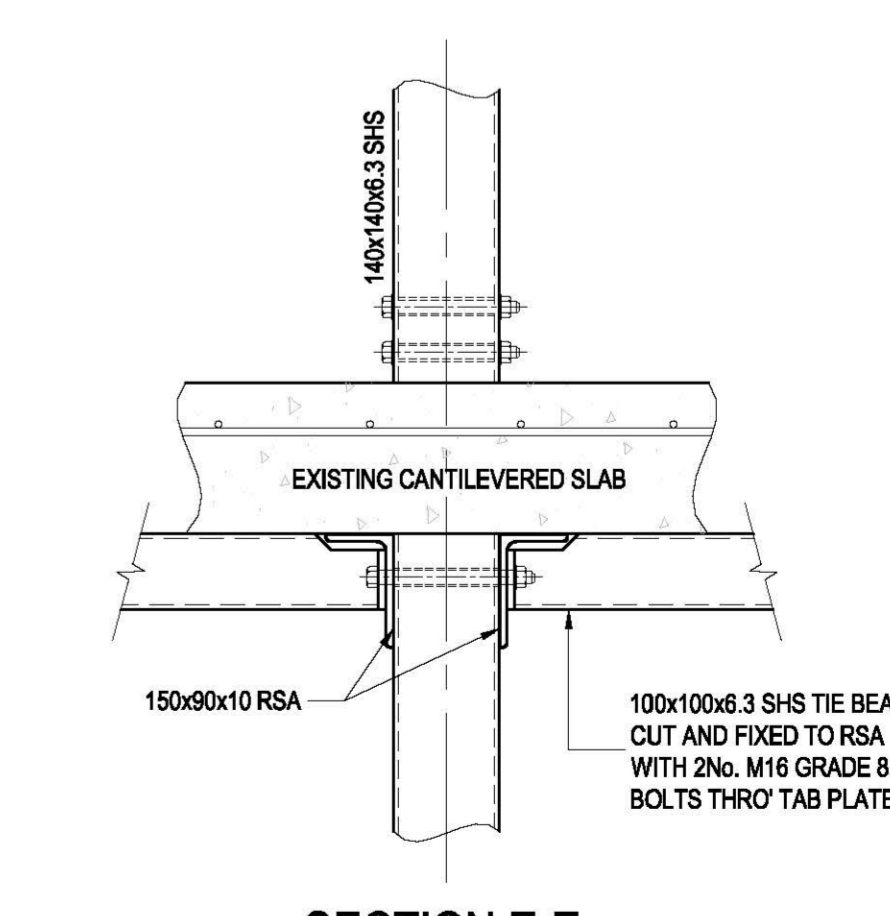
TYPICAL BALCONY SUPPORT SECTION
(TO AVOID GLAZING MULLIONS)
1:10



SECTION C-C
1:10



SECTION D-D
1:10



SECTION E-E
1:10

NOTES:

- DO NOT SCALE FROM THIS DRAWING.
- REFER TO DRAWING S-3000 FOR GENERAL NOTES.
- THE CONTRACTOR SHALL CHECK ALL DIMENSIONS ON SITE PRIOR TO FABRICATION.
- ALL CONNECTIONS ARE TO BE MIN. 6mm FILLET WELDS UNLESS NOTED OTHERWISE.
- ALL STEELWORK CONNECTION BOLTS TO BE M16 BOLTS GRADE 8.8 UNLESS NOTED OTHERWISE.
- SIZES OF ALL STEELWORK INDICATIVE AND ARE SUBJECT TO CHANGE ON ALL DETAILED DESIGN, FOR CONSTRUCTION ISSUE.
- FOR GALVANISING, POWDER COATING AND STEEL GRADES REFER TO GENERAL NOTES DRAWING: S-3000.
- PILES ARE TO BE DESIGNED BY THE CONTRACTOR. PILES ARE DESIGNED TO HAVE A WORKING LOAD OF 75kN COMPRESSION, 25kN TENSION, 10kN SHEAR.
- WHERE PILES WILL HAVE TO BE MOVED TO AVOID EXISTING SERVICES, THE CONTRACTOR IS TO BRING THIS TO THE ATTENTION OF SOUTHAMPTON CITY COUNCIL STRUCTURES DEPARTMENT, WHO RESERVE THE RIGHT TO REVIEW AND REVISE THE DESIGN AND REINFORCEMENT.
- EXPOSED CONCRETE TO BE FAIR FACED. TOP CORNERS TO HAVE 20mm CHAMFER.
- CONCRETE GRADE TO BE MINIMUM C35.
- ALL REINFORCEMENT TO HAVE 50mm COVER TO ALL STEELWORK.
- FOR REINFORCEMENT INFORMATION, PLEASE REFER TO DRAWING S-3001.
- THERE ARE 42 ELEVATIONS IN TOTAL. EACH 'TYPE' DRAWING SHOWS A TYPICAL SOLUTION. THERE MAY BE VARIATIONS IN BLOCK HEIGHT AND OVERALL LENGTH, RESULTING IN MORE OR LESS STEELWORK/FOUNDATIONS REQUIRED, DEPENDING ON EACH INDIVIDUAL CASE.
- THE TENDERER NEEDS TO CROSS REFERENCE 'TYPE' DRAWINGS WITH BLOCK LOCATION MAP AND LOCATION PLANS (REFER TO BLOCK LOCATION MAP S-3001 AND LOCATION PLANS S-3002, S-3003 & S-3004).
- TYPE 7, AS SHOWN ON THE LOCATION PLAN IS TO BE DRAWN. (PLEASE NOTE, THIS WILL BE SIMILAR TO A TYPE 1 BLOCK, WITH ADDITIONAL COLUMNS AT EACH STAGGERED RETURN/CORNER).
- THE CONTRACTOR IS TO UNDERTAKE THEIR OWN SURVEYS FOR THE PRODUCTION OF THEIR OWN FABRICATION DRAWINGS.
- SCC TO REVIEW AND COMMENT PRIOR TO COMMENCEMENT OF FABRICATION.
- FOR SPECIFICATION REFER TO NBS, DESIGNERS RISK ASSESSMENT AND SCOPE OF WORKS AND ADDITIONAL SPECIFICATIONS.

T1	24.02.17	TENDER ISSUE	AF	CT	DH
Rev	Date	Amendments	By	Chk	Aprv

Drawing Status:

TENDER

Client:



Project Title:

**CANTILEVER BALCONY
SUPPORT - LOT 3
MEDIUM RISE**

Drawing Title:

**TYPICAL DETAILS
SHEET 2**

Project No.:	Drawing No.:	Rev.:
RP200058	S-3902	T1
Date:	Scale:	
JAN '17	AS SHOWN @ A1	
By:	Checked:	Approved:
AF	CT	DH
UPR Number: .		