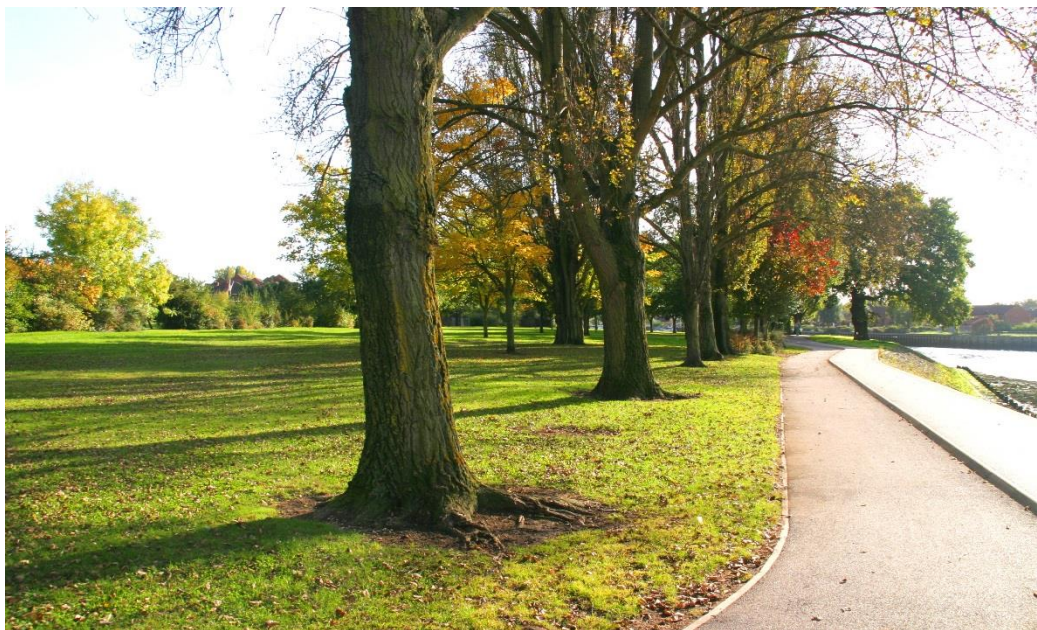

Riverside Park Management Plan 2021 - 2026

Produced by Southampton City Council - City Services
and key Riverside Park Stakeholders

Updated January 2024



Contents

1	Vision.....	4
2	Introduction.....	4
3	A Welcoming Place.....	6
4	Healthy, Safe and Secure.....	9
5	Clean and Well Maintained.....	11
6	Environmental Management.....	14
7	Conservation and Heritage.....	16
8	Community Involvement.....	21
9	Marketing.....	24
10	Management.....	25
11	Actions and Recommendations.....	28
	Appendix 1 – Staff Structure.....	34
	Appendix 2 – Sample Risk Assessment.....	35
	Appendix 3 – Key Stakeholders.....	41
	Appendix 4 - Map of Riverside Park.....	42
	Appendix 5 - Biodiversity Maintenance Map of Riverside Park.....	43
	Appendix 6 - Biodiversity Management Statement.....	44



In Memory of Nigel Fullbrook

Nigel sadly lost his life to Covid-19 on 1st May 2020

This section is to commemorate the fantastic work that Nigel carried out in St James Park and Riverside Park.

Nigel was always keen to get involved and work with the Friends of Riverside Park to help them continually improve their area. He attended planting days and loved working with the families who came planting new trees, shrubs and bulbs.

In St. James Park he worked closely with the friends of St James Park, in particular the Gardening Club where he attended their regular Wednesday work afternoons in the park, he worked alongside the Gardening Club offering advice as well as helping out along with other members of the west district team and always came prepared with a smile.

Nigel was one of the main points of contact between the Friends of St James Park and the City Council and he was a liked, loved and respected member of the team. Nigel was always upbeat and willing to help and encourage anybody where and when he could.

1 Vision

For Riverside Park to offer an inviting, attractive and interesting District Park. With the local community at its heart, working with the City Services team to continually improve recreation, biodiversity, events and involvement to ensure the park continues to be clean, safe and accessible for all.

2 Introduction

2.1 Management Plan

- 2.1.1 The purpose of this management plan is to set out a framework to guide the development of Riverside Park for the future, ensuring that it meets the needs of the whole community, in line with a number of council policies. It should be considered as a “live”, workable document that sets out the terms to be applied over the next five years, including an action plan which is subject to annual review and goal setting. This plan has been set out to cover 2021-2026 and will be reviewed over the coming year as part of a wider review of all of our Green Flag Parks’ management plans.
- 2.1.2 The management plan has been put together by staff working in the park, Friends of Riverside Park (FORP), the Bitterne Park Residents Association (BPRA), The Itchen Navigation Heritage Trail Project, The Hampshire and Isle of Wight Wildlife Trust, Woodmill Activity Centre, and involvement from other community stakeholders.
- 2.1.3 Southampton City Services Division have adopted the Green Flag Award standard as the best way to manage the parks. This management plan is therefore written following the criteria set down by the green flag governing body. It has been split into nine sections, the eight green flag criteria and a ninth actions and recommendations section. This helps those who are reading and interpreting the plan to understand how the management of the park fits into the criteria.
- 2.1.4 This plan will inform the future running of Riverside Park, combining City Council policy and legal requirements and the views of those who live, work and enjoy the area.

2.2 Aims

- 2.2.1 Riverside Park serves a wide range of functions for the local community and draws people in from further afield to use its facilities. It is a vital component to improving access to the natural environment along the city banks of the River Itchen. The overall character of the park should be recognised and enhanced whilst maintaining and improving the individual components that make it unique. There are four broad aims for the management, in partnership, of Riverside Park identified in accordance with the Green Space Strategy and other key city plans;

- Retain and enhance the distinctive quality of the park
- Provide a park that meets and continues to meet user need, both locally and strategically through the objectives of the City Council
- Interpret and promote the park to ensure the benefits it offers are maximised
- Ensure the park is accessible to all elements of the community.

2.3 Specific Objectives for 2021/22

2.3.1 The following key objectives have been derived from the Green Space Strategy, the draft City Services business plan and customer feedback provides a focus for management in 2021/22. Specific actions to address these objectives are identified in the action plan in section 9.2.

- Increase community involvement in the management and maintenance of the park by continuing to work closely with FORP and BPRA
- To maintain and improve the unique character of Riverside Park and enhance and interpret the varied biodiversity.
- To increase customer satisfaction in Riverside Park.
- To provide and promote key events in the park, raising environmental awareness and increasing community involvement.



The District team planting trees with volunteers.

3 A Welcoming Place

3.1 Description of Riverside Park

3.1.1 Riverside Park is a 32 hectare site in the Bitterne Park area, on the east side of Southampton. The park runs alongside the River Itchen from Cobden Bridge to Mansbridge. The River Itchen is a Site of Special Scientific Interest (SSSI) therefore Riverside Park is a key location for people to view the varied wildlife in the area. The whole river, including its three headwater tributaries, was confirmed as a SSSI in 1997 for its Chalk stream habitat, and communities of plants, invertebrates, fish, birds and mammals. Figure 1 below shows an aerial view of Riverside Park. Appendix 1 shows a map of Riverside Park and its key features which is displayed in the new signage within the park.

3.1.2 A cycle path runs through the majority of the park along the river edge, this is part of the National Cycle Network route 23.

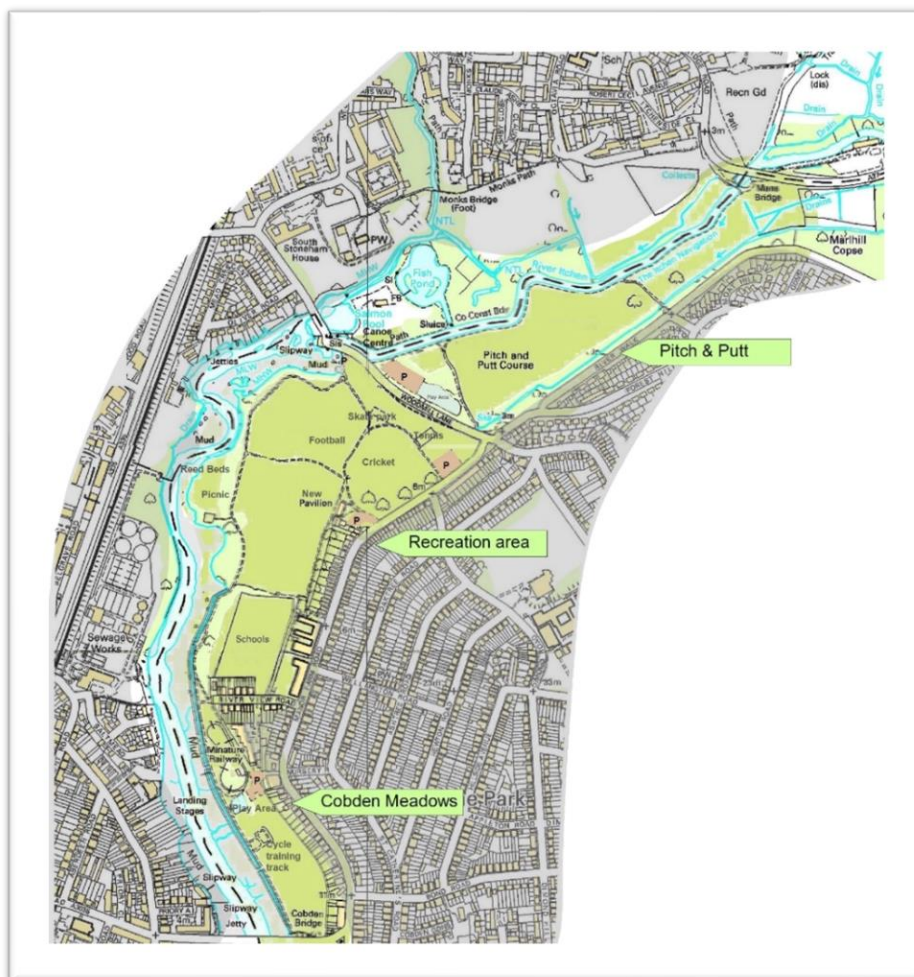
3.1.3 Riverside Park is also part of the Itchen Way, a 30 mile footpath following the River Itchen from its source, via Winchester and several villages, through the Itchen Navigation and ending at the Itchen toll bridge in Southampton.



3.1.4 For ease of description the park can be viewed as three areas each with distinct characteristics, however the park is managed as one entity.

3.2 Cobden Meadows

3.2.1 Cobden Meadows refers to the area of the park nearest Cobden Bridge, up to the River View Road entrance. This is the oldest and southernmost part of the park and some local people still refer to the area as Cobden Meadows, separate to the rest of Riverside Park. As well as a large area of grassed open space, this area contains a play area, cycle training area, the popular Miniature Model Railway and a car park. There is also a pontoon allowing public access to the River Itchen.





The view of Cobden Meadows from Cobden Bridge

3.3 Recreation area – established in 1963

3.3.1 The recreation part of the park contains three football pitches and two cricket pitches. These are very popular and hired by local leagues for matches, making use of the pavilion with changing rooms. There is a car park adjacent to the building which has been recently named the Perry Pavilion. The area also includes a tennis court which is available for anyone to use free of charge, skate park, Multi used games area, play area, second and third car parks and the park's operational depot. The multi-use games area near the skate park was built in 2018 *using a grant for which FORP bid from Veolia Environmental Trust together with match funding from the Council.* It has proven to be a very well used facility.

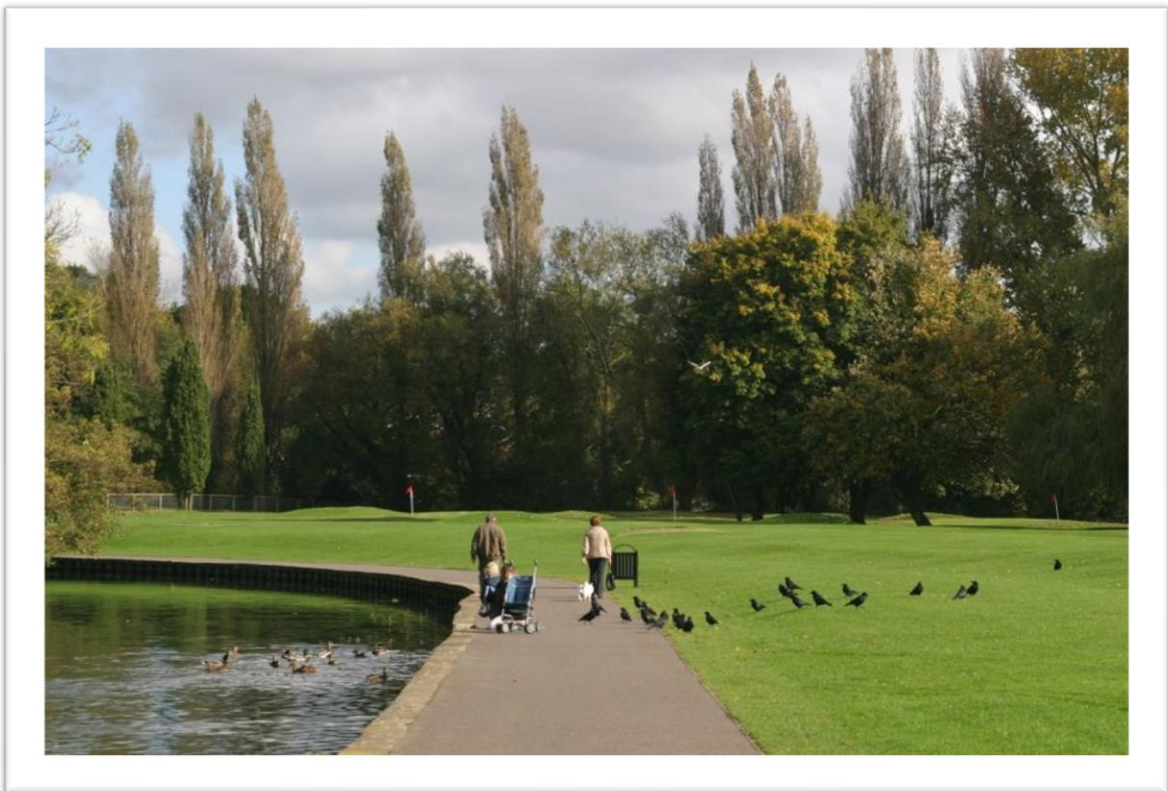
3.4 Former Pitch and Putt area

3.4.1 The boundary between the recreation part of the park and the former pitch and putt area is Woodmill Lane. This is a busy route to cross the river by a narrow bridge and does form a barrier to people using both sides of the park. The new traffic lights that were installed on the Woodmill Bridge in early 2020 has made crossing this road much safer for pedestrians.

3.4.2 Given the financial issue that all Local Authorities are going through we have had to assess which services and at what level we can still sustainably provide to the public. Unfortunately this has meant taking the very difficult decision to remove any subsidy to the pitch and putt course. The course itself was subsidised to the sum of circa £15,000

and at the time of removing the subsidy it was agreed to find a partner to take on the running of the course to ensure it continues to run in the future. A partner was found but after one year of running the facility also found it too financially draining to continue to provide the service. The pitch and putt has now been closed. We are working with the FORP to turn this area into one for ecology and are looking to provide a wildlife area for people to use and walk around.

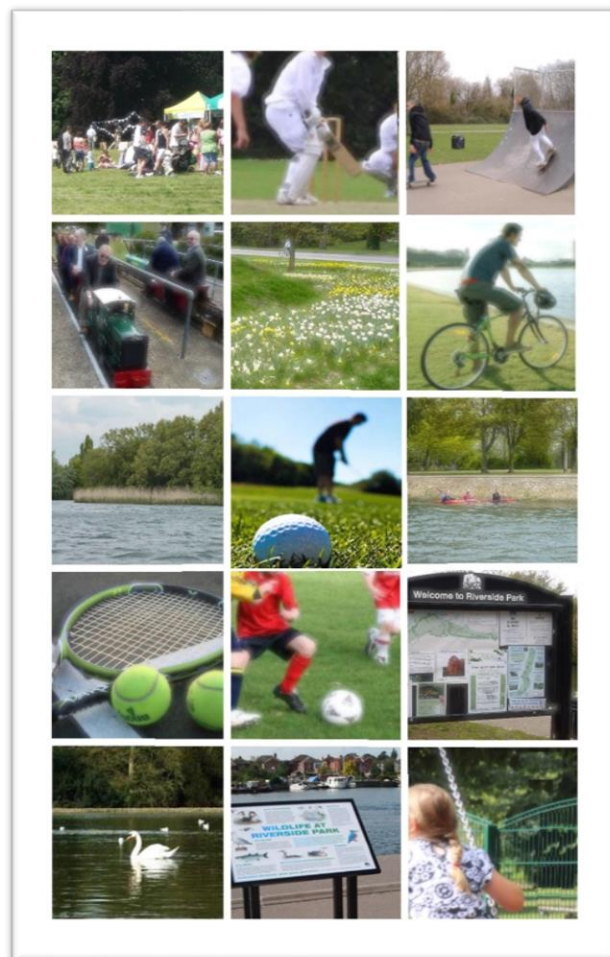
- 3.4.3 This area of the park also contains a car park, play area and large area of wild grassed open space. This stretch of the riverside walk is fresh water and there are different things to see in terms of wildlife compared to the other two sections of the park. The non-tidal section of the river supports a variety of freshwater fish, including Dace, Roach and the migratory Salmon and Sea trout. A walk up the river gives views onto the conservation areas on the other side where, with more restricted public access, unusual species make their home including Kingfisher, Water Vole, Otter, various warblers and Cuckoo.



The walk called “Bargebanks” alongside the Former Pitch & Putt course.

3.5 Facilities in Riverside Park include:

- Bookable Football Pitches
- Bookable Cricket Pitches
- Tennis courts
- Table Tennis
- Changing Rooms
- Toilets
- Three play areas
- Skate Park
- MUGA
- Cycling training track
- Cycle way
- 5 car parks
- Recycling Centre
- Picnic area
- Riverside walk
- Naturalised spring bulb planting
- Access to wildlife
- Benches, bins
- Outdoor Paddleboard via Active Nation Outdoor Activity Centre
- Interpretation signage
- Fully accessible path network.
- River vistas



Something for everyone.....

4 Healthy, Safe and Secure

4.1 Health and Safety

- 4.1.1 All activities undertaken by the city council at Riverside Park are subject to risk assessment. The City Services division has risk assessments in place covering the range of the team's work. The risk assessments are under annual review or reviewed for any significant change in working practice. Risk assessments are written in consultation with recognised trade unions, staff and managers and an example is included at appendix 2. These risk assessments are delivered to staff as part of the induction training and regular toolbox talks and can be accessed through the council's intranet site as well as through hard copies at operational depots. The Friends of Riverside Park are trained by Council staff to carry out risk assessments before undertaking any work and volunteers receive on-site briefings from qualified City Services staff before commencing any tasks.

- 4.1.2 All play areas within the park are inspected on a regular basis to ensure that equipment is safe and that the immediate area is suitably clean. Play area surveys are carried out by the Cleansing Operatives daily. Cleansing operatives are trained to survey and fault find by the Working Supervisor – Play and any faults/issues are immediately reported and recorded for the Supervisor to action. The play areas are then formally inspected on a six-week cycle by the Working Supervisor – Play and any faults are repaired using the City Services Landscape Team. The play areas also benefit from a six-monthly detailed inspection carried out by an independent play area inspection company on behalf of the Council's insurers, again any issues/faults raised are repaired by the in-house team.
- 4.1.3 Damage or maintenance issues regarding bins, seats and signs are reported during the daily check of the park by staff working in the City Services East district team. Any health and safety issues are prioritised and rectified based on the assessment of risk of injury to the public.
- 4.1.4 Although there is not a dedicated staff presence on site, the park is visited every day by City Services Cleansing operatives who also carry out visual inspections for any damage or vandalism. All staff wear a high visibility uniform with Southampton City Council, City Services logo on it. All staff can be approached by the public and are happy to help with any issues.

4.2 Control of Dogs

- 4.2.1 Previous dog control notices issued in 2008, have unfortunately now expired. The budget pressures of the previous decade mean that currently no dog enforcement is possible within the parks. The reintroduction of such would require significant resource allocation in terms of enforcement staff and the political will to allocate such resources.
- 4.2.2 We have commissioned and installed the following signage around the parks. Whilst not tackling in whole the absence of control notices, the signage actively promotes good dog ownership and has had very positive feedback from parks users, both with and without dogs.



5 Clean and Well Maintained

5.2 Service Commitments

5.2.3 The City Services department is responsible for managing, maintaining and developing Riverside Park. The department manages and maintains all Southampton's parks and green spaces in line with a set of 'service commitments' that define baseline standards of service that customers can expect to see delivered consistently across the city. The 'service commitments' were developed in consultation with community groups and key stakeholders and are written in clear and non-technical language to enable all customers to easily recognise the standards of service they can expect to see delivered within their neighbourhood. The green spaces service commitments are published on the parks web page on the city council's website. Service commitments are included within staff's team appraisal targets, with local performance reported and reviewed at regular team meetings.

5.3 Litter and Waste Management

5.2.1 Litter bins throughout the park are checked and emptied if required on a daily basis, seven days a week. All general waste, including dog waste, which is placed into the general waste bins, is collected on a daily basis and removed directly to the local waste transfer station at Netley. Where it is distributed to the waste collection contractors various recycling and waste disposal sites. In 2021 solar powered compactor bins have been installed. These bins require less empties and therefore less black sack waste, fuel and emissions.

5.2.2 All other waste items, such as wood, metal, plastic etc, are collected by the local teams and removed to the Depot, where they are sorted into relevant piles and then directly taken to the relevant recycling depots at Marchwood and Otterbourne.

5.2.3 Equipment maintenance is undertaken as faults are reported.

5.2.4 Vandalism is prioritised based on its risk to the public, where possible immediate repairs are undertaken, but if beyond repair then either the broken item is removed or taken out of action i.e. we fence it off, until it can be replaced. For example if a bench had been vandalised beyond repair we would remove it and replace it as soon as one could be delivered (on average 8 weeks). This process would equally apply to play and fitness equipment. Where we have had to immobilise or cordon off equipment we ensure signage is used to let the public and staff know what is happening in their park.

- 5.2.5 Trees - Southampton's trees are regularly inspected following nationally recognised guidelines. Southampton's risk management system is called the Southampton Tree Operational Risk Management System or STORMS for short. Inspections under this policy look at hazard, based on the likelihood that a tree will fail and if it did what target there is under it. The city is sectioned according to hazard rating and trees surveyed on a timeframe relating to their hazard rating. Therefore trees are subject to an inspection at least every four years, with high risk trees inspected every one to two years dependant on the target.
- 5.2.6 Biodiversity value is also taken into consideration when assessing trees and wherever possible deadwood, broken branches and dead trees are left in situ to provide habitats. Where crown reductions are required, wherever possible we undertake final cuts using coronet cuts. This gives an impression of a broken branch end rather than a truncated stump and provides extra habitats for insects. We also wire pieces of hollow trunks back into trees to provide bird and bat roosts. Where standing deadwood is near to footpaths we regularly inspect them to ensure it is not a danger to parks users.
- 5.2.7 Enviro-crime and cleanliness - The Council has a proactive approach to the removal of graffiti and fly posters on land it manages. The District Teams have cleansing operatives and equipment that enables them to remove graffiti and fly posters at short notice. Protective coatings are applied to features regularly targeted, facilitating rapid removal and training and equipment is issued to partner organisations and volunteers to enable them to tackle graffiti quickly, safely and effectively. Any offensive material is removed within 24 hours of being reported.
- 5.2.8 Machinery and grounds maintenance equipment – daily check sheets are completed by the operatives using the equipment and as faults are found they are removed from service and sent to the Transport Team for repair in our in-house workshops. Each piece of machinery and equipment is annually serviced and any repairs undertaken. Where appropriate all staff are formally trained in the use of equipment and also competency tested by line managers every two years.

5.3 Maintenance schedule

- 5.3.1 A typical day for the team in Riverside Park involves a number of daily routine tasks;
- Early morning litter pick
 - Emptying litter bins
 - Play area inspection
 - Skate park inspection

- General check of the park – including inspections of seats, bins and signs. Any damage identified and reported for follow up inspections / repair / maintenance as required
- Responding to queries from members of the public

5.3.2 In addition other maintenance tasks are;

- Mowing (at various frequencies as per maintenance map and according to performance standards)
- Sports pitch preparation, marking and renovation
- Seat and bin maintenance
- Shrub bed maintenance.
- Hedge cutting
- Sweeping car parks using a mechanical sweeper
- Removal of flood debris from paths

5.3.3 Football pitch marking is carried out once per week from September to April and nets are put out up on Friday and removed on Monday to accommodate the weekend football leagues. Each football pitch is played twice a week. The cricket wickets are prepared before each match during the season, from May to September. There are up to five games a week.

5.3.4 During the winter when the amount of general maintenance is reduced the team are able to work on alterations and improvements to the park and surrounding woodland, and in particular works required under the park's Biodiversity Management Statement, which are generally best carried out during this season to cause minimal disturbance to wildlife.

5.3.5 Fleet and specialist equipment is maintained by the councils fleet transport team – there is a dedicated mower service section looking after the larger grass cutting equipment and minor maintenance is undertaken by the Riverside staff as part of the daily equipment checking routines.

5.4 Active Nation - Service Level Agreement

5.4.1 The sports pitches and pavilion are leased to Active Nation to manage the booking of their use. The Council has a Service Level Agreement (SLA) with them to maintain the pitches and report any damages. The buildings are maintained by Active Nation with the exception of certain elements which are written into the contract. The car parks within the Active Nation demise are also maintained by them, with the exception of the shrub beds which fall under the SLA.

5.4.2 Under the SLA the Council carry out the day to day maintenance of the sports pitches including:

- Mowing
- Line marking
- Football post and net installation
- Goal mouth renovation
- Cricket wicket maintenance and renovation
- Bin emptying and litter clearance

5.4.3 The Council also have an agreement with Active Nation that we will open and close the toilets during the week (when the pavilion is not being used for sports matches) and keep them clean so that the public have a facility to use. Active Nation are responsible for the toilets at weekends and evenings when matches are on.

5.5 Car Parks

5.5.1 The car parks not within the Active Nation lease area are maintained by the City Service division. They are inspected on an ad hoc basis and repaired when necessary. This is an ongoing process.

5.5.2 All car parks are swept/litter picked on a regular basis.

5.5.3 The surfaces of the car parks are regularly inspected and holes are repaired as they develop.

6 Environmental Management

6.2 Waste Management

6.1.1 The City Services team recycles all green waste produced via its waste disposal contractor, and this applies to waste from Riverside Park. Green waste from the park and surrounding areas is collected and removed to the Depot at Mayfield Park where it is collected and taken to Petersfield for conversion into compost and mulch products.

6.2 Pesticides

- 6.2.1 The city council has in place safe working procedures to ensure that all pesticides, herbicides and fertilisers are properly applied, and their use minimised. These procedures ensure that all relevant legislation is followed and that records are properly kept and maintained. The council aims to minimise the use of chemical products and actively seeks alternative approaches where possible. Should there be no alternative to chemical usage then products are selected from an approved list, preventing the use of environmentally unfriendly products.
- 6.2.2 In 2021 the City Services team are rolling out a pilot of chemical free weed treatments and are working with the Green City team to review and update the Council's use of Pesticides Policy.

6.3 Peat

- 6.3.1 Peat use is kept to a minimum with no bedding plants or bedding displays in the park. Wherever possible when new shrubs and trees are bought for the park they are sourced to be supplied peat free.

6.4 Sustainability

- 6.4.1 The Parks team are currently trialling battery operated hand held equipment, such as leaf blowers, hedge cutters and strimmers. The staff have been providing good reports and we are reviewing replacements as existing equipment fails.
- 6.4.2 The Council has implemented a Social Value and Green City Procurement Policy which encourages the use of zero emission plant and equipment and scores tenders for supplies and services on environmental initiatives and social value contributions.
- 6.4.3 All car derived vans under 3.5 tonnes are currently being replaced with an all-electric fleet. These should be available to use within the first 6 months of 2021. The 8 x 1 tonne petrol powered tippers have now been replaced with electric zero emission vehicles.
- 6.4.4 The Council invested in a pilot to provide compactor bins across the city. The pilot that was undertaken in spring/summer 2020 was successful and the installation of these bins has started to roll out to areas such as Riverside Park throughout 2021. Compactor bins will help to reduce the amount of visits required for rubbish collection, reduce the numbers of bins required and reduce the numbers of vehicles having to drive through the parks – thus improving carbon footprint and reducing pollution. This will also avoid the need to use so many plastic lining bags throughout the year.

6.5 Trees

6.5.1 Tree surveys show the park to have a number of large mature trees and these provide a positive contribution to the landscape. There has been a new orchard/wildlife tree planting undertaken by the Friends group to enhance the tree stock in the park.

6.5.2 *The first section of a Tree Trail is in final phase of preparation by FORP.*

7 Conservation and Heritage

7.1 General

7.1.1 It is important that the unique characteristics Riverside Park are maintained and that the local history is preserved where possible. The park also has rich and varied wildlife interest that should be conserved;

7.1.2 “Walking north from Cobden Bridge you can obtain good views of river with the possibility of birds including Kingfisher, Redshank, Common Sandpiper, Grebes, Divers and Smew depending on season. Half way along the bank towards Woodmill a more natural shoreline supports Badgers and the scarce Pendulous flowered Helleborine (an orchid and main/only reliable Southampton site). In summer Grey mullet (fish) can be seen taking bread below people feeding swans and small Flounders (another fish) can be seen in the shallow water edges as the tide rises and falls.

7.1.3 North of Woodmill the water is non tidal and supports a variety of freshwater fish, including Dace, Roach and the migratory Salmon and Sea trout, also Carp according to a local fisherman. A walk up the river gives views onto the conservation areas on the other side where unusual species make their home including Kingfisher, Water Vole, Otter, various warblers and sometimes even Cuckoo. Look out for the spectacularly coloured demoiselle damselflies fluttering around the bank side vegetation during the summer months.” (Andy Welch, Team Leader - Ecology)

7.1.4 There are also numerous natural bat boxes in the recreation area of the park and woodpecker poles.

7.1.5 Riverside Park is also an important area for those interested in southern Hampshire’s history and heritage. For centuries the River Itchen, including the fishery at Woodmill, was controlled by the powerful bishops of Winchester, yielding significant revenues from salmon catches for the clergy’s coffers. As a trading route, the River Itchen has been commercially important from Saxon times and Winchester’s status as the capital city of Wessex and then for a time England was partly due to this link to the sea. Completion of a new navigation canal in the early eighteenth century increased and speeded up the

movement of goods. The new Navigation was designed as a combination of artificial cut ways together with sections of the River Itchen that were already navigable, and eventually formed a 10 mile long trading route from Winchester to the sea at Southampton. The Navigation included locks, sluices and hatches built to control the water levels and manage flow to the adjacent water meadows and mills, including a sea lock at Woodmill at its southernmost end and the centre of what is now Riverside Park. The Navigation provided an important method of moving goods, particularly agricultural produce and coal between the two cities and the intervening villages. Opened in 1710, it had fallen into disuse by 1869 by which time the London to Southampton railway had been constructed. The tow path alongside the canal, part of which runs the length of Riverside Park, now forms part of the Itchen Way and is a popular route for walkers.

7.2 Biodiversity

7.2.1 Much of Riverside Park was once reed bed and flood meadows but these areas were land filled in the mid 1900's, and further natural habitat has been lost in the intervening years through the development of public car parks and other more formal park features. The most important habitats left now outside of the River Itchen SSSI are remnant reed beds along the edge of some of the tidal stretch, wetland (particularly between the Pitch and Putt and Woodmill lane) and some areas of flower rich short grassland.

7.2.2 Riverside Park's Biodiversity Management Statement is at Appendix 6 and is used to undertake regular habitat management at Riverside park

7.3 Heritage - Brief History of the Park

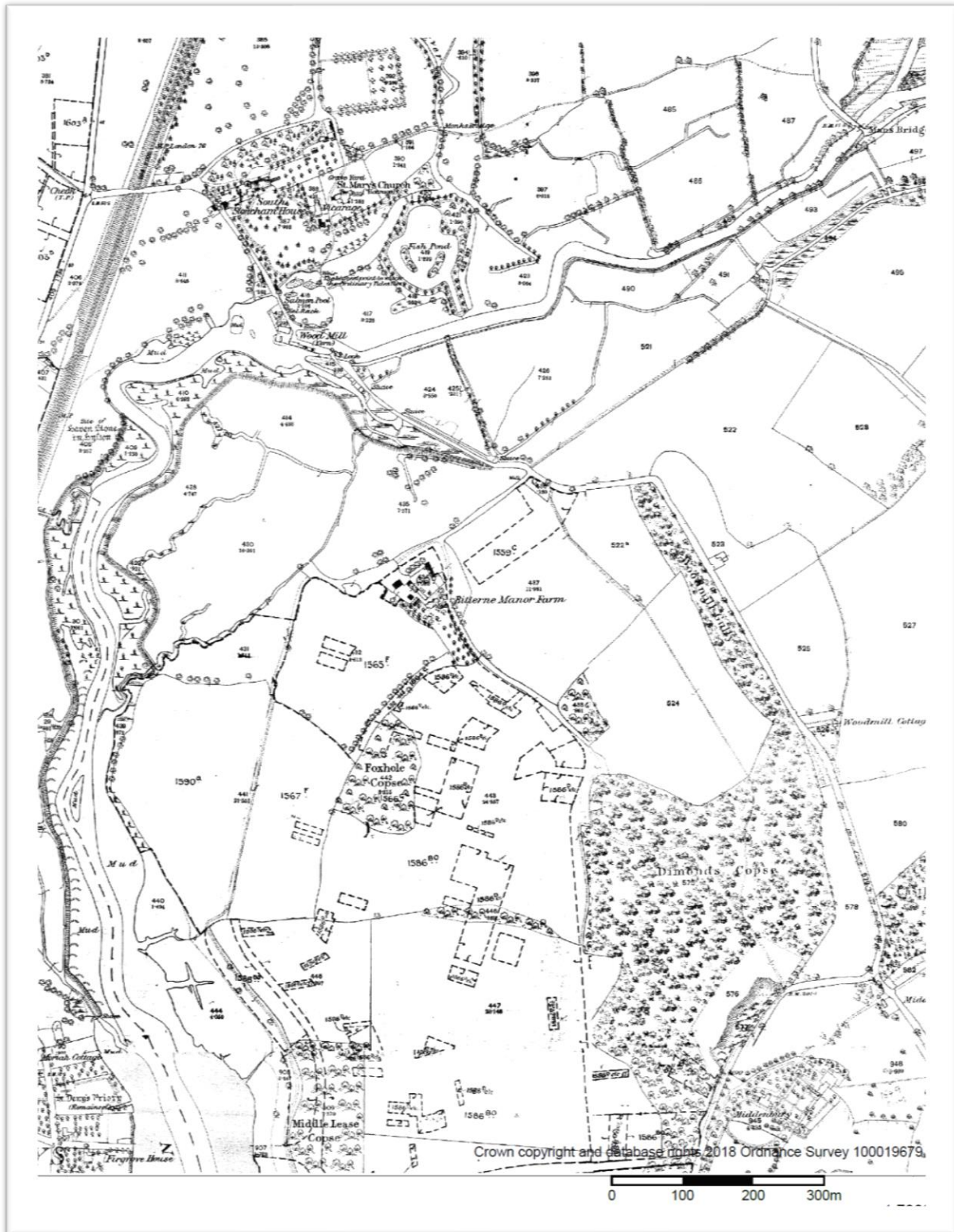
7.3.1 The area now known as Riverside Park was historically known by local people as three distinct areas, Cobden Meadows, Bitterne Park Recreation Ground and Riverside Park. At one time much of Cobden Meadows and the recreation area was marshland. At Cobden Meadows the water would come up to the back of the houses in Manor Farm Road and some of these houses had rights to moor boats.

7.3.2 *The stone and concrete revetment alongside Cobden Meadows was built in 1955 following use of the area during WW2. Concrete "dragon's teeth" were placed here presumably to prevent armoured vehicles landing. These were buried in the mudflats as a partial foundation for the rise in level to make the usable area.*

7.3.3 *Bitterne Park Recreation Ground to the rear of Manor Farm Road Schools was donated to the people of Southampton in 1897 by Lord Swaythling. It is the oldest part of Riverside Park. It was annexed by the school recently for their use resulting in the closure of a footpath*

7.3.4 The brick water mill building of 1820 known as Woodmill is currently used as a support base for the canoeing centre opened by the Duke of Edinburgh in circa 1964. The site contained in the 18th Century a water mill used by Walter Taylor who developed wood working manufacturing techniques for the production of pulley blocks for the Royal Navy. The circular saw was first developed at this location.

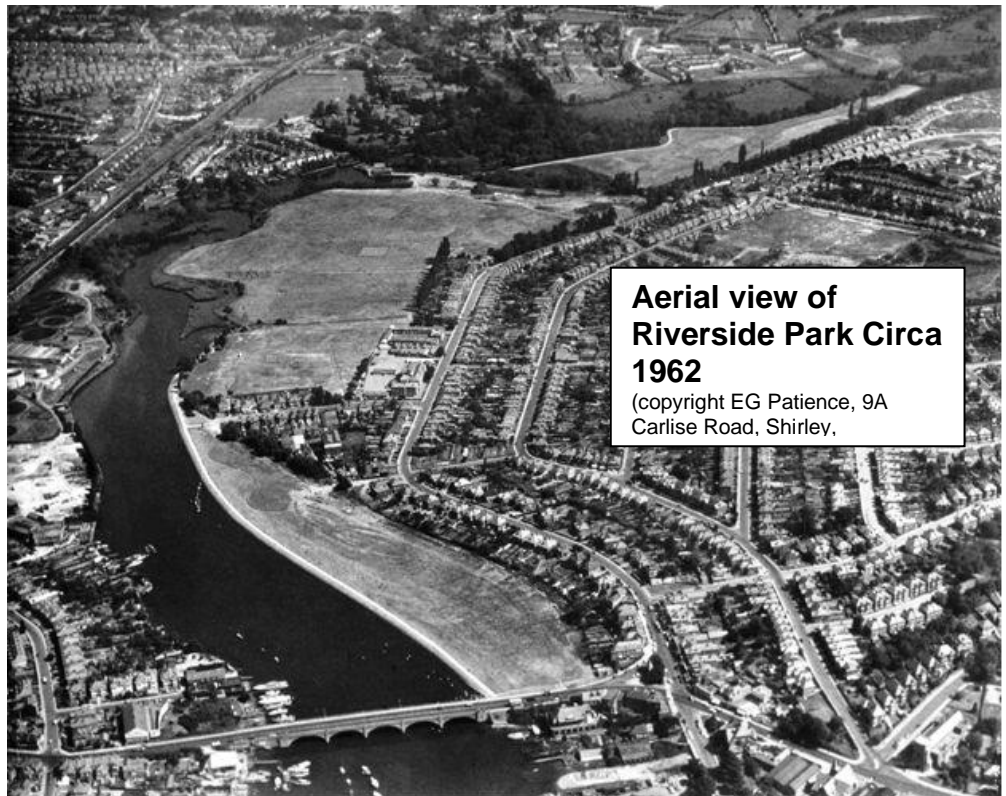
The following map dated 1882 appears to show Bitterne Park Farm house close to the junction of Manor Farm Road and Woodmill Lane and plots of farmland appear to cover parts of Riverside Park.



7.3.5 By 1949 the reclamation of foreshore between Bitterne Park Recreation area and Cobden Avenue was almost complete. Dragon's teeth weighing up to 5 tons were used to reclaim the marsh (ref news cutting SDE).

7.3.6 Official and unofficial tipping of rubbish occurred at Riverside Park between the wars into the late forties this was mainly on the area now used for sport pitches and the pitch and putt. In 1952 the Woodmill rubbish tip was 8ft deep and contained 130,000 tons of refuse including debris from WW2 bombing damage. The land was reclaimed and 5,000 lorries full of topsoil were imported to the site. A picnic site was placed at the bend in the river. Undulations found in the ground today are evidence of the site's former use. (Ref J Metcalf, Parks superintendent)

7.3.7 In 1962 the Southampton & District Society of Model Engineers installed 0.2 miles of railway track and also constructed rolling stock in the Cobden Meadows area *including latterly rolling stock suitable for less mobile passengers* and in 1963 the 18 hole pitch and putt course was opened. Also in 1963 the Bitterne Park Recreation Ground was opened and a new pavilion was opened in the following year.



7.3.8 Bitterne Park Recreation Ground, specifically the football pitches immediately behind the school, have a longer history. There are references to Bitterne Park Recreation Ground in council minutes going back to 1934 and the houses that back onto this area also date from that time.

7.3.9 There were shelters dotted along the footpath beside the river, but they were demolished in the 1990's.

(Contributed by Ken Prior, who worked in Riverside Park when first joined the council in September 1973. Also local resident and member of local history society.)

7.4 History of the Model Railway

- 7.4.1 “Our connection with Riverside Park dates back to 1958/59 when the then ‘Southampton and District Society of Model Engineers’ approached the City Council with the purpose of building a Miniature Railway in the City. The Society also ran boats on the Ornamental Lake on the Common”.
- 7.4.2 The Society had found an area known as ‘Cobden Meadows’ that was very suitable for their purpose, and talks began with the council’s ‘open spaces’ officers. Permission was eventually granted in 1960 for the building of the track and work started in earnest on raising the funds required for construction to begin. The building of the track took some fifteen months. It is one fifth of a mile in length and enabled, when completed, the running of three quarter and one inch to the foot scale models. This original track was officially opened by Alderman Reginald Haskell, the then Mayor of Southampton, on the 14th April 1962. The locomotives that use the track are privately owned by the members of the Society. Their construction and workings are based on the same principles as those of the main line. It is interesting to note that the Society’s archives records that a total of ten thousand, six hundred and ninety four passengers were carried in the first year at the cost of 6d (3p) per ride. Public Liability cost the princely sum of £1 - 7s - 0d (£1.35p). The ‘ticket office’ and the ‘members hut’ were erected during the winter of 1962 and are still in use, although the ‘ticket office’ has moved to accommodate the ground level track. The ‘member’s hut’ facilities have been increased as the Society has grown.
- 7.4.3 In September 1993 the Society by now called the Southampton Society of Model Engineers Ltd applied for and was granted the right to build a one and a half inch to the foot ground level track around the perimeter of the existing track. This project was completed in time for the thirty fifth anniversary of the original track. The official opening of the ground level track took place on the 12th April 1997 by Mr Jeremy Hill of the recreation, parks and open spaces unit of Southampton City Council. This track, from cutting the first sod to its opening, had taken three years, some three and a quarter tons of rail, three thousand, six hundred sleepers, fourteen thousand screws. Its concrete base contains some eighty five tons of ballast, twelve tons of sand and four tons of cement.
- 7.4.4 The Society celebrated its ninetieth year in 2002 which coincided with the fortieth year of the first track at Riverside Park. During this period the Society has given approximately four hundred thousand rides to members of the public since its inauguration.

7.4.5 The Photo may be of general interest an aerial view of the Bitterne Park and surrounding area circa 1962/3. The date is discernible by the omission of the ticket hut and members hut from the picture. On the rear of the picture a stamp states that the photo is copyright to E, G, Patience, 9A Carlisle Road, Shirley, Southampton.”



*(Contributed by
The Southampton Society of Model
Engineers Ltd)*

8 Community Involvement

8.1 Friends of Riverside Park

8.1.1 The Friends of Riverside Park (FORP) have been constituted for over 10 years and although their committee has changed they have gone from strength to strength with their accomplishments. They have secured funding in excess of £75,000 which has provided a new play area at Woodmill and a Multi-Use Games Area near to the skatepark and they continue to carry out volunteer tasks across the park.

8.1.2 Their aims are:

- maintain and improve the physical and natural environment of the park in liaison with Southampton City Council
- promote wider use of Riverside Park across the whole community
- protect and promote the natural beauty and wildlife of the Park
- help make the Park a clean, safe and healthy place to be
- secure funds to improve amenities
- ensure community-based involvement in the future of the Park

8.1.3 They are committed to mitigating climate change and have undertaken new plantings of trees in the park. They are also keen to promote pollinating plants and undertake a number of wildflower and bulb plantings across Riverside. They have been working over the last few years on renovating the hedge along Manor Farm Road, bringing it back to a formal hawthorn hedge and clearing out the ivy and sycamores which have invaded it. Their monthly Saturday litter picks help to make the place clean and these have extended to some week day sessions for those who can't make the weekend.



8.1.4 The Friends continue with regular walks in the summer, meetings, and participation in park maintenance activities. FORP acts as a valuable source of feedback and a 'sounding board' for new proposals to improve the park. The group was consulted on and has contributed toward the Riverside Park Management Plan. More about the Friends of Riverside Park and their current activities can be found by visiting <http://friendsofriversidepark.org.uk/>

8.1.5 Another key volunteer group already involved in the park is the Southampton Model Engineers who operate the model railway in the park. The railway is run on an entirely voluntary basis and all proceeds are reinvested in maintenance and other costs. All the engines are home built by their owners who dedicate hours to the society. The society invite other clubs to use the track for one weekend during the summer and also run the tracks for the residents of Bonhomie House, a sheltered housing group for disabled people and mother and toddler groups within the city. The society also holds a charity day when all the proceeds are donated to a charity voted for by the members.

8.1.6 There are many different types of user groups that enjoy Riverside Park. Consultation with the now, well established Friends group shows a wide range of uses including dog walking, wildlife watching, fishing, canoeing, stand up paddle boarding, football, skating, cycling, cricket, the model railway, and of course children and young adults' play. All in all, a wide and inclusive range of people using the park from a wide area up to and including Townhill, Swaythling, and Bitterne.

FORP are currently involved in a scheme to name fine specimen trees within the park and label them with professional grade tree labels that are used in Botanical Gardens.

8.1.7 Both the football and cricket pitches provided at Riverside Park are very popular and generally well used. There is some scope to increase the use of the cricket facilities by higher Divisions within the local Leagues. The hire of pitches in the recreation area is managed by the Active Nation strategic partnership based at the Sports Centre. Riverside Park hosts an evening cricket league, weekend Hampshire Cricket League matches, Saturday and Sunday football leagues and the Commercial Houses football league. Any remaining pitch bookings are available for members of the public to book.

8.2 User Feedback

8.2.1 In order to secure their funding bid from Veolia FORP undertook user feedback in 2016. The group devised a set of questions which they then used to ask people using the park their views. They undertook a number of onsite chats, they also used their AGM, community events and their regular litter picks to get people involved and hear their feedback. The results of this are summarised as follows and were used as part of their bid to get funding for a new Multi-Use Games Area:

Riverside park survey results overview of the two series of surveys

Collated views representing 114 people

How often do you come to Riverside Park?

Daily	36
At least twice a week	42
Weekly	18
Monthly	11
Less than once a month	7

How would you describe yourself?

Adults	57
Teenagers	24
Primary school age	23
Pre-school	10

What do you use the park for? / Why do you come to Riverside Park?

Football	45
Playgrounds	32
Walking	25
Skate park	23
Dog walking	23
Tennis	17
Watching / feeding the ducks / swans	16
Cycling	14
Scooting	10
Wildlife	9
Running	8
Sitting	6
Socialising	3

What do you think could help develop the wildlife in the park?

What would help you appreciate wildlife in the park more?

Nest sites	22
More information / signs	19

Less dog mess	16
Special days and activities	12
A nature trail	11
Organised walks / activities	7
Dog free zones	2
Control cycling	1

What improvements would you like to see?

Build a MUGA	64
Improvements to the toilets	45
Better drainage especially round play parks	18
Improve the skate park	16
More seats / maintenance of current seats	15
Have a café	15
More flowers / shrubs	15
Reduce litter / reduce litter	13
More equipment in the play parks	10
Running route	10
Improved paths / maintenance / potholes	11
Improve maintenance in play parks	6
Improved tennis	9
Basketball hoops	3
Improvements to changing facilities	2
Less graffiti	2
Children's sized football pitches and goals	2
A splash pool	2
Better lighting	2

Voting survey taken during a Park-Run session – votes from 87 people

Nature trails and wildlife activities	62 votes
Improve the toilet facilities	61 votes
Build a Multi Use Games Area	58 votes
Improve drainage in some areas of the park	41 votes
Improve the skate park	35 votes

9 Marketing

- 9.1 Riverside Park can be found on the Council website, with basic information being given about what facilities there are there. It is also on Trip Advisor where it scores a 4.5 out of 5 from 202 reviews and is described as the number 10 out of 102 things to do in Southampton. https://www.tripadvisor.co.uk/Attraction_Review-g186299-d216070-Reviews-Riverside_Park-Southampton_Hampshire_England.html
- 9.2 Events – Unfortunately the majority of the events being referred to in this Management plan did not take place in 2020 due to the Covid-19 but below provides examples of events that have taken place and are likely to in the future.
- 9.2.1 Events are advertised in local press and in posters, leaflets and newsletters. Events in Riverside Park will be used to promote the park more widely
- 9.2.2 There is a monthly litter pick organised by the Friends Group on the first Saturday of every month. These have been extended to include some weekday sessions for those who can't attend the weekends.
- 9.2.3 FORP bulb planting on 30th October 2019, also wildflower seeding of bunds at Dimond Road car park in early spring 2020, dates to be agreed. More details on FORP events on their web site <http://friendsofriversidepark.org.uk/>
- 9.2.4 Every Sunday the Junior Parkrun is held at the pavilion. This is a timed organised 2k run for 4 to 14 year olds held at 9:00 am. For more details see this web page: <http://www.parkrun.org.uk/southampton-juniors/>
- 9.2.5 The annual community fair run by Cole's Amusements is situated at the sports pitches by the Woodmill bridge. It offers low priced rides and amusements for the whole family to enjoy. It is usually there for a few days at the beginning of summer as part of a tour of the cities larger parks and green spaces.
- 9.2.6 All events are publicised through the Discover Southampton web site which is set up through a partnership with the Council and local businesses <http://www.discover-southampton.co.uk/visit/whats-on> and on the Friends of Riverside Park website <http://www.friendsofriversidepark.org/> . They are also locally advertised in the information boards in the park.

10 Management

10.1 Policy context

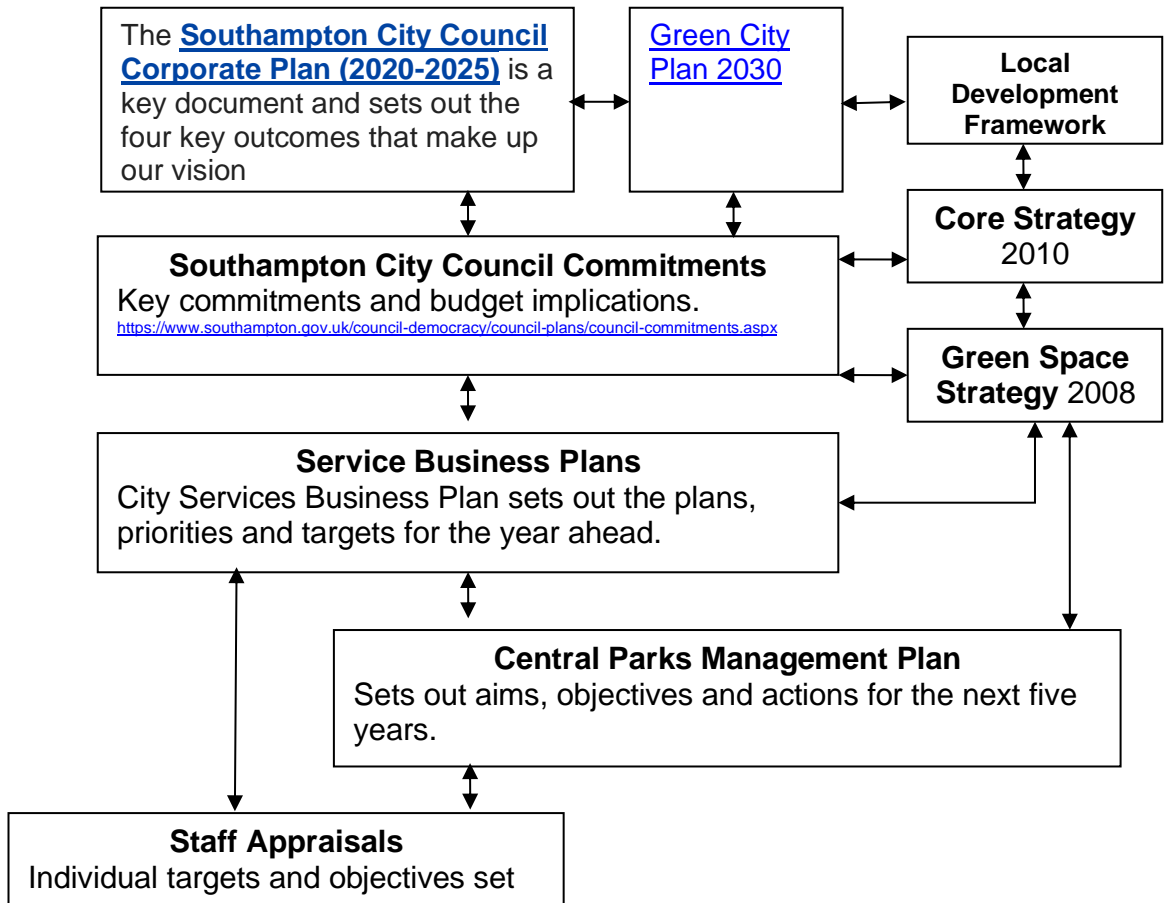


Figure 1: The 'golden thread' of performance management

10.1.1 Figure 1 shows the golden thread of plans and strategies for Southampton City Council and shows how the St James' Park management plan fits into this. Southampton's Green Space Strategy was approved in October 2008 and the full document can be found here <http://www.southampton.gov.uk/people-places/parks-open-spaces/parks/park-management/green-space-strategy.aspx>.

10.2 Council Priorities

10.2.1 Riverside Park supports the Council's four priorities in the following ways;



Southampton has strong and sustainable economic growth

10.2.2 Good quality parks are shown to increase the economic value of the area in which they are situated. Riverside Park is a good example of how a large area of historic, well maintained green space enhances residential areas encouraging ongoing investment in the area.

10.2.3 In addition to the three play areas which offer children a place to explore, meet friends and experience risk in a controlled environment, the park also provides a learning resource for the local residents and schools and has been used for school trips to support the curriculum. The park also runs the very popular junior Park run given children an opportunity to keep fit and reduce obesity which is a priority for the city



Children and young people get a good start in life



People in Southampton live safe, healthy, independent lives

10.2.4 A network of footpaths encourage people to walk and run in an otherwise built up urban area. The national cycle network runs through the park encouraging people to use other forms of transport than cars to get to work. There are plenty of quieter areas within the park to relax and aid mental wellbeing.

10.2.5 The park has received the green flag for a number of years and therefore provides a high quality standard of green space for people to use and enjoy, making the city a more attractive place to live and work.



Southampton is an attractive modern city, where people are proud to live and work

10.3 Finance and budget

- 10.3.1 In common with many local authorities, our services have come under increasing pressure and reduction. We are trying to mitigate the effects of this as well as we can.
- 10.3.2 The City Services division no longer collects detailed data on individual parks. This decision was made following an analysis of what data was important for the business compared to the staff resource and ability to collect that data. It was decided that the time and effort taken to collect such data was not cost efficient.
- 10.3.3 In 2020/21 the estimated East Area Parks budget for Riverside Park was circa £70k, this includes grass maintenance, sports pitch maintenance (football and cricket), play area maintenance, conservation management, tree maintenance, shrub maintenance, sweeping and bin emptying.
- 10.3.4 Open Space contributions through the development, Section 106 agreement (S106) scheme are no longer collected and all previous s106 budget for Riverside has now been used on capital improvements (S106 agreements are now solely used for Highways schemes). Southampton City Council has instead instigated a Community Infrastructure Levy (CIL) scheme in order to fund a wide range of capital improvements needed to mitigate ongoing development. An element of this levy is for green space provision and improvement. The Council also provides capital funding through Council resource and borrowing. Schemes are worked up in conjunction with the local community and bids are then made to the appropriate fund, this could be internally CIL, Capital Resource or externally to one of the land fill tax funding providers (such as Veolia). Successful bids at Riverside have include £50,000 from landfill tax funding for a play area and £100,000 from a mixture of landfill tax funding, Council resource and residual S106. Future projects are currently being developed (such as the former pitch and putt area, Cobden Meadow play area and Mansbridge entrance area) with a view to future funding bids. There is likely to be circa £30,000 available over the next two years but this will be confirmed in the March 2021 budget.
- 10.3.5 The Parks team will be provided with the 2021/22 detail budget information in March.

10.4 Management structures

- 10.4.1 The management and maintenance of Riverside Park is the responsibility of the East district team which is part of City Services, under the Place Directorate. The service also includes Waste Operations, Fleet Operations, Ecology, Trees, Landscapes, Pest Control and Commercial and Service Development. The East district team combines street cleansing functions and grounds maintenance and horticulture in parks and open spaces.
- 10.4.2 Managers within the section undertake management by walking about which includes visits to Riverside Park. The Team Leader is the main link between frontline staff and operations management. The action plan in section 11 will be reviewed quarterly by the management team to monitor progress and reflect on performance.

10.5 Quality Audit

10.5.1 Park development needs and priorities are informed by user consultation and standards set out in Southampton's green space strategy. This promotes audits to be undertaken to assess the parks current status and to give a baseline for future improvement and required investment. A quality audit of all of Southampton's parks was undertaken by an independent consultant in autumn 2009 and then again internally in 2015. The data collected was based on green flag criteria and indicates park strengths and where quality needs to be improved.

10.5.2 The current audit is underway but due to the resource challenges that have been presented by Covid-19 including mandatory shielding of vulnerable staff, it is anticipated that the audit will be completed by the end of 2021.

10.6 Resources

10.6.1 The day to day management and maintenance of Riverside Park is undertaken principally by the East District Team within the City Services division. Mike McSorley is the Team Leader responsible for the park and the team working within it. Supporting Mike is Martin Willcox – Operations Manager, David Tyrie – Head of City Services, Nick Yeats – Service Manager – Commercial and Service Development assist with policy and strategic development of the park. Currently there are nine permanent full-time staff within the East and Central Teams who can be involved in the maintenance of the park at any one time. There is also a Working Supervisor supporting Mike. Generally two members of the team will carry out maintenance within the park on a daily basis.

10.6.2 All staff have an annual appraisal, where the objectives set out in the management plan as well as their personal objectives are agreed and any training needs are identified. On top of this, the district team has a monthly area team meeting to set out objectives and to monitor progress. Staff are encouraged to contribute ideas which might help improve the service.

11 Actions and Recommendations

11.1 Measuring success and progress towards Green Flag criteria

11.1.1 The following action plan provides targets and goals to work to ensuring continual improvement of the park. It includes actions for all stakeholders and our successes are recognised within the "Progress/Comments" section of the plan.

11.2 Action plan for 2020/25

11.2.1 This action plan is a dynamic working document that is reviewed and updated annually. Some proposed actions are inspirational and will depend upon sourcing adequate funding, in collaboration with the Friends of Riverside Park. Although the plan has been ordered according to Green Flag criteria, several of the actions fall under more than one heading.

Action	Lead officer	Key partners and consultees	Estimated resource required and source of funding	Target Completion date	Progress/Comments
<i>Welcoming Place</i>					
Make sure info cabinets are kept on subject and refer only to actions and news about Riverside Park.	Chair FORP	SCC Engagement Officer	NA	None	On-going
Complete Cobden Bridge entrance to allow better access for cycling onto the highway.	Greg Churcher	Parks Officers	£30,000	December 2019	Complete
Install traffic lights on Woodmill Bridge and improve crossing between park sites (Recreation area and former Pitch and putt)	Bukola Olaniyan	Parks Officers	£100,000	February 2020	Complete
Improved cycling signage at Woodmill Entrances	Greg Churcher	Parks Officers	£5000	Summer 2021	Initial site visits undertaken
Naming the car parks along Manor Farm road as well as installing name plates.	FORP	Parks Officers	£500	December 2025	Completion date has been extended as consultation and funding is required.
Work with Waste and Enforcement officers to tackle fly tipping next to the recycling bins in the Woodmill car park.	Martin Willcox	Waste & Enforcement officers	£1000	February 2021	There has been great improvement since regular monitoring of the site but this will need to continue
Repairs to the car park next to the tennis courts is required.	Martin Willcox	Matthew Lovell	£2000	March 2025	

Action	Lead officer	Key partners and consultees	Estimated resource required and source of funding	Target Completion date	Progress/Comments
Railings at the Cobden Bridge entrance need repairing following a RTA	Matthew Lovell	Martin Willcox	£2000	September 2024	
<i>Healthy, safe and secure</i>					
Review of CCTV and Lighting at Woodmill Lane	Chris Brown	Parks Officers	£5000	Autumn 2020	Initial meetings held following assault in Woodmill Lane.
Install fencing along car park to prevent free access into depot work area.	Martin Willcox	Building Operations Parks Team	£5000	October 2019	Complete
Undertake line marking of working areas to prevent parking and obstruction of work areas.	Martin Willcox	Park Officers	£2000	October 2019	Complete
Upgrade intruder alarm to depot	Nick Yeats	Martin Willcox	£500	Summer 2019	Complete
Replace logs with more permanent bunding at Dimond Road Car Park	Matthew Lovell	Cliff Brown Martin Willcox	£2000	Winter 2019	Complete
Replace damaged barrier at River View	Martin Willcox	Cliff Brown	£2,000	Summer 2019	Complete
Upgrade height barriers so as they are more visible as well as showing the maximum height of vehicles that can enter	Martin Willcox	Matthew Lovell	£2000	Autumn 2021	Signage and painting of the barriers were completed in Summer 2022 but are now in need of a new coat of paint.
Low level barrier at River Walk entrance to be replaced with droppable bollards to make safer for cyclists.	Mathew Lovell	Nick Yeats	£2100	June 2024	Depending if funding is available
Realign low level striking post to the barrier within Woodmill car park following being hit by a vehicle.	Matthew Lovell	Martin Willcox	£200	April 2024	
Top up bunding throughout site where required to prevent traveller incursions	Matthew Lovell	Nick Yeats	?		Need to identify where the funding is coming from but needs resolving asap

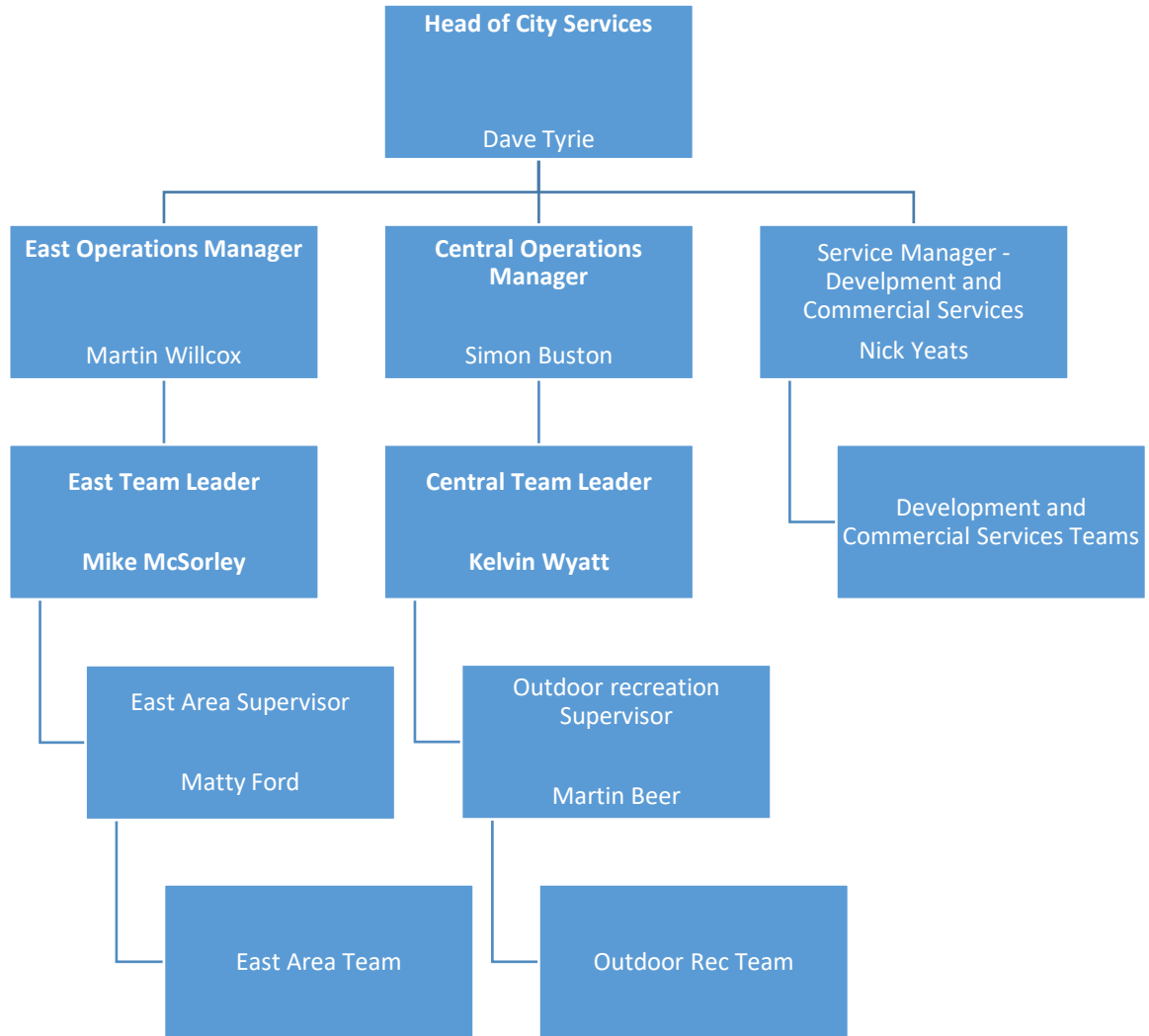
Action	Lead officer	Key partners and consultees	Estimated resource required and source of funding	Target Completion date	Progress/Comments
Provision and replacement of equipment within the play areas to be reviewed.	Nick Yeats	Matthew Lovell			Once a decision has been made, funding will need to be agreed.
<i>Clean and well maintained</i>					
Monthly Friends Group litterpick	FORP		NA	On going from March 2020	On-going
Clearance of ditch along River Walk/back of former pitch and putt	Matthew Lovell	Martin Willcox, Gary Claydon-Bone Colin Perris	£5,000	February 2020	Complete
Hedge renovation	FORP	Martin Willcox Cliff Brown	£500	March 2020	Complete
Bulb planting	FORP	Martin Willcox Cliff Brown	£200	October 2019	Complete
Replace broken and old wooden benches with new metal style	Cliff Brown	FORP	£15,000		Complete
Install a turn around at the Cobden bridge end of the path so as to clean and empty bins without churning up the grass.	Matthew Lovell	Lindsay McCulloch	£5000	October 2021	Completed in August 2022
Improve the signage and defences at the Cobden Meadows car park to try and deter poor and overnight parking.	Cliff Brown	Martin Willcox	£4000	February 2022	
Removal of worn out fencing at the Riverwalk entrance to the park alongside the old Pitch & Putt site as	Nick Yeats	Martin Willcox	£500	April 2021	Completed

Action	Lead officer	Key partners and consultees	Estimated resource required and source of funding	Target Completion date	Progress/Comments
to open up the park and make easier to maintain					
Remove old bases where bins were located prior to installing solar bins	Martin Willcox	Area Team		March 2024	
Clean up and improve drainage to the Woodmill carpark following flooding.	Martin Willcox	Area Team	Existing labour & equipment to be used.	March 2024	Partly complete
Removal and replacing of dead trees that mark the platinum jubilee	Will Taylor	Nick Yeats			High priority to identify funding.
Regular removal of graffiti from the cricket pavilion	Martin Willcox	Active Nations		Ongoing	Already been removed but is an ongoing problem
<i>Sustainability</i>					
Install electric car point	Transport Team	Martin Willcox	£1000	January 2020	Completed
Implement electric vehicles	Fleet Transport	Martin Willcox	£40000	Autumn 2020	One vehicle is in use at this site at present
Implement compactor bins	Dave Tyrie	Martin Willcox	£10000	Winter 2022	Completed Spring 2023
Removal of the old Pitch & Putt building that has become a target for ASB.	Martin Willcox	Property Services			Property Services have arranged for the electricity supply to be disconnected but at present there is not an available budget to arrange removal.
<i>Conservation and heritage</i>					
Plant fruit trees for wildlife/orchard	FORP	Cliff Brown Hilary Bradley Matty Ford	£540	Winter 2019	Complete
Convert former pitch and putt to conservation habitat area	Lindsay McCulloch	Cliff Brown Andy Welch	£2000	Summer 2020	Ongoing – site left uncut but further works required


Action	Lead officer	Key partners and consultees	Estimated resource required and source of funding	Target Completion date	Progress/Comments
		Martin Willcox Nick Yeats			
<i>Install a Tree Trail – place QR codes onto trees to provide details and encourage people to find them whilst out for a walk</i>	FORP	Trees Team, Nick Yeats, Cliff Brown	£500	Summer 2020	Trees identified and awaiting Friends to organise QR codes
<i>Community involvement</i>					
Development of a community garden	FORP	Martin Willcox, Nick Yeats			Early days of discussion.
Work with Friends Group to install a new MUGA near to the skatepark	Cliff Brown	Groundwork South, FORP, Local Cllrs	£100k, S106, CIL and grants	September 2019	Complete.
Work with the model railway volunteers to extend removable railings	Nick Yeats	Matthew Lovell Model railway volunteers	Joint exercise	March 2024	Completed
<i>Marketing</i>					
Ensure the council website is kept up to date with Riverside Park information and event updates	Events	Cliff Brown	Officer time	Ongoing	Includes making use of what's on pages
<i>Management</i>					
Implement restructure for City Services	Martin Willcox	East Team	Officer Time	October 2019	Complete

Appendix 1 – Staff Structure

Staff Structure



Appendix 2 – Sample Risk Assessment

General Risk Assessment									
Description of Job/Task being assessed:		Manual Handling Lifting, Loading, Transporting, Placing and Laying Paving Slabs, Kerb Stones, Straw bales, Nottscarpet, Bags of Fertiliser, Grass Seed, Fly tipped material, Litter bags, Railway Sleepers, Seat Bins & Benches, Lifting Gully / Manhole Covers							
Directorate	Transactions & Universal Services		Division	City Services	Section	Grounds Maintenance	Risk Assessor(s)	Safety Hub	
Ref no	RA 007 Grounds Maintenance	Location/Site	Various	In consultation with	Simon Buston Brian Kneller Martin Wilcox Graham Pugh Dave Vowles (Union Safety Rep)			Date	October 2019

What are the hazards?	Who might be harmed and how?	What are you already doing?	What further action is necessary?	Action by who?	Action by when?	Done	Residual Risk	RAG
Manual Handling	Employees: Musculoskeletal and work related upper	All employees trained in manual handling at induction with refresher carried out by trained RoSPA Manual Handling Trainers at induction and two to three year regular intervals. See SWP Manual Handling of	Line managers to record all formal training and tool box talks. All evidence to be placed in individuals training folder.	Line Managers	Dec 2020	X	Med	

What are the hazards?	Who might be harmed and how?	What are you already doing?	What further action is necessary?	Action by who?	Action by when?	Done	Residual Risk	R A G
	and lower limb disorders.	<p>Loads. No staff to work without appropriate PPE to include:</p> <ul style="list-style-type: none"> • Safety footwear to EN ISO 20345 Class SBP, 200 Joule toe protection, oil resistant outer sole and mid sole penetration resistance. • High visibility jacket or tabard • Protective gloves 						
Loading / unloading of materials for transfer to site	<p>Employees: Musculoskeletal and work related upper and lower limb disorders. Crushed by vehicle / trailer</p>	<ul style="list-style-type: none"> • Drivers are to ensure that the hand break is applied and vehicle in gear. • Vehicle parked on firm level ground. • Driver to remove keys from ignition and kept secure when loading / unloading vehicle / trailer • Manual handling training provided at induction with refresher at two to three year intervals. 	<p>None</p> <p>Line managers to record all formal training and tool box talks. All evidence to be placed in individuals training folder.</p>	Line Managers	Dec 2020	X	Med	

What are the hazards?	Who might be harmed and how?	What are you already doing?	What further action is necessary?	Action by who?	Action by when?	Done	Residual Risk	R A G
		<ul style="list-style-type: none"> • Tool box talks on annual basis to heighten awareness and reinforce correct principles. • Ramps and tail lift used on vehicles and trailers where the weight, size or nature of the equipment dictate. • Use of mechanical aids e.g. fork lift truck, sack truck 						
Placing material into place	Employees: Musculoskeletal and work related upper and lower limb disorders	<ul style="list-style-type: none"> • All employees trained in manual handling at induction with refresher carried out by trained RoSPA Manual Handling Trainers at induction and two to three year regular intervals. • Use of mechanical aids e.g. fork lift truck, sack truck 						
Slips, Trips, Falls	Employees: Cuts, grazes, bruising and fractures.	<ul style="list-style-type: none"> • Safety footwear to EN ISO 20345 Class SBP, 200 Joule toe protection, oil resistant outer sole and mid sole penetration resistance to be worn at all times. 	None	None	N/A		Low	

What are the hazards?	Who might be harmed and how?	What are you already doing?	What further action is necessary?	Action by who?	Action by when?	Done	Residual Risk	R A G
		<ul style="list-style-type: none"> Kept clear of mud and debris, with good sole pattern. 						
Burns Cuts and other Injuries	Employees: Moving hazardous items	<ul style="list-style-type: none"> Wearing the correct PPE including: Gloves, Goggles, Ballistic Trousers, Safety Footwear, High visibility Jacket or Tabard 	None	None	N/A		Low	
Lifting Gully / Inspection Covers next to or on the Public Highway	Employees and Others: Struck by a vehicle	<ul style="list-style-type: none"> Wearing of Hi vis Jacket tabard Class 3 EN-ISO-20471 Use appropriate signage in accordance with the Safety at Street Works and Road Works A Code of Practice October 2013 Safety footwear to EN ISO 20345 Class SBP, 200 Joule toe protection, oil resistant outer sole and mid sole penetration resistance to be worn at all times 	None	None	N/A		Low	
Dropping Inspection Cover / Gully Cover on foot	Employees: Inspection cover falling on foot	<ul style="list-style-type: none"> Use tools for lifting manhole covers. Safety footwear to EN ISO 20345 Class SBP, 200 Joule toe 	None	None	N/A		Low	

What are the hazards?	Who might be harmed and how?	What are you already doing?	What further action is necessary?	Action by who?	Action by when?	Done	Residual Risk	R A G
		protection, oil resistant outer sole and mid sole penetration resistance to be worn at all times						
Line manager (print/sign):	Simon Buston Brian Kneller Martin Wilcox Graham Pugh Dave Vowles (Union Safety Rep)	Date	October 2019	Next Review Date	October 2020			
Line manager (print/sign):		Date		Next Review Date				

What are the hazards?	Who might be harmed and how?	What are you already doing?		What further action is necessary?	Action by who?	Action by when?	Done	Residual Risk	R A G
Line manager (print/sign):		Date		Next Review Date					

Appendix 3 – Key Stakeholders

List of Key Stakeholders in Riverside Park

Local Councillors

Friends of Riverside Park

Bitterne Park Residents Association

Southampton Commons and Parks Protection Society

Hampshire & Isle of Wight Wildlife Trust

The Southampton Society of Model Engineers Ltd

The Police

Southampton parks department (part of City Services)

Groundwork South

Woodmill Outdoor Activity Centre

Appendix 4 - Map of Riverside Park



Appendix 5 - Biodiversity Maintenance Map of Riverside Park



Appendix 6 - Biodiversity Management Statement

Site name: Riverside Park/Cobden Meadows

Boundary: between St Denys Road and the Mansbridge

Area: Bitterne Park

Neighbourhood area: East

Designation: : abuts the River Itchen Site of Special Scientific Interest (SSSI), River Itchen Special Area of Conservation (SAC) and the Solent and Dorset Coast Special Protection Area. There are also three Sites of Importance for Nature Conservation (SINCs); Riverside Park, Riverside Park North Woodland, and Marhill Copse and Meadow.

Nationally Protected species: Bats and Badger
(river includes Otter, Water vole, Kingfisher, Salmon)

Hampshire BAP species:
Button snout moth

Species Special in Southampton context / Community favourites:
Mute swan, Black Swan, Common sandpiper, Reed warbler, Water rail, Black headed gulls, Pendulous flowered helleborine, Kingfisher

Other noteworthy species regularly recorded: Mediterranean gull, Sandwich tern

Species recorded as occasional visitors/vagrants: Smew, divers, Sabines gull, Little egret, Redshank

Important habitats: Overgrown pond/fen, remnant reed bed, river shingle shore

Notes on Public use: This park was once a large area of biodiverse reed bed but was landfilled and seeded with ryegrass soon after WW2. Some semi-natural areas did establish but were then cleared for amenity use, notably the sports pitches, cycle paths and play plus a desire to produce a “tidy” amenity space. Improving biodiversity in the park is therefore starting from a low base.

Riverside Park’s lack of major lighting (although it has considerable night-glow from surrounding areas) enables bats to feed and roost in the park.

Community group stakeholders: Friends of Riverside Park

Major concerns for management: Reed beds need urgent management, planted trees (mainly ornamental species) shading edges and banks causing loss of associated wildlife.

Management change opportunities:

A major improvement project would be to reconfigure the revetment river edge to create some new reed bed and other riverside vegetation – however this would be a major project requiring a very large budget and wide consultations.

Smaller improvements would be to establish edge effects, reduce mowing, re-establish pond, remove shade from wet river edge, re-establish chalk bank with appropriate mowing.

It is also possible that the project to upgrade lighting along the adjacent roads will further reduce the night lighting in the park which would raise its importance for bats.

Community involvement opportunities:

Clean up events under Environment and Ecology team supervision to keep reed beds free of contaminants.

Participation in wildlife species surveys.

Biodiversity Statement

In order to improve the biodiversity on this site the following actions are recommended:

Most improvement would come from softening the river edge with management and expansion of small remnant reed bed.

However, this would be expensive and difficult.

Whilst complete pond restoration would need to overcome the difficulty of Environment Agency's records showing it as landfill (whereas we believe that the landfill is actually on either side), good improvement to the habitat could be achieved by removing enough of the silt to produce some open water.

Improving adjacent street lighting so that it spreads less into the park would improve the area for its protected bat species

Green Flag Feedback

If you would like to make any comments about this park or green space or would like to make specific suggestions and recommendations for the management plan, please complete this form or email comments to parksandstreetcleansing.services@southampton.gov.uk

Name of Park _____

Comments

If you would like to be involved in the ongoing development of this management plan and the park then please provide your contact details, which will be used solely for the purpose of contact with regards to your input into this park.

Your Name: _____





Please return this form FAO Nick Yeats, Parks and Street Cleansing, Civic Centre, Southampton, SO14 7LY