

# **Educational attainment 2012**

Varina Emblen: Senior Inspector  
Edd Shackleton: School's Data Analyst

September 2012

# Southampton Achieves

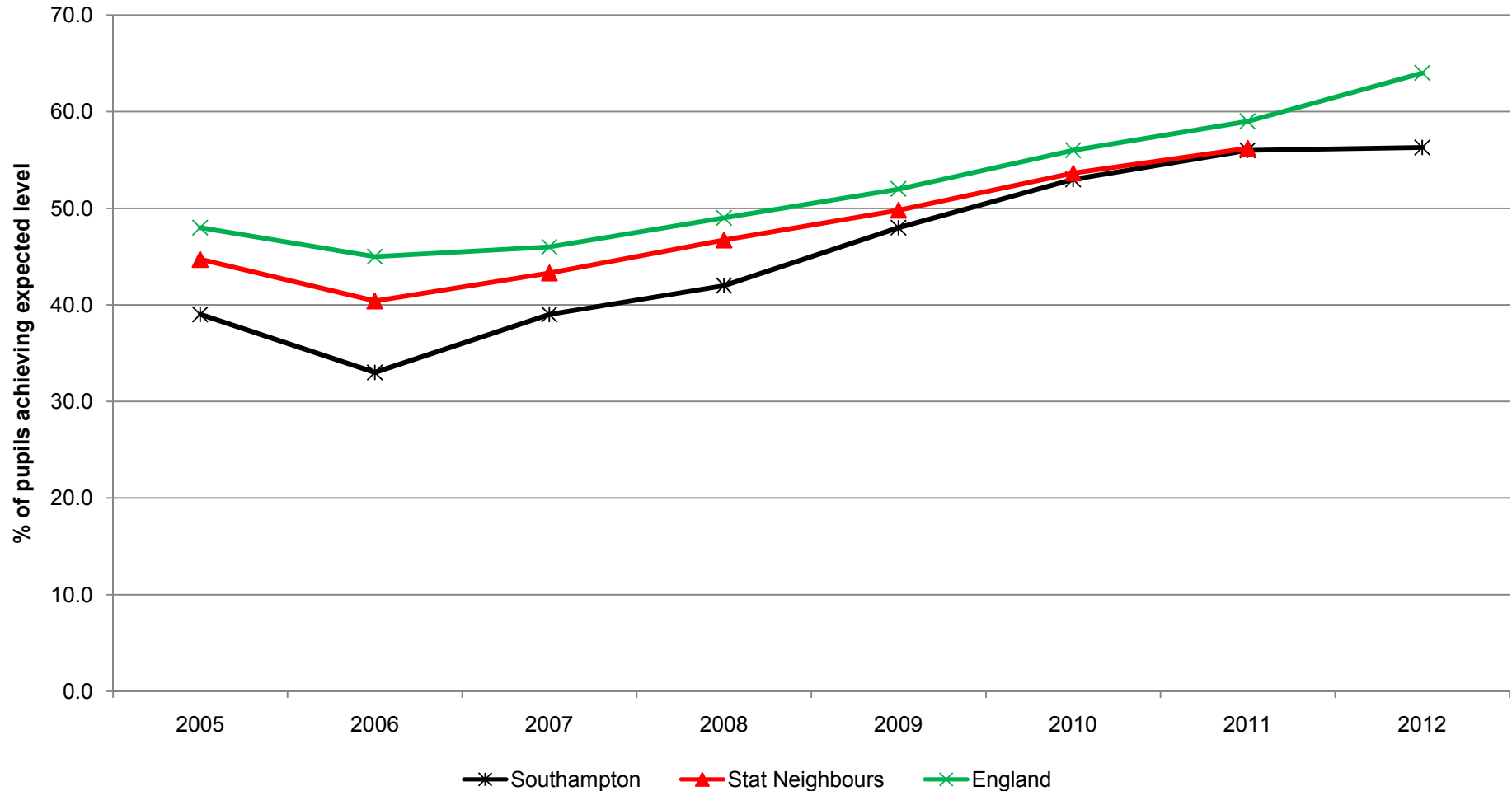
- Key Stage 1 - above or in line with the National average since 2010.
- Key Stage 2 - 13% improvement since 2009 and the second fastest improvement nationally out of 152 Local Authorities in 2011.
- Attainment for pupils in our most deprived areas well above the floor standard at Key Stage 2 at 72%.

# Southampton Achieves

- Key Stage 4 – 11% increase since 2009
- Key Stage 5 – closing the gap with National from 118.3 average points to 21.7
- Compared to similar Local Authorities, Southampton achieves

# Early Year Foundation Stage (EYFS)

**A good level of development** – 78 points across the foundation stage and 6+ in PSE & CLL



**A national improvement of 5% presents further challenge**

# Key Stage 1 Reading

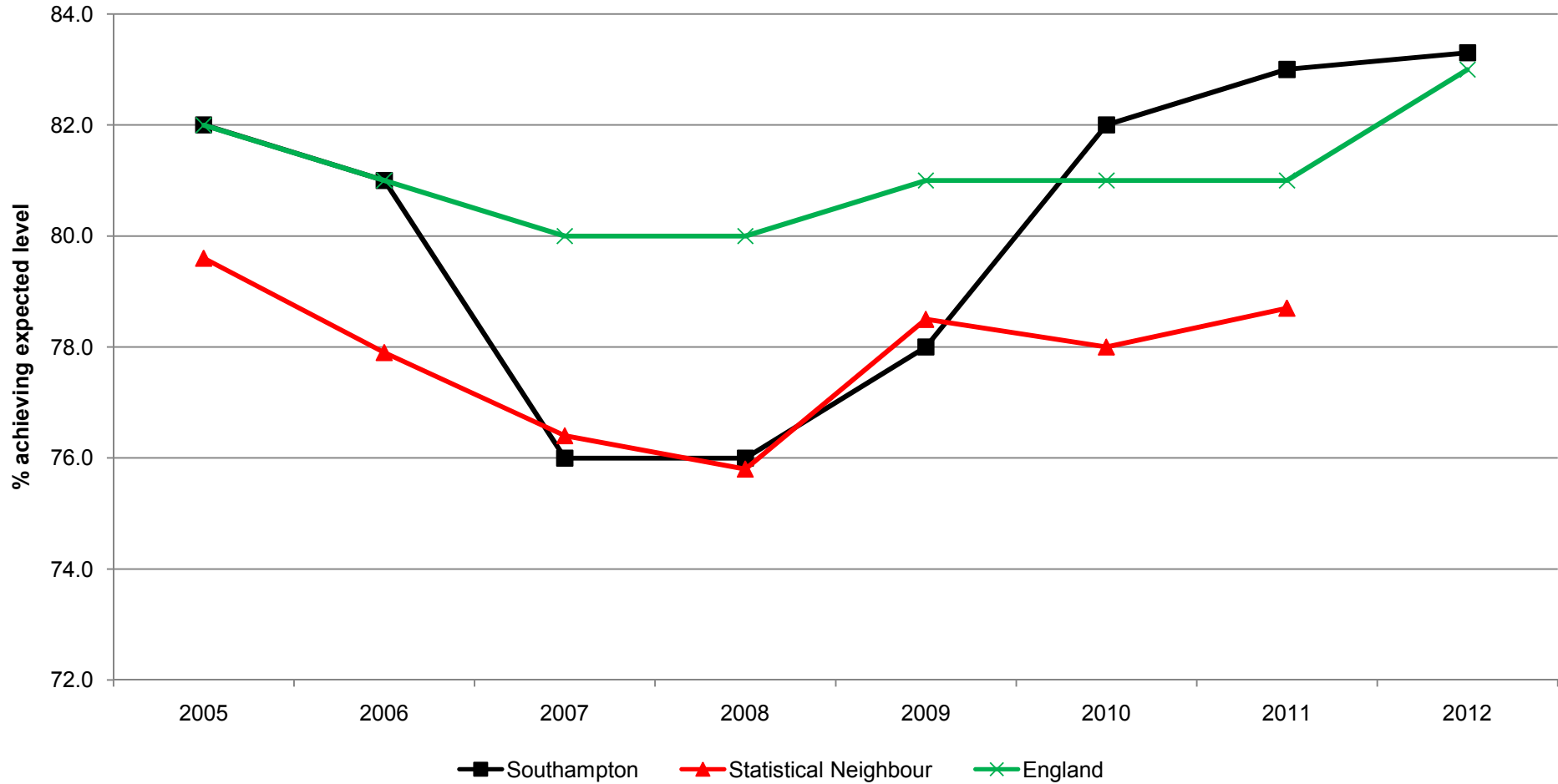
## % of pupils achieving Key Stage 1 Level 2+ Reading



**Reading outcomes are now broadly in line with national**

# Key Stage 1 Writing

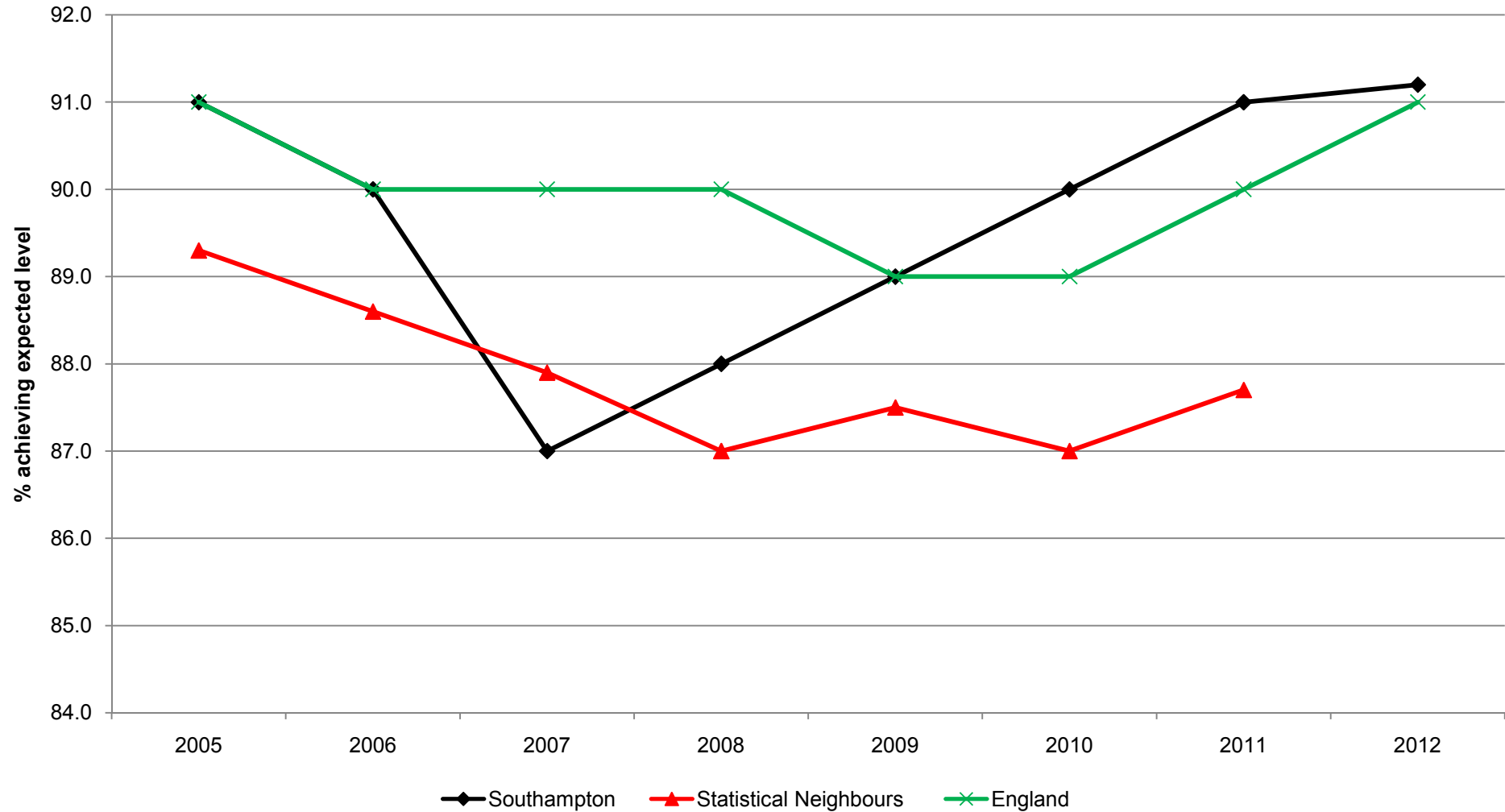
## % of pupils achieving Key Stage 1 Level 2+ Writing



**Writing is also now broadly in line with national**

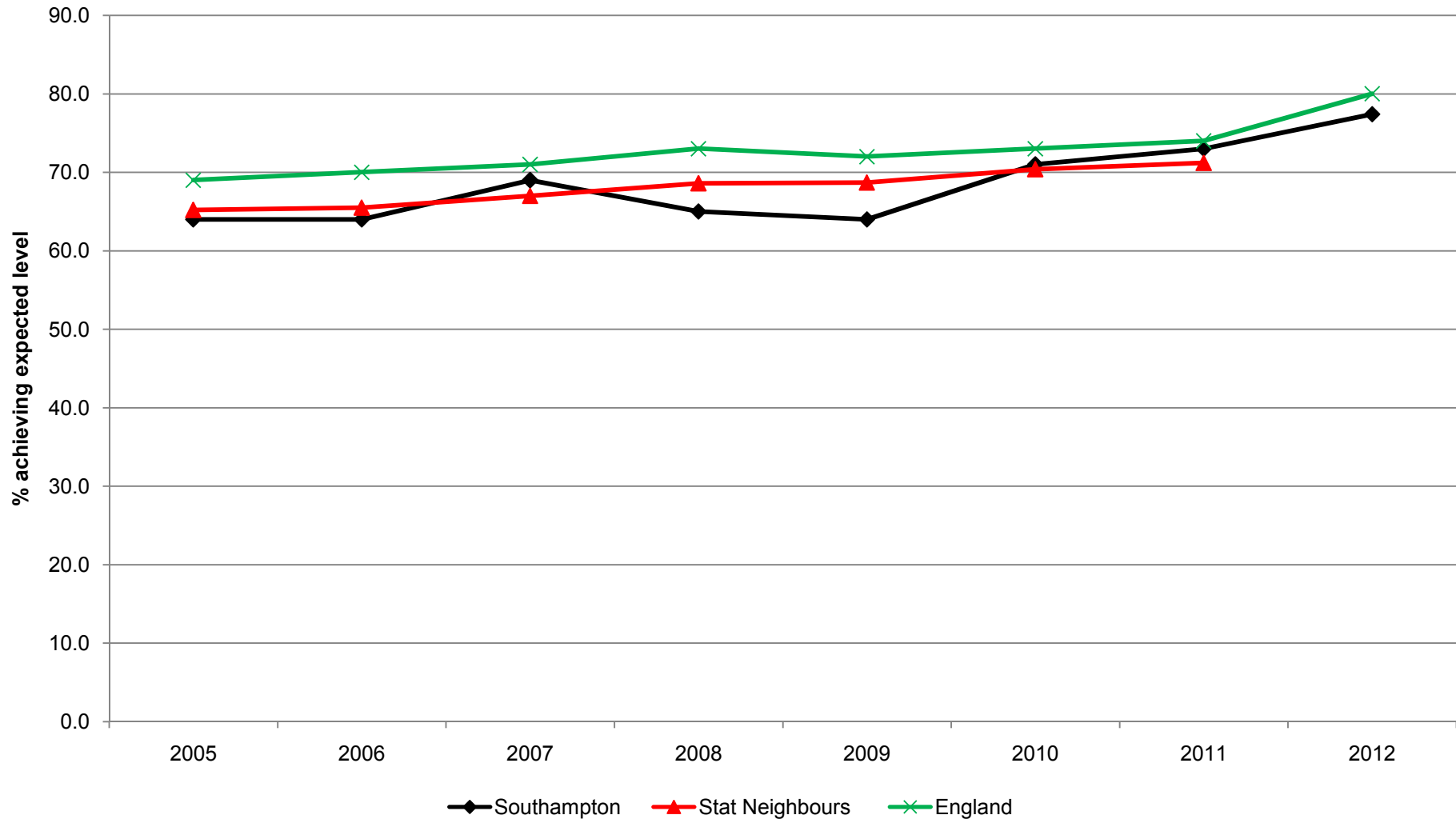
# Key Stage 1 Maths

## % of pupils achieving Key Stage 1 Level 2+ Maths



# Key Stage 2

## % of pupils achieving Key Stage 2 Level 4+ English and Maths



**A provisional improvement nationally of 6%.**

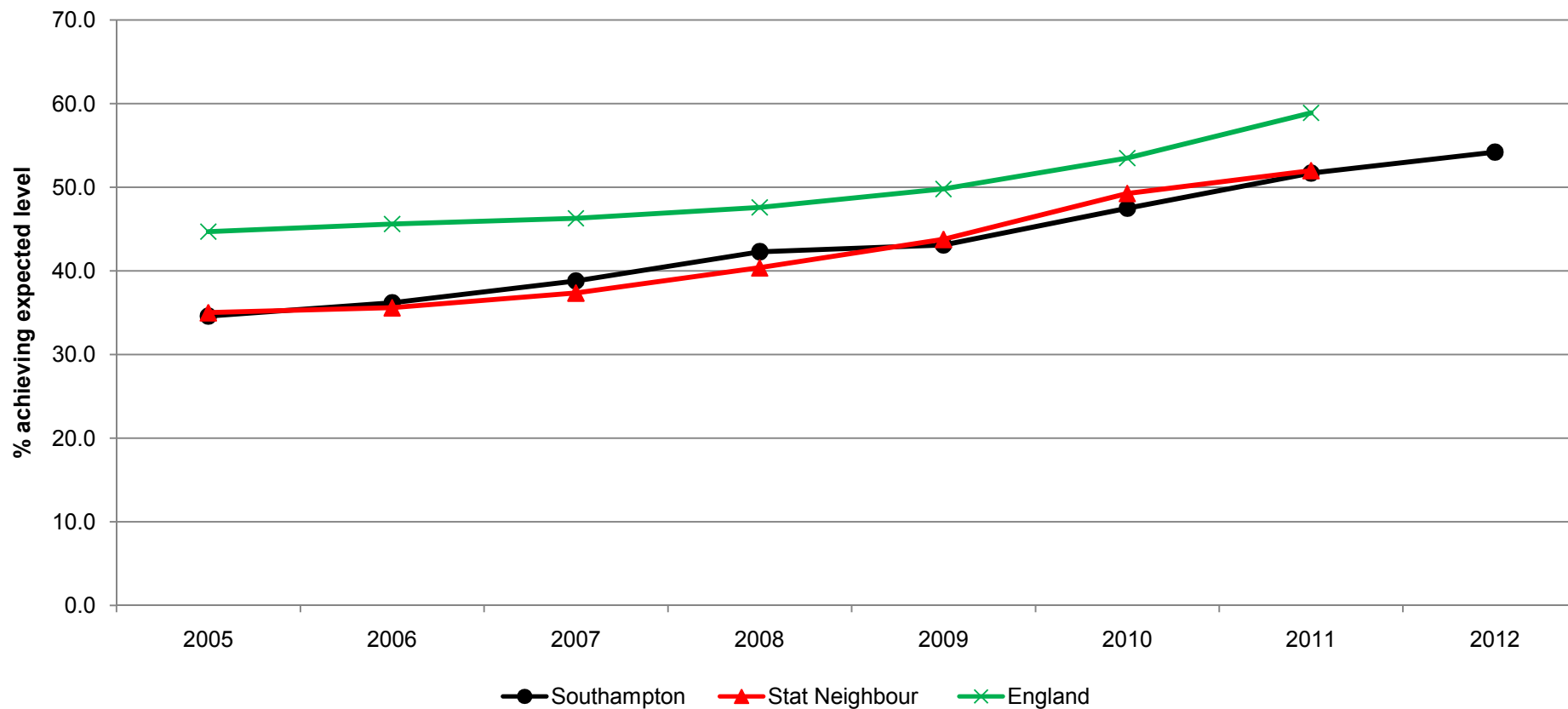


## How was this improvement achieved?

- Through a relentless focus on improving the quality of teaching and leadership
- Recognising that context *is* the context and not a barrier
- Comparing ourselves with contextually similar authorities, seeking out and learning from good practice
- Learning from the best within our schools and used to support schools to improve through school to school partnerships

# Key Stage 4

## % of pupils achieving 5 or more A\*-C grades including English and Maths GCSE



- **Between 2009 and 2012 Southampton achieved a 11.1% increase.**
- **Provisional data indicates a 2.5% to 54.2 in 2012.**
- **Currently National data is not available for comparison.**

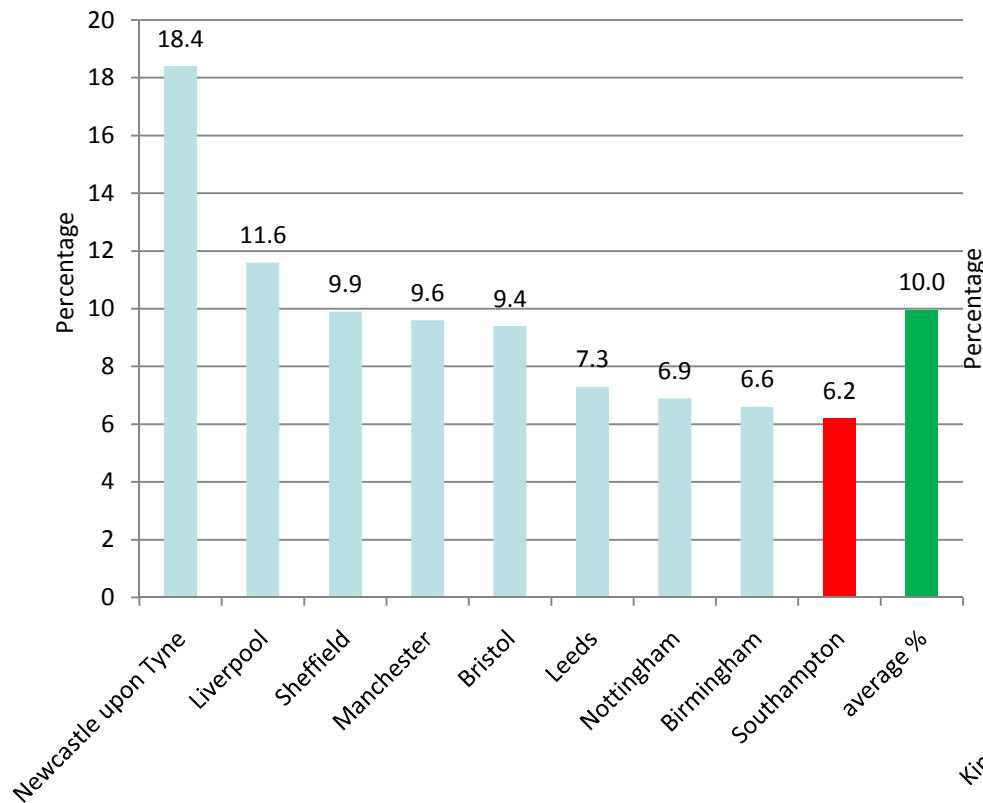
## Key Stage 5

- Post 16 - 97% of Southampton entrants achieved a pass at College or Sixth Form.
- 98% of A-level entries achieved a grade A\* to E which is in line with national
- 35% achieved an A\*-B grade. Nationally a pass rate of 52.6% was achieved.
- 3% of Southampton entries achieved an A-Level A\* grade in 2012.

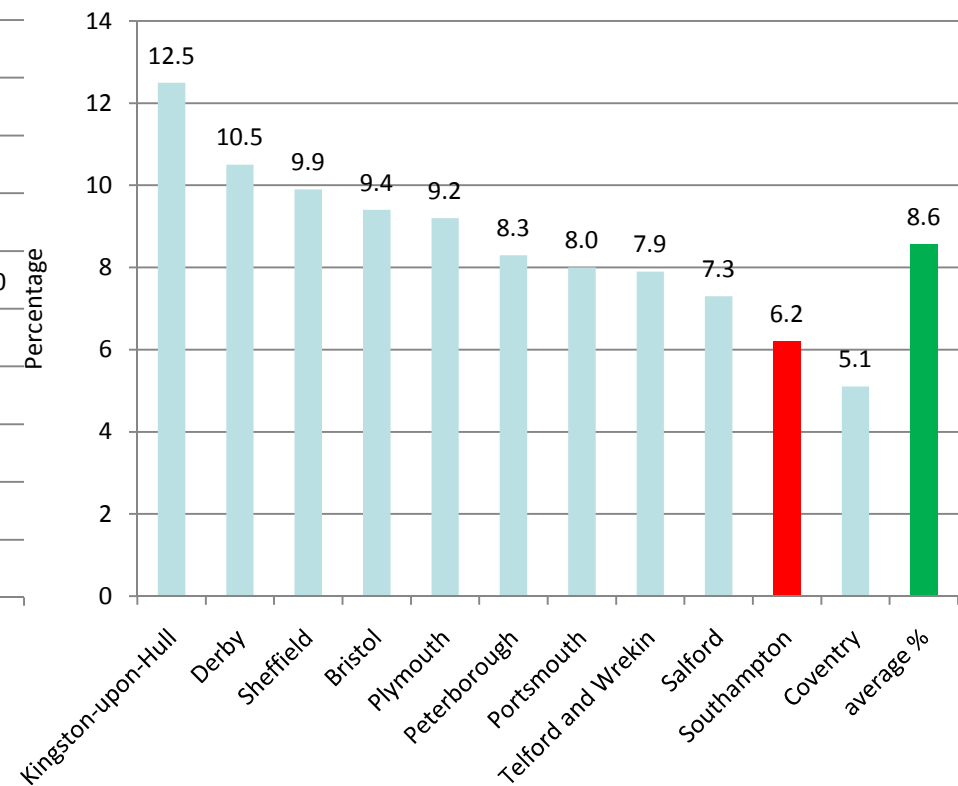
# Not in Employment, Education or Training (NEET) 2008-2012

- Between 2009 and 2012 Southampton NEETs have reduced to less than half, from 12.6% to 6.2%.
- Southampton NEETs in July 2012 are now below the National average of 6.3%.
- Partnership between City College, Wheatsheaf Trust, Southampton City Council, Princes Trust and City Limits.

NEET Core Cities - July 2012



NEET Statistical Neighbours - July 2012



# Future Challenges

- A changing estate of educational provision
- Attendance
- Shrinking local resources
- Every child or young person's entitlement to a 'Good' education

# Narrowing the Gap: Southampton vs. National

| Key Stage                    | Indicator  | 2011<br>Southampton | 2011<br>National | Southampton<br>- National | 2012<br>Southampton | 2012<br>National | Southampton<br>- National             | Change in Gap<br>to National<br>2011-2012 |
|------------------------------|--|---------------------|------------------|---------------------------|---------------------|------------------|---------------------------------------|---|
| Early Years Foundation Stage | A good level of development - 6+ in PSE & CLL with 78 points total | 56                  | 59               | -3                        | 57                  | 64               | -7                                    | -4  |
| Key Stage 1                  | Level 2+ Reading   | 86                  | 85               | 1                         | 87                  | 87               | 0                                     | -1  |
|                              | Level 2+ Writing   | 83                  | 81               | 2                         | 83                  | 83               | 0                                     | -2  |
|                              | Level 2+ Maths   | 91                  | 90               | 1                         | 91                  | 91               | 0                                     | -1  |
| Key Stage 2                  | Level 4+ English & Maths   | 73                  | 74               | -1                        | 77.3                | 79.6             | -2.3                                  | -1.3                                      |
| Key Stage 4                  | 5+ A*-C inc English & Maths  | 51.7                | 58.2             | -6.5                      | 54.2                |                  | Provisional data suggests a challenge |   |

# 2012 Targets

| Key Stage                    | Indicator  | 2012 Southampton | 2012 Target | 2012 National | Additional pupils required to meet 2012 Target | Additional pupils required to meet 2012 National   |
|------------------------------|--|------------------|-------------|---------------|--|--|
| Early Years Foundation Stage | A good level of development - 6+ in PSE & CLL with 78 points total | 57               | 67          | 64            | 269 pupils (10%)                               | 188 pupils (7%)  |
| Key Stage 1                  | Level 2+ Reading   | 87               | 91          | 87            | 96 pupils (4%)                                 | 0 pupils (0%)  |
|                              | Level 2+ Writing   | 83               | 88          | 83            | 120 pupils (5%)                                | 0 pupils (0%)  |
|                              | Level 2+ Maths   | 91               | 94          | 91            | 72 pupils (3%)                                 | 0 pupils (0%)  |
| Key Stage 2                  | Level 4+ English & Maths   | 77.3             | 82          | 79.6          | 96 pupils (4.7%)                               | 47 pupils (2.3%)   |
| Key Stage 4                  | 5+ A*-C inc English & Maths  | 54.2             | 62.5        |               | 160 pupils (8.3%)                              | The level of challenge to reach National is likely to be in excess of the Southampton Target |

## Education in Southampton – closing thoughts

- A trend of improvement but gaps widening
- Collaborations and partnerships effective but they need social capital
- Freedoms and autonomy but accountability needs to be assured



- A cultural shift in recent years, but danger that energies could be diverted
- Potential challenges in improving outcomes and opportunities – autonomy still requires checks and balances
- Collective clarity on how our joint actions lead to better outcomes and life prospects for learners of all ages, capabilities and starting points.

# Questions and Discussion

