

STREETSCAPE TOOL KIT

SOUTHAMPTON

Design Guidance for the Public Realm



Cover photo courtesy of G. P. Redman

Prepared on behalf of Southampton City Council by Balfour Beatty Living Places

January 2013

Inspiring Change

STREETSCAPE TOOL KIT 2013

Contents	Page Number
1 Aims and Objectives	1
2 Kit of Parts	3
3 Guidance Source for Carriageway & Footway Construction	21
4 Hierarchy of Streets	27
5 Conservation Areas	37
6 Standard Design Details	41
- Highways	42
- Street Furniture	77
- Drainage	96
- Traffic Systems	125

1

AIMS AND OBJECTIVES

The *Southampton Streetscape Manual* was approved in January 2005 and adopted as supplementary planning guidance in March 2006. It offered advice and guidance to those with a responsibility to improve, maintain or develop the public realm in Southampton. Working in conjunction with *Southampton City Centre Streets and Spaces Framework*, this document intends to build on the success of the original *Streetscape Manual* by encouraging a uniform approach to the design, specification, installation and maintenance, specific to the respective areas of the city's streetscape, whilst maintaining its unique historical assets and features.

The key principles of the *Streetscape Tool Kit* are firstly to offer guidance and continuity for future design in the city, whilst enhancing existing features and historical interests. Secondly, this document provides guidance on using high specification materials and ensuring they are installed correctly and informed decisions are made.

Additionally, this document will assist in the reduction of street clutter and ensure accessibility for all by pursuing tried and tested and/or innovative designs, which in turn will make the street environment a welcoming and safer place. Therefore this document should be used in conjunction with the Department for Transport's *Traffic Advisory Leaflet (TAL) 01/13 Reducing Sign Clutter* which sets out principles to minimise road signs and markings.

It is intended that the *Streetscape Tool Kit* will be used in partnership with *Southampton City Centre Streets and Spaces Framework* and *Manual for Streets 2* as the overarching design principles for Southampton's streets and public spaces.

Due to the diverse nature of the city and variety of materials used throughout, a 'one size fits all' approach is not suitable for the whole city. Primary public spaces such as the QE2 Mile and those in the Old Town, Civic Centre and Waterfront and District centres each have an individual character. Therefore this document is not intended to be completely prescriptive. Each site must be assessed on its own merit to ensure the design and choice of materials closely aligns with the overall goals of the city and for the specific area. Attention to detail is essential in achieving the finest finish and ensuring that the design quality negates excessive preventative measures such as bollards or too many road markings at all locations.

2

KIT OF PARTS

SURFACING



Product Name

Granite Kerb

Location to be used

Old Town, City Centre

Material

Solid Granite

Colour/Finish

Natural Silver Grey

Drawing Number

SD/1/1021

Note

Granite kerbs shall be re-laid in situ or re-used from existing stock. Due to the weight of these kerbs, mechanical lifting will normally be required.



Product Name

Charcon Conservation Kerb

Location to be used

City Centre

Material

Split stone reproduction of granite

Colour/Finish

Silver Grey

Drawing Number

SD/1/1011

Note

Due to the weight of these kerbs, mechanical lifting will normally be required.



Product Name

Accessible Bus Stop Kerb

Location to be used

Citywide

Material

Concrete

Colour/Finish

Neutral

Drawing Number

SD/1/1001, and SD1/1031



Product Name

Charcon Malvern Leemoor Flag

Location to be used

Primary Public Places

Material

Concrete

Colour/Finish

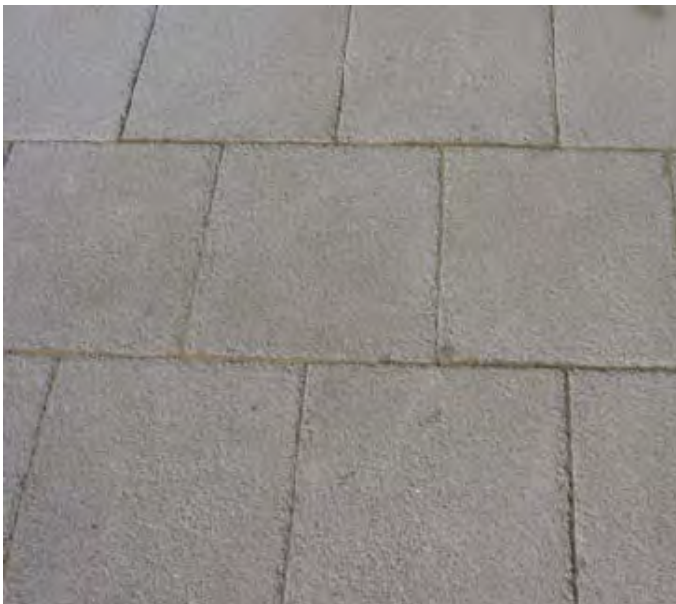
Leemoor Ground finish

Drawing Number

SD/1/1101, and SD/1/1104

Note

To be laid where surfaces have a gradient less than 1:20



Product Name

Charcon Malvern Andover Flag

Location to be used

Primary Public Places

Material

Concrete

Colour/Finish

Silver Grey Textured finish

Drawing Number

SD/1/1101, and SD/1/1104

Note

To be laid where surfaces have a gradient less than 1:20



Product Name

Marshalls Mistral Block

Location to be used

Primary Public Spaces

Material

Concrete

Colour/Finish

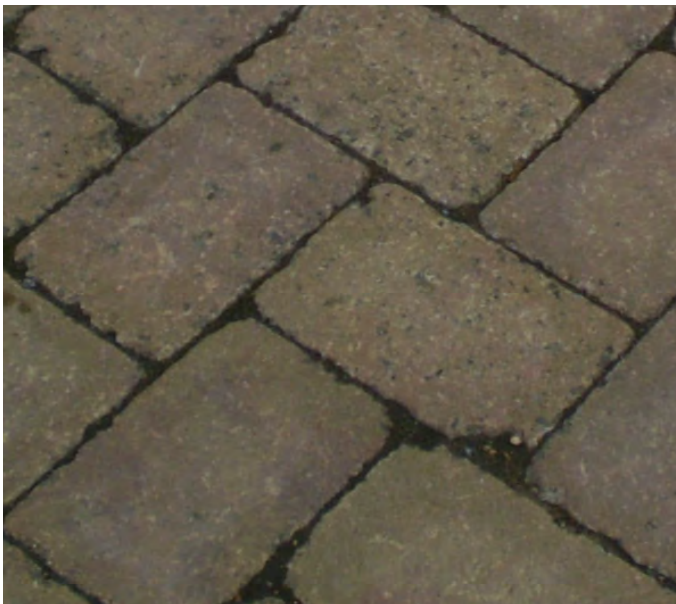
Specified by Designer

Drawing Number

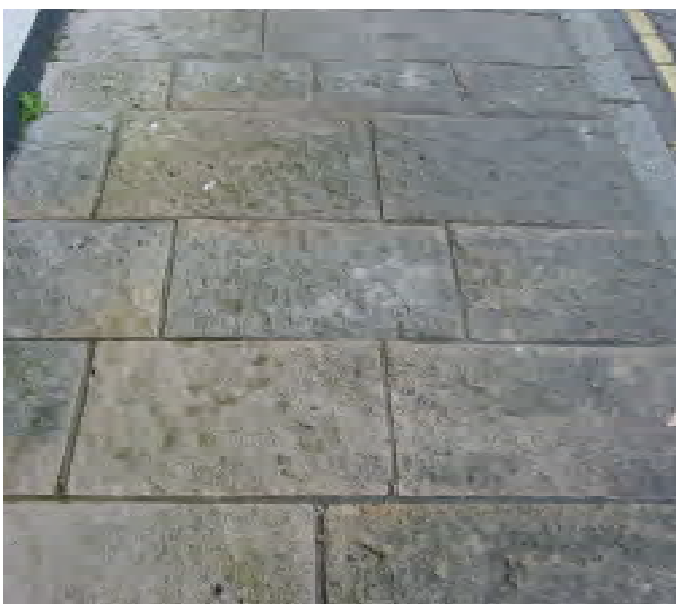
SD/1/1101, and SD/1/1104



Product Name
Charcon Parliament Block
Location to be used
Primary Public Places
Material
Concrete
Colour/Finish
Charcoal (200x100x80)
Drawing Number
SD/1101, and SD/1/1103



Product Name
Marshalls Tegula Sett
Location to be used
Primary Public Places
Material
Concrete
Colour/Finish
Specified by Designer
Drawing Number
SD/1101, and SD/1/1103



Product Name
Purbeck Stone
Location to be used
Old Town
Material
Natural Stone
Colour/Finish
Natural Colour, finish to be agreed
Drawing Number
SD/1/1161, and SD/1/1104



Product Name
Granite Slab
Location to be used
Primary Public Spaces
Material
Granite
Colour/Finish
Specified by Designer
Drawing Number
SD/1/1161, and SD/1/1104



Product Name
Flush Granite Kerb
Location to be used
Primary Public Spaces
Material
Granite
Colour/Finish
Specified by Designer
Drawing Number
SD/1/1161, and SD/1/1104



Product Name
Granite Blister Paving
Location to be used
Primary Public Spaces
Material
Granite
Colour/Finish
Natural
Drawing Number
SD/1/1111
Note
Laid in accordance with DfT 'Guidance on the use of Tactile Paving Surfaces'



Product Name

Blister Paving - Red

Location to be used

Citywide

Material

Concrete

Colour/Finish

Red with Blister finish

Drawing Number

SD/1/1111

Note

Laid in accordance with DfT 'Guidance on the use of Tactile Paving Surfaces'



Product Name

Blister Paving - Buff

Location to be used

Citywide

Material

Concrete

Colour/Finish

Buff with Blister finish

Drawing Number

SD/1/1111

Note

Laid in accordance with DfT 'Guidance on the use of Tactile Paving Surfaces'



Product Name

Bripave Recessed Cover and Frame

Location to be used

Primary Public Spaces- Citywide

Material

Galvanised steel

Colour/Finish

Natural

Drawing Number

Manufacturer Standard Detail



Product Name

Tree Pit

Location to be used

Primary Public Spaces

Material

Tiger Mulch cover layer

Colour/Finish

Specified by Designer

Drawing Number

To Be Specified By Designer



Product Name

Recessed Cover- Tree Pit

Location to be used

Primary Public Spaces

Material

Galvanised Steel

Colour/Finish

Natural

Drawing Number

To Be Specified By Designer

STREET FURNITURE



Product Name

Street Name Plate (Old Town) with QE2 Mile plaque

Location to be used

Old Town and QE2 Mile

Material

Mild steel front, aluminium back plates

Colour/Finish

Three tone vitreous enamel (with crest in Old Town)

Drawing Number

SD/1/3411B, and SD/1/3401

Note

To be mounted on walls when possible. Posts to be used where absolutely necessary.



Product Name

Street Name Plate

Location to be used

Citywide (except Old Town and QE2 Mile)

Material

Recycled Plastic

Colour/Finish

Three tone front plate. Southampton Bespoke Font

Drawing Number

SD/1/3411B, and SD/1/3401

Note

To be mounted on walls when possible. Posts to be used where absolutely necessary.



Product Name

Pedestrian Guard Rail

Location to be used

Citywide (not Old Town Or QE2 Mile)

Material

Galvanised Steel

Colour/Finish

Black, no detailing

Drawing Number

SD/1/3101



Product Name

Woodhouse Geo Balustrade

Location to be used

QE2 Mile

Material

316 Grade Stainless Steel

Colour/Finish

Polished, bead blasted and satin (240 grit brushed)

Drawing Number

SD/1/3101



Product Name

Glasdon Centuro Litter Bin

Location to be used

Citywide (not Old Town & QE2 Mile)

Material

Durapol body, zinc coated steel liner

Colour/Finish

Black smooth. No detail

Drawing Number

Manufacturer Standard Detail



Product Name

Glasdon Brunel Litter Bin

Location to be used

Old Town (not QE2 Mile)

Material

Durapo

Colour/Finish

Black smooth. Crest detail

Drawing Number

Manufacturer Standard Detail



Product Name

Southampton Stainless Steel Bin

Location to be used

QE2 Mile and Primary Public Spaces

Material

316 Marine Grade Stainless Steel

Colour/Finish

Brushed

Drawing Number

SD/1/3901



Product Name

Clear Channel Mitchell Bus Shelter

Location to be used

Citywide

Material

Aluminium, steel supports

Colour/Finish

Grey/white. Toughened glass

Drawing Number

Manufacturer Standard Detail



Product Name

Clear Channel Landmark Bus Shelter

Location to be used

QE2 Mile and Primary Public Spaces

Material

316 Grade Stainless Steel

Colour/Finish

Brushed

Drawing Number

Manufacturer Standard Detail

Note

Four roof designs are available. Only 'Bay' roof is specified. Shelter to be installed with a grey narrow seat without the advertisement panel in Primary Public Spaces



Product Name

Clear Channel Hamble Bus Shelter

Location to be used

Citywide (non-primary public places)

Material

Aluminium, steel supports

Colour/Finish

Grey/white. Toughened glass

Drawing Number

Manufacturer Standard Detail



Product Name

Truform Elite System Bus Stop post

Location to be used

Citywide

Material

Extruded Aluminium Body

Colour/Finish

Brushed with black plastic infill strip

Drawing Number

Manufacturer Standard Detail



Product Name

Bus Stop Post

Location to be used

Citywide

Material

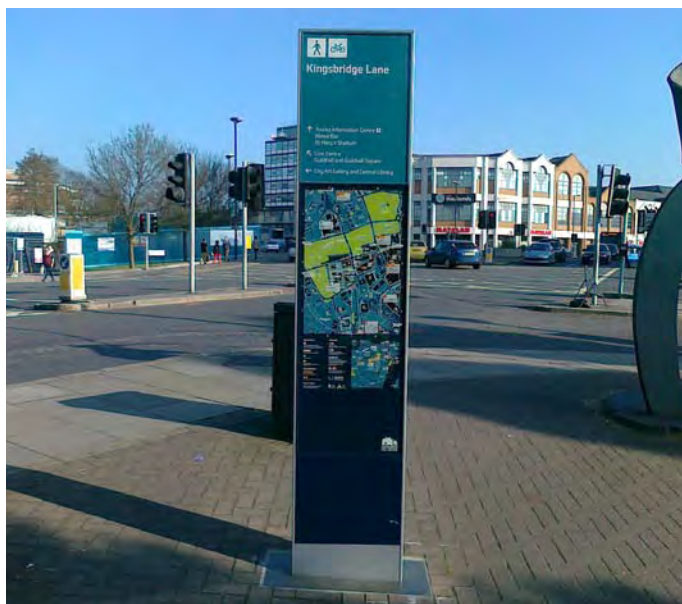
Galvanised Steel

Colour/Finish

Painted Black, Blue or Green

Drawing Number

SD/1/3501



Product Name

Legible City Sign

Location to be used

Citywide

Material

Vitreous Enamel

Colour/Finish

Teal. Polished finish

Drawing Number

Manufacturer Standard Detail



Product Name

Signstr8™ Signpost

Location to be used

Citywide

Material

Aluminium (QE2 Mile), Galvanised steel (citywide)

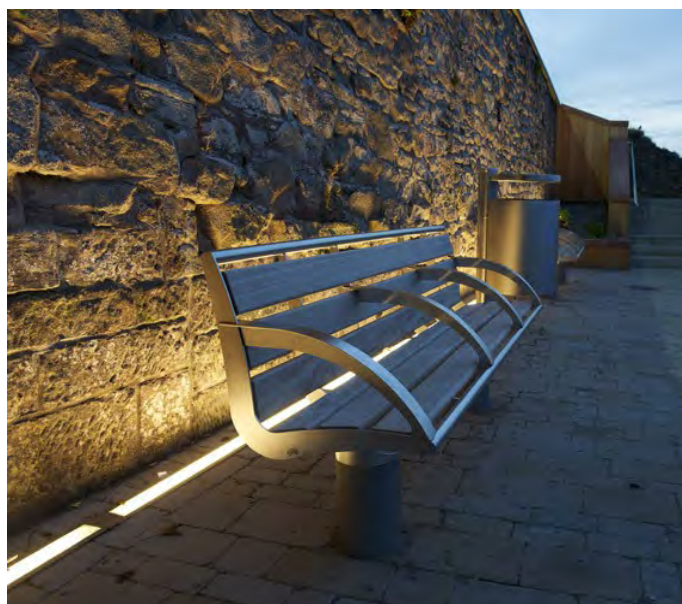
Colour/Finish

Brushed aluminium (QE2 Mile), Black (citywide).

One flat-sided side.

Drawing Number

SD/1/3501



Product Name

Woodhouse GEO Seat with arms

Location to be used

QE2 Mile and Primary Public Spaces

Material

316 grade stainless steel frame

Colour/Finish

Iroko Hardwood slats

Drawing Number

Manufacturer Standard Detail



Product Name

Vekso Comfort with arms PB3001A

Location to be used

Citywide (not QE2 Mile or Primary Public spaces)

Material

Galvanised frame, hardwood slats

Colour/Finish

Black powder coated, oil treated slats

Drawing Number

Manufacturer Standard Detail



Product Name

Waisted Bollard

Location to be used

Highway Locations citywide (not QE2 Mile or Old Town)

Material

Galvanised steel body

Colour/Finish

Painted black, blue, green (14C39), or yellow.

Drawing Number

SD/1/3201

Note

Red and white 'ScotchLite' reflective tape must be used to form a contrasting strip within the waist. Bollards should only be used where absolutely necessary



Product Name

Manchester Bollard

Location to be used

Old Town (not QE2 Mile)

Material

Cast Iron body

Colour/Finish

Black

Drawing Number

SD/1/3201



Product Name

Woodhouse GEO Bollard

Location to be used

QE2 Mile and Primary Public Spaces

Material

316 marine grade stainless steel

Colour/Finish

Electro polished and 240 grit brushed

Drawing Number

SD/1/3201



Product Name

Dragon's Teeth

Location to be used

Citywide

Material

Round Softwood Post

Colour/Finish

100mm treated

Drawing Number

SD/1/3201



Product Name

TMP Heritage Solalite® Bollard

Location to be used

Citywide (Pedestrian Refuge) where necessary

Material

Vacuum Formed Polypropylene

Colour/Finish

Fluorescent yellow

Drawing Number

SD/1/3214



Product Name

Broxap Bell Shaped Bollard

Location to be used

Citywide to prevent vehicle over-run

Material

Cast iron

Colour/Finish

Black

Drawing Number

SD/1/3214



Product Name

Cycle/Pedestrian Bollard

Location to be used

Citywide

Material

316 grade stainless steel

Colour/Finish

brushed

Drawing Number

SD/1/3801



Product Name

Sheffield Cycle Stand

Location to be used

Citywide

Material

316 grade stainless steel

Colour/Finish

Polished

Drawing Number

SD/1/3601



Product Name

Cabinet Base Column 01

Location to be used

Citywide (not QE2 Mile)

Material

Hot dip galvanised steel

Colour/Finish

Polyester powder coat or painted black

Drawing Number

SD/1/3701



Product Name

Cabinet Base Column 02

Location to be used

QE2 Mile and Primary Public Spaces

Material

316 grade stainless steel

Colour/Finish

Polished

Drawing Number

SD/1/3701



Product Name

WRTL Libra Performa Lantern

Location to be used

Residential Roads

Material

Galvanised Steel, 6m columns

Colour/Finish

36-55w PLL Lamp

Drawing Number

Manufacturer Standard Detail



Product Name

Philips Iridium Lantern

Location to be used

Main and Secondary Distributor Roads

Material

Galvanised Steel, 8,10,12m columns

Colour/Finish

90-140w Cosmopolis Lamp

Drawing Number

Manufacturer Standard Detail



Product Name

Siemens Helios Signal Head

Location to be used

Citywide

Material

Galvanised steel circular section post

Colour/Finish

Black, mounted on black post

Drawing Number

SD/1/5010, and SD/1/5005



Product Name

Parkeon Strada Rapide

Location to be used

Citywide

Material

Galvanised steel body

Colour/Finish

Black powder coated. Solar powered.

Drawing Number

Manufacturer Standard Detail



Product Name

Double Yellow Lines

Location to be used

Citywide

Material

Thermoplastic

Colour/Finish

BS381C/310 (BS381C/355 or BS381C/309 to be used outside of schools. Width of 50mm

Drawing Number

DfT Diagram 1018.1



Product Name

Cycle and Pedestrian Shared Route Sign

Location to be used

Citywide

Material

Thermoplastic (Imprint)

Colour/Finish

Blue with White Border

Drawing Number

TSRGD Sign No.956

3

**GUIDANCE SOURCE FOR CARRIAGEWAY
& FOOTWAY CONSTRUCTION**

GUIDANCE SOURCES FOR CARRIAGEWAY CONSTRUCTION

Material thicknesses and laying temperatures	<i>British Standards- Asphalt for roads and other paved areas. Specification for transport, laying, compaction and type testing protocols</i>
General requirements and properties of the aggregates used in bituminous mixtures	<i>DfT- Manual of Contract Documents for Highway Works (MCHW)- Volume 1- Specification for Highway Works- Series 900- Road Pavements- Bituminous Bound Materials</i>
Designing road pavement foundations	<i>DfT- Interim Advice Note 73/06- Revision 1 (2009). Design Guidance for Road Pavement Foundations (Draft HD25).</i>
CBR Design Requirements	<i>TRL- The Structural Design of Bituminous Roads</i>
Guidance on Density, Dynamic Cone Penetrometer, Plate Bearing and Springbox testing methods	<i>DfT- Design Manual for Roads and Bridges (DMRB)- Interim Advice Note 73/06 Revision 1 (2009) and HD30/08 .</i>
Where the specified testing of PSV can be undertaken by a certified testing laboratory	<i>British Standards- Tests for mechanical and physical properties of aggregates. Determination of the polished stone value. BS EN 1097-8: 2009.</i>
AAV and PSV values	<i>DfT- i) Design Manual for Roads and Bridges (DMRB) (7:3)(1:HD28/04) Skid Resistance, ii) Design Manual for Roads and Bridges (DMRB) (7:5) (1:HD36/06) Surfacing materials for New and Maintenance Construction</i>
Transportation, temperature, laying, compaction, and testing of HRA, SMA, and asphalt concrete mixtures	<i>British Standards- i) Bituminous mixtures. Material specifications. Hot Rolled Asphalt, ii) Bituminous mixtures. Material specifications. Stone mastic asphalt, iii) Bituminous mixtures. Material specifications. Asphalt Concrete, iv) Asphalt for roads and other paved areas. Specification for transport, laying, compaction and type testing protocols, v) Sampling and examination of bituminous mixtures for roads and other paved areas. Methods for determination of the condition of the binder on coated chippings and for measurement of the rate of spread of coated chippings, vi) Bituminous mixtures. Test methods for hot mix asphalt. DfT- Manual of Contract Documents for Highway Works (MCHW)- Volume 1- Specification for Highway Works- Series 900- Road Pavements- Bituminous Bound Materials.</i>
Guidance and specification on Thin Surface Course Systems	<i>DfT- i) Interim Advice Note 157/11- Thin Surface Course Systems. Installation and Maintenance, ii) Manual of Contract Documents for Highway Works (MCHW)- Volume 1- Specification for Highway Works- Series 900- Road Pavements- Bituminous Bound Materials.</i>
Guidance for surface dressings	<i>TRL- Design Guide for Road Surface Dressing, DfT- Design Manual for Roads and Bridges (DMRB) (7:5)(2:HD37/99) Bituminous Surfacing Materials and Techniques.</i>

Guidance for micro asphalt surface treatments

British Standards- Slurry Surfacing Requirements, DfT- Manual of Contract Documents for Highway Works (MCHW)- Volume 1- Specification for Highway Works- Series 900- Road Pavements- Bituminous Bound Materials.

Maintenance requirements of concrete road designs

British Standards- Concrete pavements. Functional requirements for concrete pavements.

Sealing transverse and longitudinal joints on concrete carriageway

DfT- Manual of Contract Documents for Highway Works (MCHW)- Volume 1- Specification for Highway Works- Series 700- Road Pavements- General.

GUIDANCE SOURCES FOR FOOTWAY CONSTRUCTION

Design and Construction	<i>DfT- Design Manual for Roads and Bridges (DMRB) (7:2)(5:HD39/01) Footway Design.</i>
Pre-cast concrete slabs, pavers and asphalt mixtures for footway construction	<i>British Standards- i) Bituminous mixtures. Material specifications. Hot Rolled Asphalt, ii) Bituminous mixtures. Material specifications. Stone mastic asphalt, iii) Bituminous mixtures. Material specifications. Asphalt Concrete, iv) Sampling and examination of bituminous mixtures for roads and other paved areas. Methods for determination of the condition of the binder on coated chippings and for measurement of the rate of spread of coated chippings, v) Bituminous mixtures. Test methods for hot mix asphalt, vi) Asphalt for roads and other paved areas. Specification for transport, laying, compaction and type testing protocols.</i>
Pre-cast concrete blocks and clay pavers	<i>British Standards- i) Concrete paving flags. Requirements and test methods, ii) Pavements constructed with clay, natural stone or concrete pavers. Code of practice for laying precast concrete paving blocks and clay pavers for flexible pavements.</i>
Natural stone footway construction	<i>British Standards- i) Slabs of natural stone for external paving. Requirements and test methods, ii) Pavements constructed with clay, natural stone or concrete pavers. Code of practice for the construction of pavements of precast concrete flags or natural stone slabs, iii) Aggregates for Concrete.</i>
Joints- laying course & jointing sand	<i>British Standards- i) Pavements constructed with clay, natural stone or concrete pavers. Code of practice for the construction of pavements of natural stone paving units and cobbles, and rigid construction with concrete block paving, ii) Pavements constructed with clay, natural stone or concrete pavers. Code of practice for the construction of rigid pavements of clay paver, iii) Pavements constructed with clay, natural stone or concrete pavers. Guide for the structural design of trafficked pavements constructed of natural stone setts and bound construction with concrete paving blocks.</i>
Pre-cast concrete kerbs	<i>British Standards- i) Precast concrete flags, kerbs, channels, edgings and quadrants. Specification, ii) Concrete kerb units. Requirements and test methods, iii) Pavements constructed with clay, natural stone or concrete pavers. Code of practice for the construction of pavements of natural stone paving units and cobbles, and rigid construction with concrete block paving, iv) Pavements constructed with clay, natural stone or concrete pavers. Code of practice for the construction of rigid pavements of clay pavers, v) Pavements constructed with clay, natural stone or concrete pavers. Guide for the structural design of trafficked pavements constructed of natural stone setts and bound construction with concrete paving blocks.</i>

GUIDANCE SOURCES FOR LANDSCAPING AND STREET TREES

Guidance for landscaping and tree choice *British Standards- Code of practice for general landscape operations (excluding hard surfaces)*

Guidance for soil types for landscaping *British Standards- Specification for topsoil and requirements for use*

4

HIERARCHY OF STREETS

Primary City Centre Public Places

Street Name	Hierarchical Level	Street Furniture Colour	Paving
Bargate	1	Silver/Grey	Purbeck or similar approved
City Centre Parks	1	Black	Asphalt
Central Station	1	Silver/Grey	Malvern Leemoor
Civic Centre	1	Silver/Grey	Malvern Leemoor
Guildhall Square	1	Silver/Grey	Malvern Leemoor or similar approved
QE2 Mile (north of Bargate)	1	Silver/Grey	Malvern Leemoor
QE2 Mile (south of Bargate)	1	Silver/Grey	Purbeck or similar approved
Old Town (not QE2 Mile)	1	Black	Purbeck
Town Quay (southern side)	1	Black	Malvern Leemoor
Town Quay (northern side)	1	Black	Purbeck
Bedford Place	1	Black	Malvern Leemoor
East Street (west of Queensway)	1	Black	Purbeck or similar approved
Ocean Village	1	Black	Malvern Leemoor

Streets Classified as Hierarchical Level 1 and 2

Street Name	Hierarchical Level	Street Furniture Colour	Paving
Above Bar Street	1	Silver/Grey	Purbeck
Albert Road North	1	Black	Malvern Leemoor
Albion Place	1	Black	Purbeck
Amoy Street	2	Black	Malvern Leemoor
Anderson's Road	2	Black	Malvern Leemoor
Anglesea Terrace	2	Black	Malvern Leemoor
Asylum Road	2	Black	Malvern Leemoor
Back of the Walls	1	Black	Purbeck or similar approved
Bargate Street (northern side)	1	Black	Malvern Leemoor
Bargate Street (southern side)	1	Silver/Grey	Purbeck
Bedford Place	2	Black	Malvern Leemoor
Bellevue Road	2	Black	Malvern Leemoor
Bernard Street East	2	Black	Malvern Leemoor
Bernard Street West	1	Black	Purbeck
Blechynden Terrace	1	Silver/Grey	Malvern Leemoor
Briton Street	1	Black	Purbeck
Brunswick Place	2	Black	Malvern Leemoor
Brunswick Square	2	Black	Malvern Leemoor
Bugle Street	1	Black	Purbeck
Canal Walk	1	Black	Purbeck

Canton Street	2	Black	Malvern Leemoor
Canute Road	2	Black	Malvern Leemoor
Carlton Crescent	2	Black	Malvern Leemoor
Carlton Place	2	Black	Malvern Leemoor
Castle Lane	1	Black	Purbeck
Castle Square	1	Black	Purbeck
Castle Way	1	Black	Purbeck
Cement Terrace	1	Black	Purbeck
Central Bridge	2	Black	Malvern Leemoor
Chantry Road	2	Black	Malvern Leemoor
Chapel Road	2	Black	Malvern Leemoor
Charles Street	2	Black	Malvern Leemoor
Charlotte Place	2	Black	Malvern Leemoor
Civic Centre Road	1	Silver/Grey	Malvern Leemoor
College Street	2	Black	Malvern Leemoor
Commercial Rd (E)	2	Silver/Grey	Malvern Leemoor
Commercial Rd(W)	2	Black	Malvern Leemoor
Crosshouse Road	2	Black	Malvern Leemoor
Cumberland Place	2	Black	Malvern Leemoor
Devonshire Road	2	Black	Malvern Leemoor
Duke Street	2	Black	Malvern Leemoor
East Bargate	1	Silver/Grey	Purbeck

East Park Terrace	2	Black	Malvern Leemoor
East Street (east)	2	Black	Malvern Leemoor
East Street (west)	1	Black	Purbeck
Eastgate Street	1	Black	Purbeck
Elm Terrace	2	Black	Malvern Leemoor
Endle Street	2	Black	Malvern Leemoor
Floating Bridge Rd	2	Black	Malvern Leemoor
Forest View	1	Black	Purbeck
Four Post Hill	2	Black	Malvern Leemoor
French Street	1	Black	Purbeck
Gantry	2	Black	Malvern Leemoor
Gibbs Road	2	Black	Malvern Leemoor
Gloucester Square	1	Black	Purbeck
Grosvenor Square	2	Black	Malvern Leemoor
Hamton Street	1	Black	Purbeck
Handford Place	2	Black	Malvern Leemoor
Hanover Buildings (north- ern side)	1	Black	Malvern Leemoor
Hanover Buildings (south- ern side)	1	Black	Purbeck
Harbour Parade	2	Black	Malvern Leemoor
Havelock Road	1	Silver/Grey	Malvern Leemoor
Herbert Walker Avenue	2	Black	Malvern Leemoor
High Street	1	Silver/Grey	Purbeck

Hill Lane	2	Black	Malvern Leemoor
Houndwell Place	2	Black	Malvern Leemoor
Itchen Bridge	2	Black	Malvern Leemoor
John Street	2	Black	Malvern Leemoor
Kings Park Road	2	Black	Malvern Leemoor
Kingsbridge Lane	1	Silver/Grey	Malvern Leemoor
Kingsway	2	Black	Malvern Leemoor
Lansdowne Hill	1	Black	Purbeck
Latimer Street	2	Black	Malvern Leemoor
Lime Street	2	Black	Malvern Leemoor
London Road	2	Silver/Grey	Malvern Leemoor
Lower Canal Walk	1	Black	Purbeck
Madison Street	1	Black	Purbeck
Maritime Walk	2	Black	Malvern Leemoor
Market Place	1	Black	Purbeck
Marsh Lane	2	Black	Malvern Leemoor
Maryfield	2	Black	Malvern Leemoor
Millbrook Road East (part)	2	Black	Malvern Leemoor
Morris Road	2	Black	Malvern Leemoor
Mountbatten Way	2	Black	Malvern Leemoor
Neptune Way	2	Black	Malvern Leemoor
New Road	2	Black	Malvern Leemoor

North Front	2	Black	Malvern Leemoor
Ocean Way	2	Black	Malvern Leemoor
Ogle Road	2	Black	Malvern Leemoor
Orchard Lane	2	Black	Malvern Leemoor
Orchard Place	2	Black	Purbeck
Ordnance Road	2	Black	Malvern Leemoor
Oriental Terrace	1	Black	Purbeck
Oxford Street	2	Black	Malvern Leemoor
Paget Street	2	Black	Malvern Leemoor
Palmerston Road	2	Black	Malvern Leemoor
Park Walk	2	Black	Malvern Leemoor
Pirelli Street	2	Black	Malvern Leemoor
Platform Road	2	Black	Malvern Leemoor
Polygon, The	2	Black	Malvern Leemoor
Porters Lane	1	Black	Purbeck
Portland Street	2	Black	Malvern Leemoor
Portland Terrace	2	Black	Malvern Leemoor
Pound Tree Road	2	Black	Malvern Leemoor
Queen's Terrace	2	Black	Malvern Leemoor
Queensway (eastern side)	2	Black	Malvern Leemoor
Queensway (western side)	1	Black	Purbeck
Richmond Street	2	Black	Malvern Leemoor

Royal Crescent Road	2	Black	Malvern Leemoor
Salisbury Street	2	Black	Malvern Leemoor
Saltmarsh Road	2	Black	Malvern Leemoor
Scullards Lane	2	Black	Malvern Leemoor
Shirley Road	2	Black	Malvern Leemoor
Simnel Street	1	Black	Purbeck
Six Dials	2	Black	Malvern Leemoor
Solent Road	2	Black	Malvern Leemoor
South Front	2	Black	Malvern Leemoor
Southampton Street	2	Black	Malvern Leemoor
Southbrook Road	2	Black	Malvern Leemoor
Southern Road	2	Black	Malvern Leemoor
St Andrews Road	2	Black	Malvern Leemoor
St Marys Place	2	Black	Malvern Leemoor
St Marys Street	2	Black	Malvern Leemoor
St Michaels Square	1	Black	Purbeck
St Michaels Street	1	Black	Purbeck
Strand, The	1	Black	Purbeck or similar approved
Sussex Road	2	Black	Malvern Leemoor
Terminus Terrace	2	Black	Malvern Leemoor
Threefield Lane	2	Black	Malvern Leemoor
Town Quay (northern side)	1	Black	Purbeck

Town Quay (southern side)	1	Black	Malvern Leemoor
Upper Banister Road	2	Black	Malvern Leemoor
Upper Bugle Street	1	Black	Purbeck
Vincent's Walk	2	Black	Malvern Leemoor
Vyse Lane	1	Black	Purbeck
Waterloo Terrace	2	Black	Malvern Leemoor
West Bargate	1	Silver/Grey	Purbeck
West Marlands Road	2	Black	Malvern Leemoor
West Park Road	2	Black	Malvern Leemoor
West Quay Road	2	Black	Malvern Leemoor
West Street	1	Black	Purbeck
Western Esplanade (Old Town)	1	Black	Purbeck
Western Esplanade	1	Black	Malvern Leemoor
Westgate Street	1	Black	Purbeck
Winchester Street	2	Black	Malvern Leemoor
Windsor Terrace	2	Black	Malvern Leemoor
Winkle Street	1	Black	Purbeck
Wyndham Place	1	Silver/Grey	Malvern Leemoor
York Buildings	1	Black	Purbeck
York Walk	1	Black	Purbeck

Other Locations	Hierarchical Level	Street Furniture Colour	Paving
All Other City Streets (non-primary public places)	3, 4, and 5	Black	Asphalt or similar approved

N.B:- The classification of all Southampton streets is being assessed in 2013. An updated list will be included in future editions of the Streetscape Tool Kit

Town (T) and District Centres (DC)

Bitterne (DC)	Bespoke street furniture colour and paving as approved
Lords Wood & Lords Hill (DC)	Bespoke street furniture colour and paving as approved
Portswood (DC)	Bespoke street furniture colour and paving as approved
Shirley (T)	Bespoke street furniture colour and paving as approved
Woolston (DC)	Bespoke street furniture colour and paving as approved

5

CONSERVATION AREAS

Conservation Areas

Bassett Green Village	Bespoke street furniture colour and paving as approved
Canute Road	Bespoke street furniture colour and paving as approved
Carlton Crescent	Bespoke street furniture colour and paving as approved
Cranbury Place	Bespoke street furniture colour and paving as approved
Ethelburt Avenue	Bespoke street furniture colour and paving as approved
Itchen Valley	Bespoke street furniture colour and paving as approved
Oakmount Triangle	Bespoke street furniture colour and paving as approved
Old Town North	Bespoke street furniture colour and paving as approved
Old Town West	Bespoke street furniture colour and paving as approved
Old Town South	Bespoke street furniture colour and paving as approved
Old Woolston 1	Bespoke street furniture colour and paving as approved
Old Woolston 2	Bespoke street furniture colour and paving as approved
Old Woolston 3	Bespoke street furniture colour and paving as approved
Old Woolston 4	Bespoke street furniture colour and paving as approved
Oxford Street	Bespoke street furniture colour and paving as approved
Portswood Residents' Gardens	Bespoke street furniture colour and paving as approved
St Annes Road	Bespoke street furniture colour and paving as approved
St James' Road	Bespoke street furniture colour and paving as approved
The Avenue	Bespoke street furniture colour and paving as approved
Uplands Estate	Bespoke street furniture colour and paving as approved

MAP OF CONSERVATION AREAS

