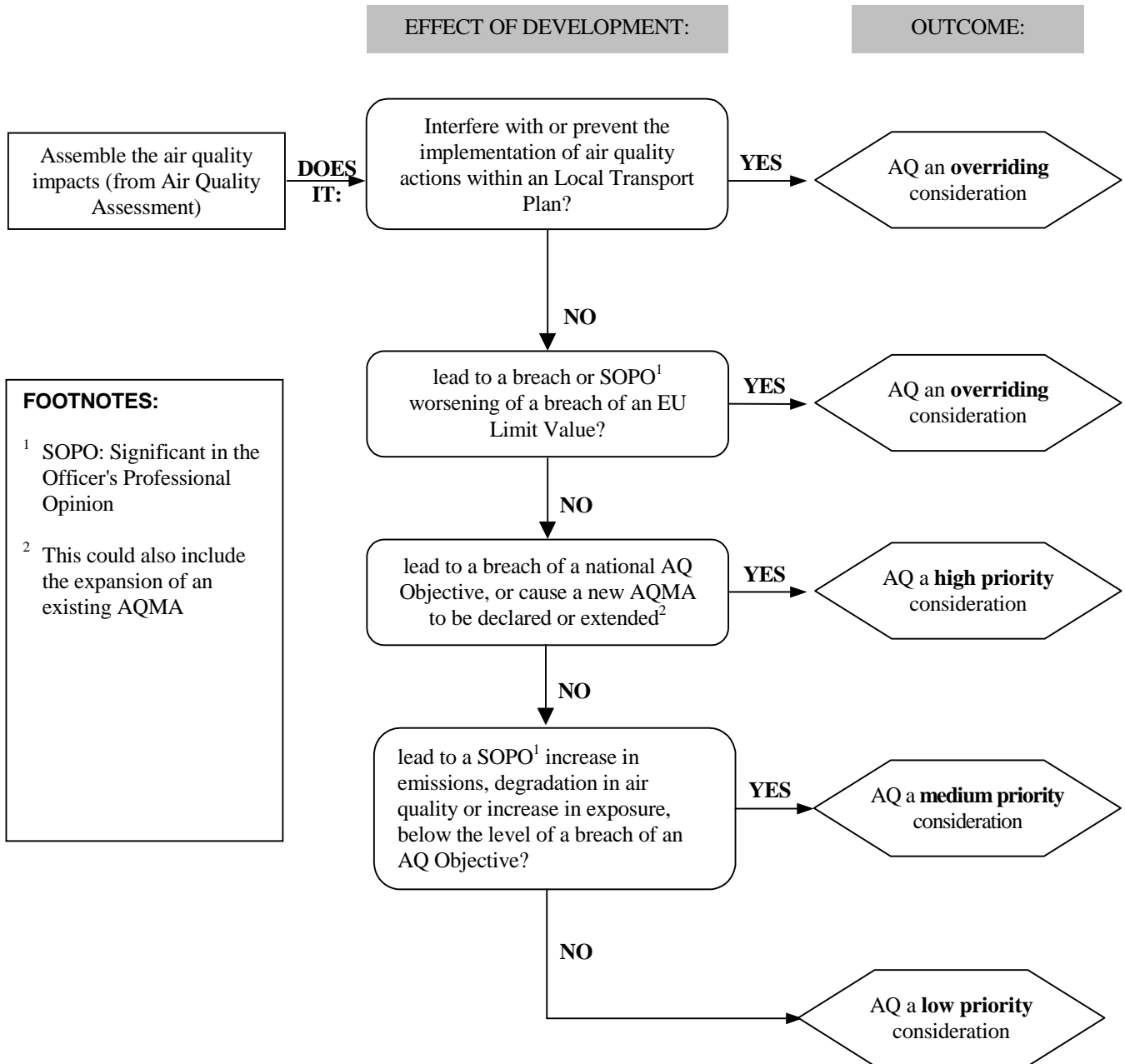


# Assessing the significance of air quality impacts

(based upon NSCA Guidance)



**FOOTNOTES:**

<sup>1</sup> SOPO: Significant in the Officer's Professional Opinion

<sup>2</sup> This could also include the expansion of an existing AQMA

**Note on SOPO**

The factors to be considered in deciding if the increase is significant include:

- Relative size of increase compared to pre-existing levels
- Extent to which the increase approaches or exceeds objectives
- Likelihood of other developments causing worsening or improvements in air quality
- Number of people who may be affected by the increase