

The Southampton Safe City Partnership's vision is to make ending Domestic and Sexual Abuse 'Everyone's Business'.

Every point of interaction with a victim is an opportunity for intervention. We want any victim or potential victim to be able to seek help and support within their daily lives, and increase reporting from victims, agencies, communities, business, family and friends. We want more victims to get the right specialist support and have the confidence to speak out, more support available for children and young people, more perpetrators to get support and increase opportunities to raise their awareness of the impact of their behaviours and change their behaviours, and we want to engage and empower communities to identify and signpost to services.

The Government definition states that Domestic and Sexual Abuse (DSA) refers to any incident of controlling, coercive, threatening behaviour, violence or abuse between those aged 16 or over who are, or have been intimate partners or family members regardless of gender or sexuality. The abuse can encompass, but is not limited to, psychological, physical, sexual, financial or emotional abuse. This strategy also includes sexual assault and abuse outside the domestic setting, in addition we will be working with those under 16 to address the harmful impact on children and young people.

DSA IN SOUTHAMPTON - KEY FACTS AND FIGURES 2015/16*:

- High levels of reported Domestic and Sexual Abuse at 77 cases per 10,000 population, which is over twice the national average (33 per 10,000 population).
- Domestic related violence accounted for 29.1% of total crime in Southampton
- 6,149 domestic violence incidents were reported to the Police in Southampton, an increase of 8% from 2014/15.
- 1,065 children and young people are identified as living in violent homes in the city where a parent is a victim of high risk DSA.
- 77% of Child Protection cases involve DSA.
- 1 in 5 DSA offenders committed a repeat offence in 2015/16.

- A high proportion of DSA offenders have alcohol or drugs linked to their offending behaviour – alcohol is a factor in around 18% of all domestic abuse offences in Southampton.
- The numbers of other types of 'hidden' abuse including coercive and controlling behaviour, female genital mutilation (FGM), forced marriages, so called honour based violence and others are very low, but we know that these types of crimes are underreported in the city and nationally.
- Further analysis can be found in the Safe City Strategic Needs Assessment at www.publichealth.southampton.gov.uk/

*2016/17 data will be published in the 2017 Strategic Needs Assessment

MAKING IT EVERYONE'S BUSINESS

Stopping domestic and sexual abuse must be a priority locally for all individuals and organisations. Specialist organisations such as Yellow Door, Woman's Aid, Homegroup, Hampton Trust and partners such as Health, Hampshire Constabulary, Probation Services and Southampton City Council will work together to deliver both existing and new approaches to make a positive difference, while meeting local and Government objectives and ensuring effective and consistent practice. This will mean partners and specialist agencies working proactively to ensure all

providers have robust workforce policies around DSA and ensuring their workforce are fully trained to identify and refer victims and perpetrators to the right services. Making it everyone's business is about everyone supporting a culture around DSA so that it is no longer acceptable in Southampton. Preventing domestic violence is everyone's business and creative collaboration to find new solutions is critical. True change will only happen when we are able to reach and influence people where they live, learn, work and play.

WHAT OUTCOMES DO WE WANT TO ACHIEVE?

Outcome	Why is this important?
Victim and survivor-centred approach	We want to make sure that services respond to the increasing numbers of domestic violence and abuse incidents in the city with services that meet the needs of victims and survivors in Southampton, so that all can get the help they need when they need it. Services will be based on a clear understanding of risks and needs to ensure victims can access effective support and achieve safety, resilience and independence.
Prevention and early intervention	Prevention and early intervention is about taking action early to identify risks and concerns, stop problems from getting worse, or avoid the problem altogether. We want to make sure that the right help and support is available so that fewer victims and their children reach crisis point, and the harm caused by DSA and violence against everyone is reduced. We want to respond to the high numbers of high risk domestic abuse cases in the city with this focus on prevention and early intervention, so that victims and perpetrators get the support they need before the case escalates to high risk.
Children and young people at the heart of our response	We want to respond to the high numbers of children and young people affected by DSA in the city with targeted support, education and joined up services. Children of any age can be affected by DSA, even before birth, and this has both short and long term impacts. Southampton has seen an increase in high risk DSA cases with children over the last 5 years. We want to keep children safe, promote healthy and safe relationships, and break potential cycles of abuse in our city.
Focus on perpetrators	We want to reduce the numbers of repeat offenders, and ensure that the right balance of justice and behaviour change support is in place. 1 in 5 DSA offenders in 2015/16 were repeat offenders. We want to increase effective perpetrator services to challenge and change behaviour through education and engagement with clear pathways to early identification and tracking to reduce reoffending rates in the city. We also want to increase arrest, charge and convictions for those who continue to offend. We want to expand workforce training to support prevention of abusive behaviours through skilling up front line staff across a range of settings. Also expand the identification & tracking to note early identification also serves as a prevention approach
Engaged, involved and empowered communities	Some groups of victims are less likely to speak out and seek help. This can be because of stigmatisation, culture, fear, or because they face barriers to accessing services. We want to engage and respond more effectively to the needs of diverse and marginalised groups, working with and through our communities, to promote reporting and address the barriers to accessing services. Engaging with and educating communities to tackle the stigma of DSA will help victims feel empowered to seek help, increase reporting of 'hidden' abuse and harmful practices, and ensure that communities and professionals have the skills to identify potential abuse and seek help.

The Southampton Against Domestic and Sexual Abuse Strategy is a multi-agency strategy that sets out our vision for tackling all forms of violence and abuse including:

- Domestic and Sexual Abuse (DSA)
 - Domestic Violence and Abuse (DVA)
 - Violence Against Women and Girls (VAWG)
 - Sexual Violence
 - Sexual Exploitation
 - Female Genital Mutilation (FGM)
 - Forced Marriage
 - So-called Honour Based Abuse
- For the purpose of this document, the term 'DSA' has been used to refer to Domestic and Sexual Abuse, but should be considered as a shorthand to relate to all forms of violence and abuse as listed above.
- (A full glossary of acronyms used in the strategy is available on the reverse)

Survivors' Voices in Southampton

- 2015 Focus groups with frontline workers and survivors of DSA showed that:
- Inter-generational DSA is high.
 - Help needs to be provided much earlier
 - Fathers are often excluded, and skills to work with fathers who are perpetrators is lacking.
 - There is a "missing link" to address the impact of DSA on children's behaviour and experience in school.
 - Cultural attitudes towards women and their role in society is a key factor.

"I didn't know anyone and it was a bit scary doing something new. Everyone was very nice and welcoming. I understand everything now and I don't have any questions anymore. I wouldn't change or improve anything" (child - DART)

"The service was brilliant, without their support I wouldn't be here today". (IDVA Client)

"The service provided to my family was beneficial and we continue to reflect on our sessions to build a father and son relationship which is working well. We were so lucky to have this" (Parent – Family Therapy, Yellow Door)

"Why can't there be more things like this around for us?" (Young Dads Group - The Hampton Trust)

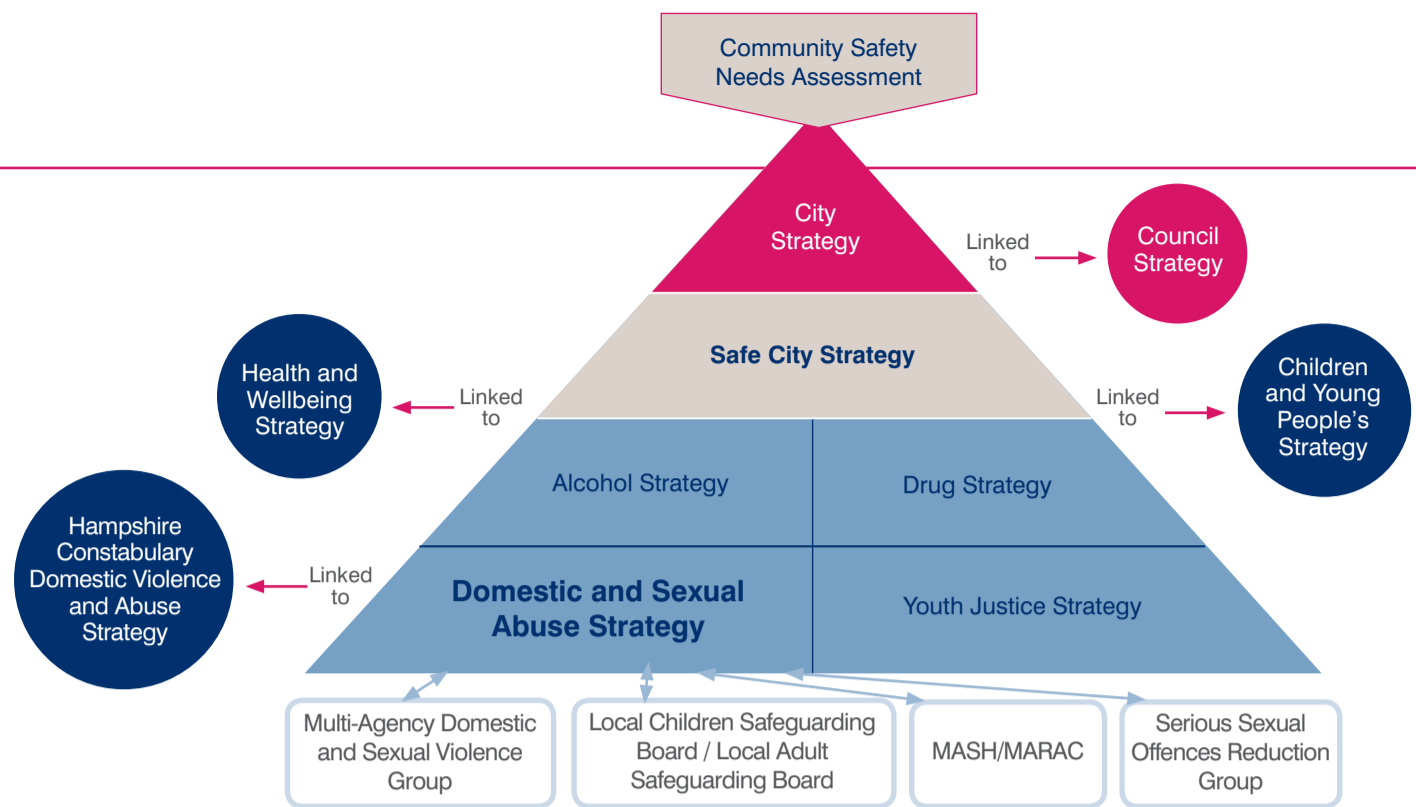
Since 2016 bimonthly focus groups for all have been held. Chaired by the Integrated commissioning Unit their comments are fed back to the DSA Strategic Group, the aim to influence both current and future provision across services.

The Southampton City Strategy 2015-25 sets out our vision for making Southampton a city of opportunity where everyone thrives. This includes the priority focusing on 'healthier and safer communities'.

The Southampton City Council Strategy 2016-2020 also focuses on ensuring 'people in Southampton live safe, healthy independent lives'.

The Safe City Strategy 2017-2020 sets out how partners in Southampton will achieve a safe city.

The Southampton Against Domestic and Sexual Abuse strategy sets out how partners in the city will work together to support the delivery of these goals.



WHAT ARE WE GOING TO DO?

Outcome	Actions	Lead	Measure
Victim and survivor-centred approach	Deliver the Home Office National Standards of Expectations by sustaining best practice, ensuring user involvement and publishing results.	DSA strategic group	<ul style="list-style-type: none"> % service users of domestic abuse feeling safer after intervention Difference in the levels of reported high risk from entry into service to exit (IDVA data) Numbers of high risk DA cases % of DSA arrests leading to charge (attrition rate)
	Improve our data, analysis and understanding of all aspects of DSA by: <ul style="list-style-type: none"> Developing a problem profile for DSA – especially harmful behaviour and cultural practices. Reviewing and targeting the support to the top 10% most recidivist / repeat victimisation and re-offending cases. Improving monitoring and understanding about the prevalence high-risk DSA in the city. 	DSA strategic group	
	Undertake force-wide improvements to increase the Formal Action Taken rates of DSA related crimes.	Hampshire Constabulary	
	Establish a dedicated rape and sexual assault investigation unit through Operation Amberstone, delivering a more joined up to investigations and victim support.	Hampshire Constabulary	
	MARAC/M4 review – use the review to continue to improve the delivery and impact of MASH/HRDA service.	DSA strategic group	
Prevention and early intervention	Shape PIPPA to support progress towards the “change that lasts model” For more information see www.womensaid.org.uk/our-approach-change-that-lasts/	DSA strategic group	<ul style="list-style-type: none"> % of below high risk incident reports to the Police Number of referrals from non Police sources to PIPPA Numbers of staffed trained by PIPPA Number of sectors engaged in training via PIPPA
	Increase the numbers of staff trained across partners in relevant services to enable them to identify victims of domestic abuse and signpost to appropriate support.	DSA strategic group	
	Increase the number of strategic partners adopting workforce operational policies in relation to DSA.	DSA strategic group	
Children and young people at the heart of our response	Actively seek funding from external sources to deliver targeted and evidence based support to those aged 0-10 year olds exposed to DSA, alongside exploring longer term provision	DSA strategic group	<ul style="list-style-type: none"> Number of children and young people living in high risk DSA households % child protection plans with DSA as a factor Numbers accessing STAR project
	Sustain the current provision around healthy relationships (STAR Project), in all secondary educational settings to support more vulnerable young people.	DSA strategic group	
	Expand links within “Families Matter” and wider Prevention and Early Help services to support a wider range of services and families.	DSA strategic group	
Focus on perpetrators	Focus on perpetrator interventions that support behaviour change by <ul style="list-style-type: none"> Increasing interventions Identification and tracking Colocation to aid improved workforce awareness 	DSA strategic group	<ul style="list-style-type: none"> Number of arrests relating to DV and sexual violence Number of DVPN/DVPO issued Numbers attending CARA
	Review the effectiveness of commissioned services for perpetrators.	DSA strategic group	
	Improve identification and referrals from substance misuse and mental health services into the DAPP perpetrator service.	DSA strategic group	
Engaged, involved and empowered communities	Increase current levels of engagement with diverse and marginalised communities, to raise their awareness and understanding of all forms of DSA, via dedicated resource in commissioned services.	Yellow Door	<ul style="list-style-type: none"> Numbers of service users from protected strands Number of reports of FGM, Honour Based Abuse and Forced Marriage
	Strengthen (PIPPA) training for professionals around diversity, and increase knowledge and specialisms to reach those victims with diverse and/or complex needs.	PIPPA service	
	Monitor and improve reporting on the number of, and support provided to, those experiencing FGM, so called Honour Based Abuse or Forced Marriage.	DSA strategic group	
	Maximise the impact of White Ribbon day to engage with more men and boys.	All partners	

GLOSSARY OF ACRONYMS

CARA	Conditional Cautioning and Relationship Abuse service
DAPP	Domestic Abuse Perpetrator and Prevention Services
DART	Service – Domestic Abuse, Recovering Together
DSA	Domestic and Sexual Abuse

DVPN	Domestic Violence Protection Notice
DVPO	Domestic Violence Protection Order
FGM	Female Genital Mutilation
HRDA	High Risk Domestic Abuse
ISVA	Independent Sexual Violence Advisors
LSAB	Local Safeguarding Adult Board
LSCB	Local Safeguarding Children Board
MARAC	Multi Agency Risk Assessment Conference
MASH	Multi Agency Safeguarding Hub

MASH/M4	M4 is the Multi agency MARAC and MASH approach
STAR	project – a Yellow Door education and outreach initiative working through schools to teach children and young people about healthy relationships.
PIPPA	Prevention, Intervention and Public Protection Alliance