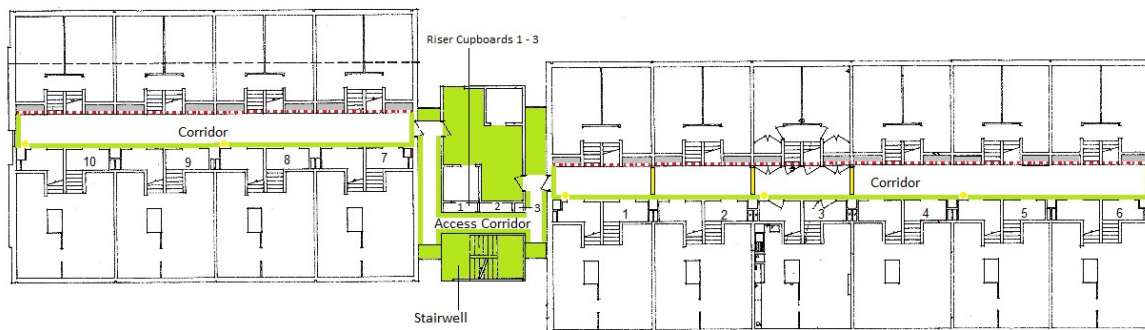


ALBION TOWERS - FLOOR 1  
 DECEMBER 2017  
 NOT TO SCALE



This plan may not illustrate all incidents of asbestos associated with this property. This plan must be read in conjunction with the asbestos property report provided by Southampton City Council. Produced by SCC Regulatory Services.

KEY	
<span style="display: inline-block; width: 15px; height: 10px; background-color: yellow; border: 1px solid black;"></span>	Asbestos cement
<span style="display: inline-block; width: 15px; height: 10px; background-color: lightgreen; border: 1px solid black;"></span>	Artex
<span style="display: inline-block; width: 15px; height: 10px; background-color: red; border: 1px solid black;"></span>	Asbestos insulation board
<span style="display: inline-block; width: 15px; height: 10px; background-color: gray; border: 1px solid black;"></span>	Areas of "no access"
<span style="display: inline-block; width: 15px; height: 10px; border-top: 1px dashed red; border-bottom: 1px dashed red;"></span>	Presumed AIB above fire exit/shed doors