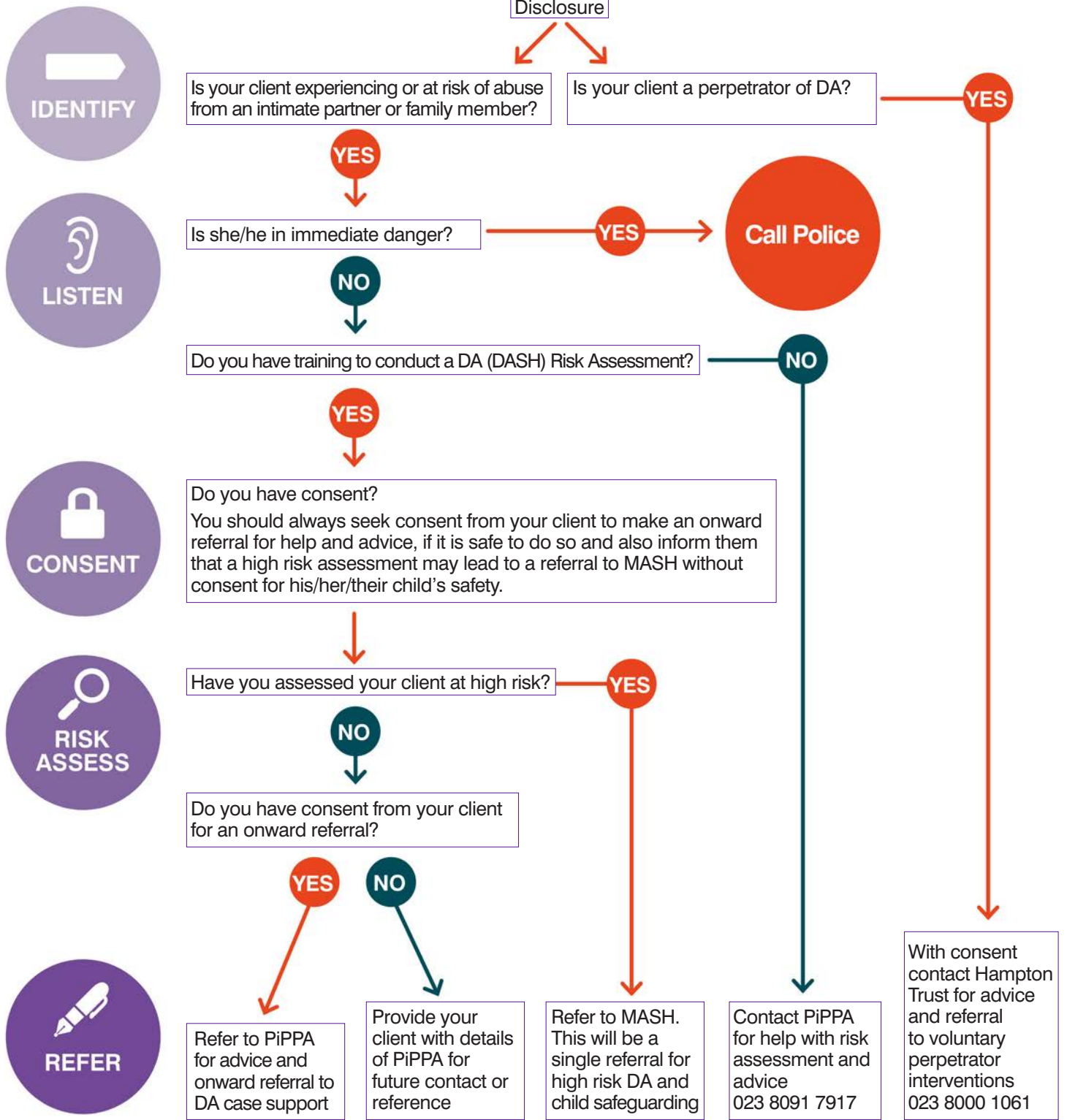


Guidance for professionals

Domestic Abuse (DA) pathways Southampton



Safeguarding Children, and Adults with additional care needs (Vulnerable adults):

For high risk DA – a single referral to MASH will address DA and child safeguarding concerns. mash@southampton.gov.uk
www.southampton.gov.uk/health-social-care/domestic-abuse/information-for-professionals/

For below high risk DA – PiPPA will advise on DA concerns. You also need to report safeguarding concern to Adult Social Care (adults) adultsocialcareconnect@southampton.gov.uk and MASH (children) as above.
www.southampton.gov.uk/health-social-care/adults/help-for-vulnerable-adults/