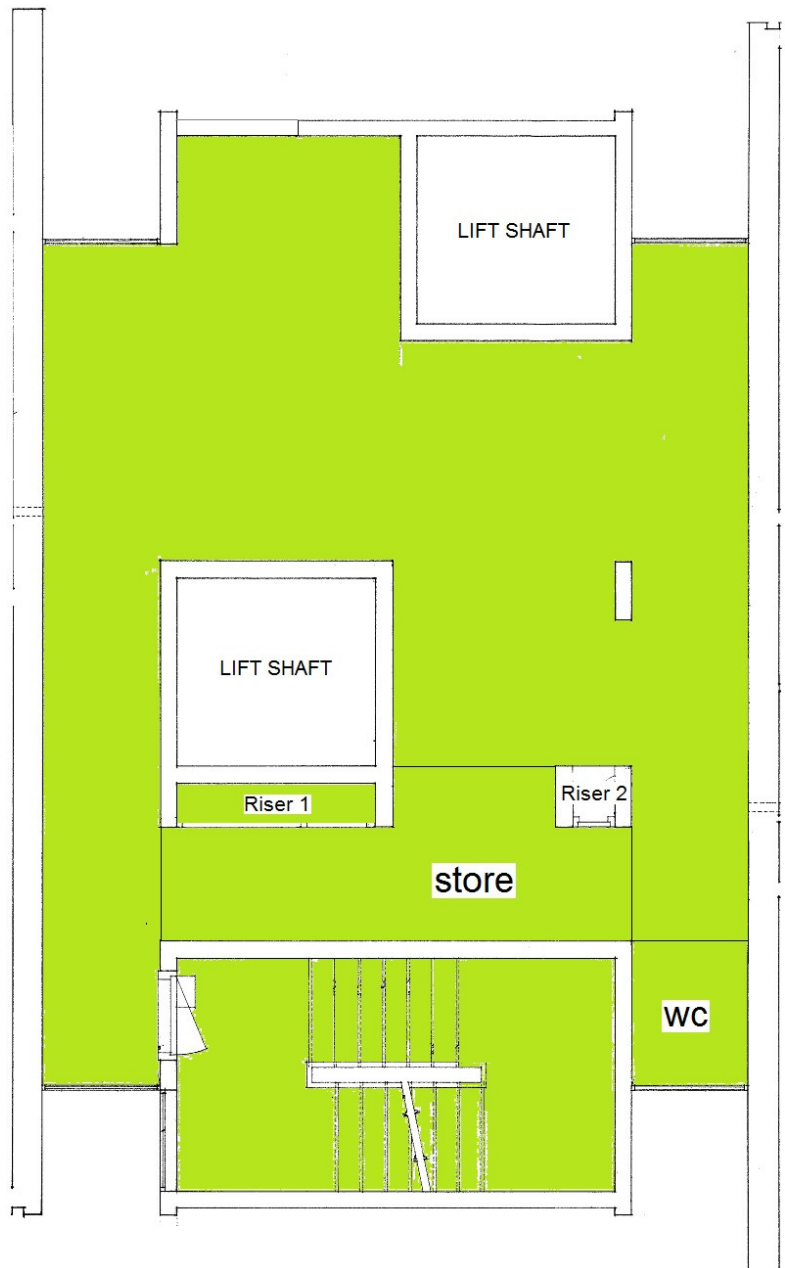



ALBION TOWERS - FLOOR 4 COMMUNITY ROOM
DECEMBER 2017



Key

 Artex

This plan may not illustrate all incidents of asbestos or potential asbestos associated with this property.

This plan must be read in conjunction with the asbestos property report provided by Southampton City Council's Asbestos Database.

Produced by Regulatory Services - Southampton City Council.