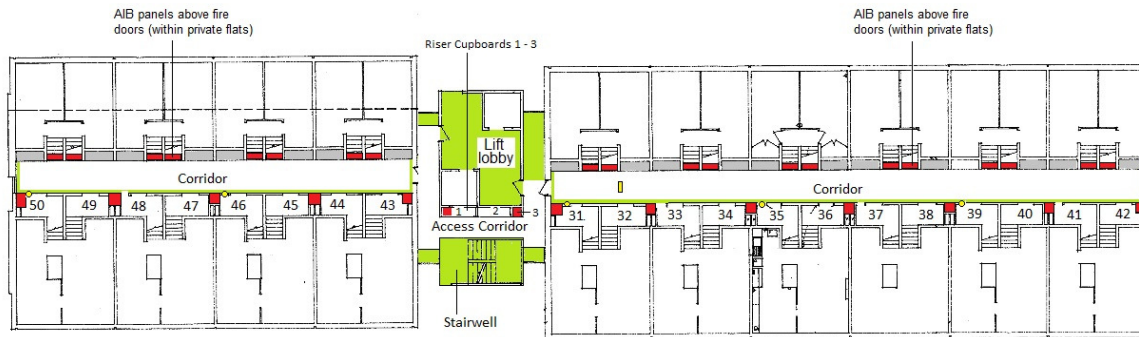


**SHIRLEY TOWERS - FLOOR 5**  
JULY 2016



Key	
<span style="display:inline-block; width:15px; height:10px; background-color:red; border:1px solid black;"></span>	Asbestos insulation board
<span style="display:inline-block; width:15px; height:10px; background-color:yellow; border:1px solid black;"></span>	Asbestos cement
<span style="display:inline-block; width:15px; height:10px; background-color:lightgreen; border:1px solid black;"></span>	Artex
<span style="display:inline-block; width:15px; height:10px; background-color:grey; border:1px solid black;"></span>	Areas of "No Access"

This plan may not illustrate all incidents of asbestos or potential asbestos associated with this property.

This plan must be read in conjunction with the asbestos property report provided by Southampton City Council's Asbestos Database.

Produced by Southampton City Council - Scientific Services.