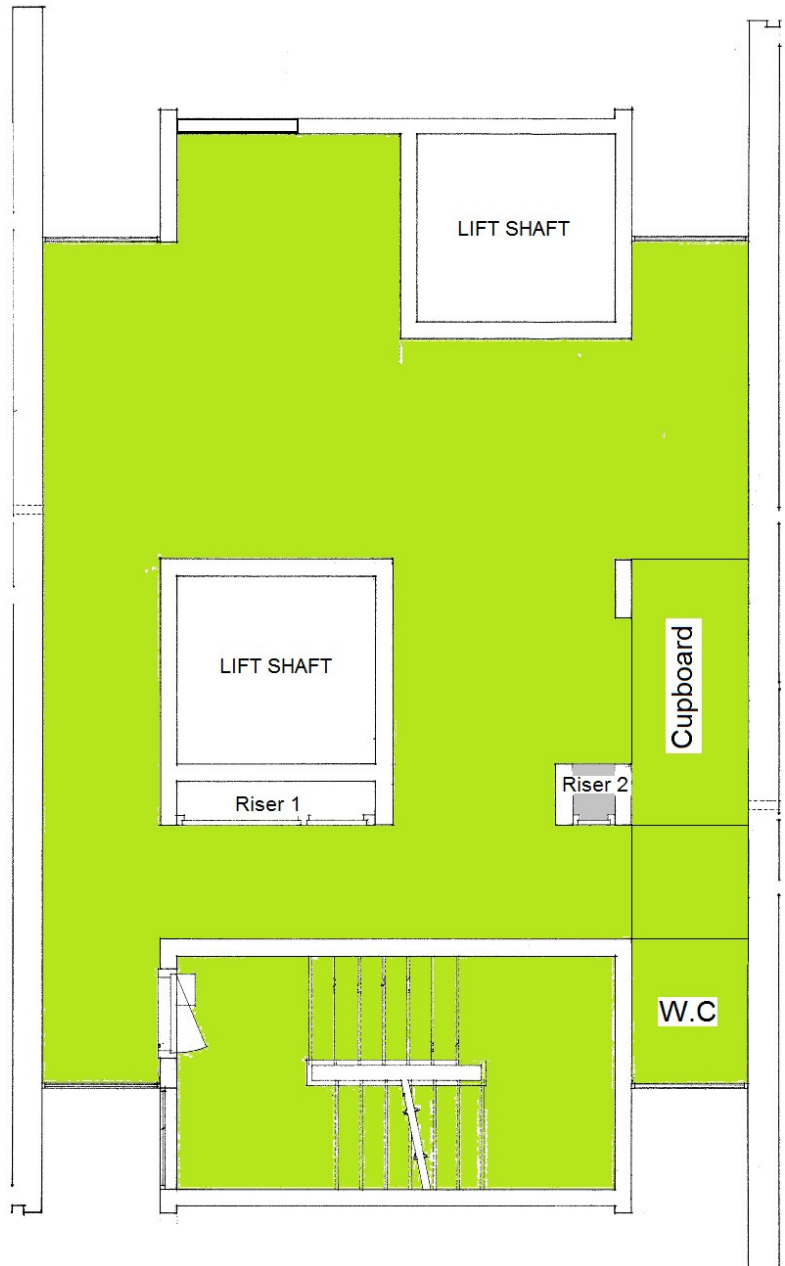


**SHIRLEY TOWERS - FLOOR 6 COMMUNITY ROOM**  
**MARCH 2016**



| Key |                           |
|-----|---------------------------|
|     | Asbestos insulation board |
|     | Area of "No access"       |
|     | Artex                     |

This plan may not illustrate all incidents of asbestos or potential asbestos associated with this property.

This plan must be read in conjunction with the asbestos property report provided by Southampton City Council's Asbestos Database.

Produced by Scientific Services - Southampton City Council.