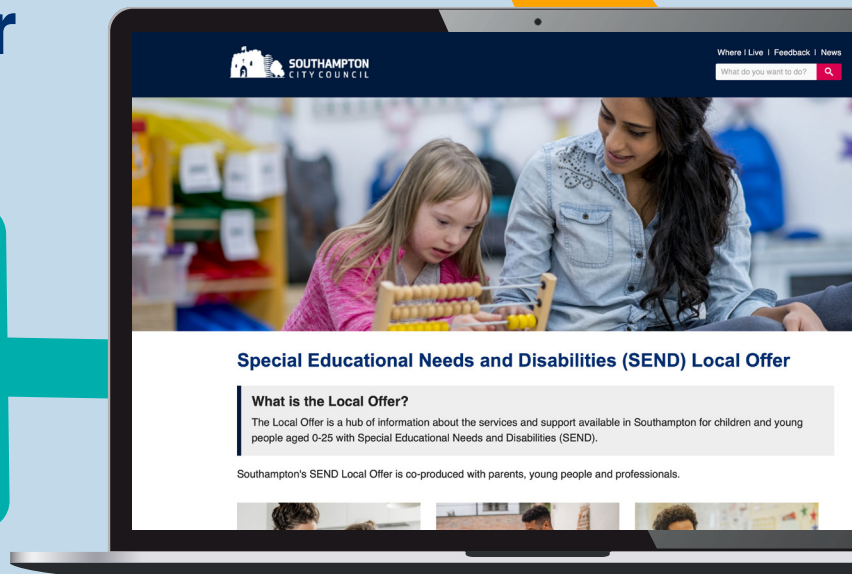
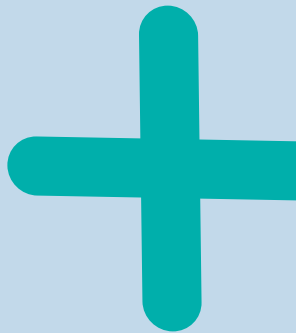


# Newsletter

## Special Educational Needs and Disabilities (SEND) Local Offer

Summer 2023



### Welcome

The Local Offer is a hub of information (showcased within a website) about the services and support available in Southampton for children and young people aged 0 - 25 with Special Educational Needs and Disabilities (SEND). Southampton's SEND Local Offer is co-produced with parents, young people and professionals.

It's nearly the end of the school term and the school holidays will be here! Keep reading for updates and information about activities going on over the next six weeks. Have a wonderful Summer!

### Our new website is live

The new website is very much a work in progress and we need your help to tell us what you think. Could you spare some time to click the button below, have a look and share your feedback with us please?

[View website](#)

View Facebook page

[facebook.com/southamptonSENDlocaloffer](https://facebook.com/southamptonSENDlocaloffer)

Please forward feedback to:

[clairepritchard@roseroad.org.uk](mailto:clairepritchard@roseroad.org.uk)

1 / 10 ▶



Special Educational  
Needs and Disability  
Making a difference



# Whats on

## Southampton Children's Play Association

Our Playschemes operate Monday to Friday, with morning and afternoon sessions. While parents, carers and guardians are not required to attend schemes, we do encourage them to come along and join the fun!

Our schemes always offer a variety of different activities and operate from a number of locations, such as:

- Townhill
- Shirley
- Sholing
- Woolston
- Weston
- Millbrook
- Thornhill
- Harefield



Join us for  
**PLAY DAY 2023**  
On Friday 28 July  
Between 10am and 2pm  
**Hoglands Park, Southampton**

We bring all children and families from Southampton together so all communities can take part in a wide range of diverse Play Activities.

For more information, click here  
[scpaplay.org.uk/play-day](https://scpaplay.org.uk/play-day)



Southampton  
Children's Play  
Association

The Southampton Children's Play Association (SCPA) advertises on Facebook and all Southampton schools have received an online Summer Playscheme timetable via email to share with their children and families.

To find out more email [office@scpaplay.org.uk](mailto:office@scpaplay.org.uk) or visit [scpaplay.org.uk/play-schemes](https://scpaplay.org.uk/play-schemes).

Facebook page  
[facebook.com/SCPAPLAY](https://facebook.com/SCPAPLAY)

The SCPA Playday is nearly here!!!  
Everyone welcome!

SCPA has over 30 organisations coming together to provide this year's Annual Playday for you! All we ask is a 50p donation per family on the day to help us pay and plan for next year's play day - thank you!

2 / 10 ►



Special Educational  
Needs and Disability  
Making a difference



# Whats on

## Southampton Cultural Services

Keep the kid's busy this Summer with six weeks of art activities at SeaCity Museum, Southampton City Art Gallery and Tudor House and Gardens starting on 24 July.

Find all our activities across all three cultural venues here:

[wegottickets.com/southamptonCulture](http://wegottickets.com/southamptonCulture)





# Whats on

## Testlands Summer Holiday Club

This Summer we are able to offer paid and funded spaces with Southampton Holiday Activities & Food Programme & Hampshire County Council Hampshire HAF at the following locations:

- Oasis Academy Lordshill
- Oakwood Primary
- Bevois Town Primary
- St Denys Primary
- Tanners Brook Primary



**SOUTHAMPTON HAF**  
Holiday Activities & Food

# HOLIDAY ACTIVITIES

**FREE\***  
\*Children receiving free eligible school meals.

To book visit [www.southampton.gov.uk/haf](http://www.southampton.gov.uk/haf) @hafsouthampton

**Child Friendly SOUTHAMPTON**

Department for Education

SOUTHAMPTON CITY COUNCIL

- Hamble Sports Complex with ID PE & Sport
- St John the Baptist Catholic Primary

Child care vouchers are accepted. A 20% sibling discount and reductions for key workers are also available.

To book please visit: [testlands.com/holidayclub](http://testlands.com/holidayclub).

### PLEASE NOTE:

Testlands Holiday Club runs for the first 5 weeks of the Summer Holiday only.

HAF funded spaces run Monday - Thursday for the first 4 weeks of the Summer Holiday.

4 / 10 ►



**Special Educational Needs and Disability**  
Making a difference



# Whats on

## Southampton Mencap Summer Playscheme

We will be running fun and safe playschemes throughout the summer holidays and would love to see you there! There will be a variety of play opportunities including cooking, sensory play, arts and crafts, sports and more. These will take place at our Mencap Centre in Portswood.

Your child is eligible to join our activities if:

- They are between the ages of 6-17 years old
- They live in Southampton
- They have a Max Card Plus and/or are open to Jigsaw

Times: 9.30am-4pm

**Dates:** Week Commencing 24 July to w/c 29 August inclusive

**Days:** Monday-Thursday each week except for w/c 29th August where schemes will only run on Tuesday 29 and Wednesday 30 August

**Booking Restrictions:** Children will initially be offered two days a week though this may change depending on demand.

**Price:** £17.50 per day



**Please note:** Transport and lunches are not provided. A free taster session lasting approximately 1-2 hours and an application meeting lasting approximately 30 minutes will be required before the child's first session. Children cannot be joined by carers, outside 1:1 support, or siblings (unless meeting the criteria and registered separately) during sessions except for the Taster session for which a carer will be expected to stay

If you are interested in booking your child onto this activity, please ring our Activities Manager Elly ASAP on 023 8058 4088 to discuss in further detail.

5 / 10 ►



Special Educational  
Needs and Disability  
Making a difference



# The Buzz Network:

The logo for 'maxcard' is displayed in white lowercase letters on a yellow trapezoidal background.

## What is the MAX card?

The MAX Card and MAX Card Plus have replaced the Buzz Passport. The MAX Card has been issued to all children and young people registered with The Buzz Network. It gives discounts or benefits to the holder and one other person at a range of venues and organisations within Southampton and further afield.

The card can only be used by the registered child and their parent/carer so please do not lend to anyone else.

The MAX Card can be used at a large number of venues within Southampton and beyond. The list includes:

- Southampton Go Ape! Itchen Valley Country Park
- Partyman World of Play
- Longdown Dairy Farm
- New Forest Wildlife Park
- SeaCity Museum

Find out more via the [MAX Card website](#) about participating venues.

## Who can access the card?

The MAX Card is available to any child or young person registered on The Buzz Network. If you are not a member of the Buzz Network and would like further information or to join then please [click here](#).

Those within the medium level of support (in receipt of DLA or PIP and evidenced to the Short Breaks Officer) will receive a MAX Card Plus. This will give additional benefits such as access to specialist playschemes.

MAX Cards are issued based on The Buzz Network eligibility criteria. These will be reviewed every 2 years, however it is your responsibility to let us know of any changes to circumstances within this time.

You are eligible to join The Buzz Network if:

- Your child or young person is under 19
- You live at a Southampton address
- Your child or young person has SEND

Visit [The Buzz Network information page](#) to find out more.

6 / 10 ►



**Special Educational  
Needs and Disability**  
Making a difference



# Other organisations and activities



## Re:Minds

Re:Minds is a Southampton based organisation supporting families whose children/young people have Autism, ADHD or other neurodiverse needs and/or mental health needs - with or without a diagnosis. Our aim is to allow people whose children face similar issues to meet up in an informal setting to share knowledge and talk about any challenges our families are facing. They don't claim to be experts, just other families who understand what it can feel like to be on this journey. They are the primary link between families and Southampton Specialist CAMHS and offer speakers on a range of topics.

[reminds.org.uk](http://reminds.org.uk)



## Rose Road Association

The Rose Road Association Playscheme is available over Summer Holidays but does get booked up quickly!

The dates for the summer playscheme are Monday 31 July to Friday 25 August. If you would like more information, please email:

[activities@roseroad.org.uk](mailto:activities@roseroad.org.uk)

7 / 10 ►



Special Educational  
Needs and Disability  
Making a difference





# Other organisations and activities

## Active Nation

Commissioned by Southampton City Council, our short breaks provide children and young people with disabilities, or additional needs, an opportunity to spend time away from their parents, engage in fun activities and enjoy time with their friends. They offer parents/carers a break from their caring responsibilities and time to spend with other family members and to catch-up on other daily tasks.

View the [SEND timetable](#), or for more information or any queries, please contact:

[communities@activenation.org.uk](mailto:communities@activenation.org.uk)

# ACTIVE NATION



**INFLATAZONE**  
**SUMMER HOLIDAYS**  
**SEN SESSIONS**

★ 25 JULY - 27 JULY  
★ 1 AUGUST - 3 AUGUST

BOUNCY CASTLE, DIDDY CARS, CASTLE SLIDES, DISCO CASTLE,  
SOFT PLAY AREA & MORE!

★ 20 CHILDREN MAXIMUM  
★ LOW/NO MUSIC

TO BOOK VISIT [WWW.INFLATAZONE.CO.UK](http://WWW.INFLATAZONE.CO.UK) OR SCAN THE QR CODE

TESTLANDS WELLBEING HUB, GREEN LANE, SO16 9FQ



Facebook page

[facebook.com/Inflatazone](https://facebook.com/Inflatazone)

8 / 10 ►



Special Educational  
Needs and Disability  
Making a difference





# Southampton Parent Carer Forum

The Forum is a voluntary group of parents and carers who have children with special educational needs or disabilities (SEND) aged 0-25. It welcomes and supports anyone living in Southampton who has a child with SEND (diagnosed or not) to experience a better quality of life.

It's vision is for a community where the daily challenges faced by Parent Carers are recognised and understood, and there is a shared commitment to overcome them.

For updates on activities and events visit Facebook [Facebook page](#)

For regular news and updates join our mailing list. [Forum mailing list](#)



## Food Bank: Referrals Available

The Forum is approved to issue food bank vouchers. If you are struggling and need support contact: [chair@sotonpcf.org.uk](mailto:chair@sotonpcf.org.uk).

You will be sent a link to complete a form. A voucher will then be emailed to you.

Please don't struggle.

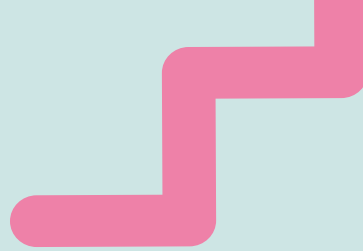
9 / 10 ►



Special Educational  
Needs and Disability  
Making a difference



# Consultation



## Consultation on the proposed expansions of Great Oaks School and Vermont School

Southampton City Council is consulting on proposals to expand and relocate Vermont School and the expansion of Great Oaks School at two locations (current site and a new neighbouring site)

07/06/2023

The council is committed to expanding successful Special Educational Needs provisions where possible to meet demand. Developing places within the city will mean that children and young people are able to have their needs accommodated locally which will also reduce the need to rely on high-cost and out-of-city placements. For any school to increase their capacity by 10% or more it must follow a procedure set out by the Department for Education.

There is an urgent need to increase the number of special school places in Southampton, due to an increase in need and demand.

Vermont School is currently a 50-place Special School for primary aged pupils with Social, Emotional, Mental Health (SEMH) needs. The Council is planning to increase the capacity of the school to accommodate 76 pupils. It is proposed that the current St Monica Infant School site in Sholing, which is due to be vacated this summer, will be refurbished and extended with a new two-storey building and Vermont school will relocate to this site.

Great Oaks School is currently a 325-place Special School for 11-18-year-olds with complex needs. The Council is proposing to increase the capacity of the school to accommodate 150 additional pupil places onto a neighbouring site of Vermont School.

It is also proposed to increase the facilities on one of Great Oaks' existing sites at Green Lane, Redbridge. This will provide an additional 27 spaces. It is expected that there will be a final overall capacity of 500 places at Great Oaks School.

Robert Henderson, Executive Director of Wellbeing (Children & Learning) said: "Expanding the number of Special Education Needs and Disability (SEND) places will make a huge difference to children and young people across the city. We want to ensure that our children and young people with SEND have their needs met in local, inclusive and high-quality educational.

We are inviting residents to review the plans and offer their feedback in a public consultation. It's a great opportunity for us to hear what residents think and feel about the project and I encourage families, neighbours and communities to come along to one of the events, visit the website and have their say".

The consultation is running from Monday 5 June 2023 to Monday 31 July 2023. Details about the consultations, drop-in sessions, FAQs and next steps can be found here:

[Consultation page](#)

10 / 10 ►



Special Educational  
Needs and Disability  
Making a difference

