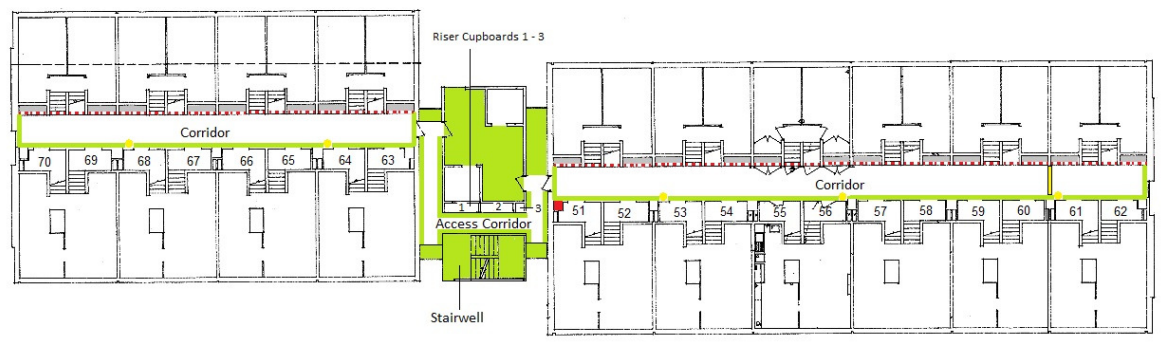


**ALBION TOWERS - FLOOR 7**  
 DECEMBER 2017 NOT TO SCALE



This plan may not illustrate all incidents of asbestos associated with this property. This plan must be read in conjunction with the asbestos property report provided by Southampton City Council. Produced by SCC Regulatory Services.

KEY	
	Asbestos cement
	Artex
	Asbestos insulation board
	Areas of "no access"
	Presumed AIB above fire exit/shed doors