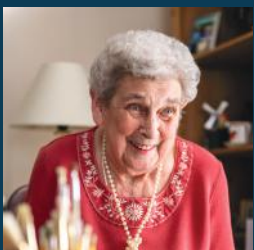


Independent living for people with care and support needs



Potters Court, Wimpson Lane,
Maybush, Southampton

A housing with care scheme



Freedom, flexibility and support

Potters Court is a brand new housing with care (also known as 'extra care') complex located in Maybush, Southampton.



Owned and managed by Southampton City Council, the complex will provide:

- 83 fully self-contained flats (a mixture of one and two bedroom homes)
- Communal facilities where residents from the complex and the wider community can meet and enjoy events and activities
- The privacy and independence of your own flat with the reassurance of onsite support and 24-hour care

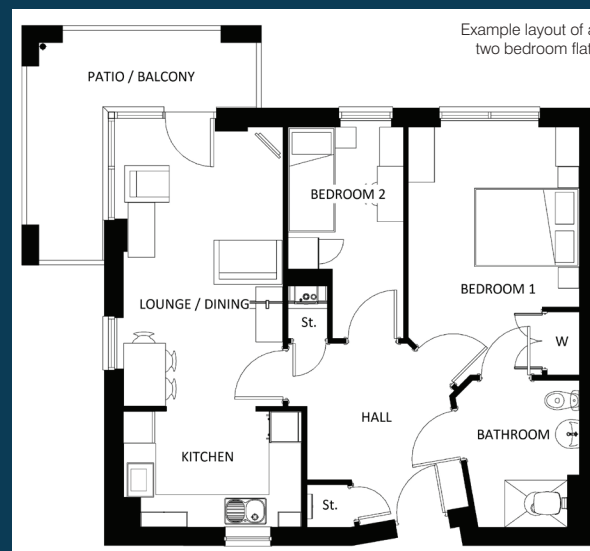
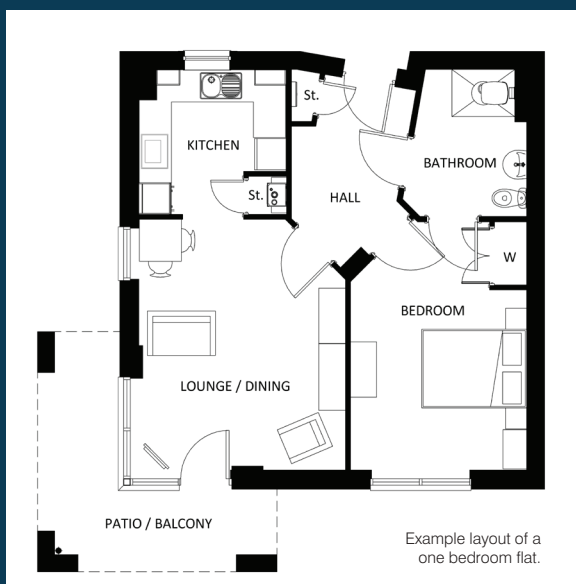
Potters Court is designed for people with quieter lifestyles who are approaching their later years, or those who need the type of support associated with later life.

Flats

Generously sized rooms offer you space to enjoy life, entertain family and relax with friends.

Each flat has:

- Open plan living room
- Stylish kitchen
- Modern wet room
- Full wheelchair accessibility
- Outside balcony or patio area
- Door entry system – you know who your guests are before you let them in
- Telecare system – help is only a call away at any time, day or night
- Other devices like fall detectors and door access monitors are also available should you require extra reassurance
- Energy-efficient heating



Communal facilities

Potters Court will have a range of communal facilities, including:

- Restaurant
- Health and wellbeing suite
- Communal lounges
- Laundry facilities
- IT facilities
- Wi-fi in communal areas
- Private communal gardens
- Off-road parking

Many of the facilities at Potters Court will be open to members of the local, older community, with the aim of making the scheme a vibrant hub for the local neighbourhood.

Residents, visitors and volunteers will have the opportunity to enjoy and share in social and active hobbies and events. Get involved as little or as much as you like.



The onsite restaurant offers residents the choice to have a meal with family and friends and will also be available for visitors and the local community nearby.

Care and support

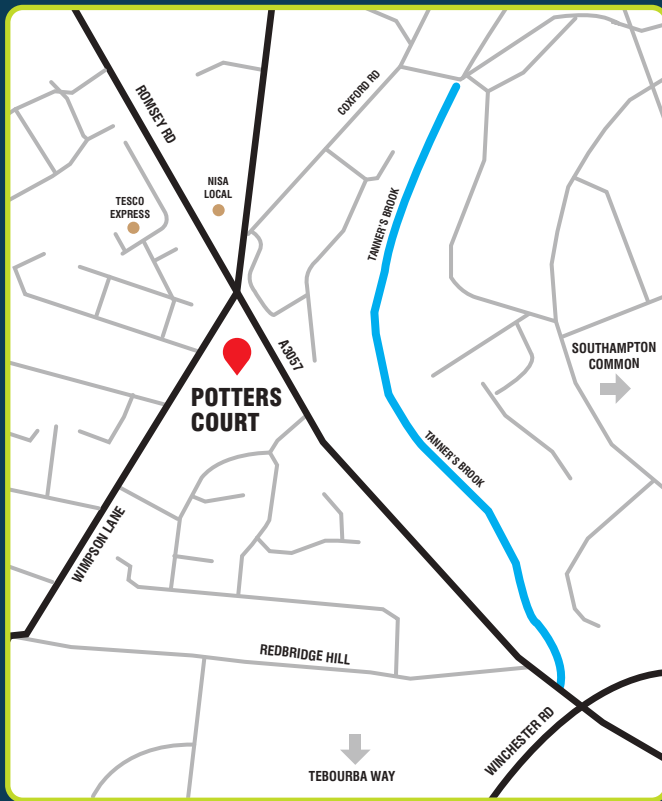
Housing with care supports you to remain living independently in your own flat, even though you may need help and support with everyday living skills. At Potters Court, 24-hour care services will be on site.

Care and support is tailored to how much or how little you require. Depending on individual circumstances, residents with significant care needs, including dementia, can be supported.

Members of staff will be on site to provide the following:

- Help in emergencies (such as falls or unexpected illness)
- Wellbeing calls to check you are okay
- Advice on health and benefits
- Help to plan further care and support as your needs change
- Help to organise social activities – these could include exercise classes, IT classes, art classes, film nights etc.

Potters Court, Maybush, Southampton



© Crown copyright 2020 Ordnance Survey, Southampton City Council 100019679

Location and amenities

Potters Court is located in Maybush, on the corner of Wimpson Lane and Romsey Road.

There are bus stops a short distance away on both Wimpson Lane and Romsey Road.

Shirley High Street is less than a mile away, offering a good selection of well-known shops, supermarkets, pubs, cafes and leisure facilities.

Southampton city centre is less than three miles away. The city centre provides excellent transport links via M27 and M3, Southampton Central railway station and Southampton Coach Station.

Who can apply

Potters Court is designed for older adults, either single people or couples, who have a housing need and assessed care and support needs.



Images in this brochure are for illustrative purposes only. Potters Court is under development and actual interior scenes will differ.



How to apply

To apply to live at Potters Court you must submit a Housing Register application.

For more details about the application process and what life will be like at Potters Court please visit southampton.gov.uk/newhomes.

Alternatively please phone or email us.

Tel: **023 8083 3835**

Email: housing.support@southampton.gov.uk

 [southamptonhousing](https://www.facebook.com/southamptonhousing)

 [@sotonhousing](https://twitter.com/sotonhousing)